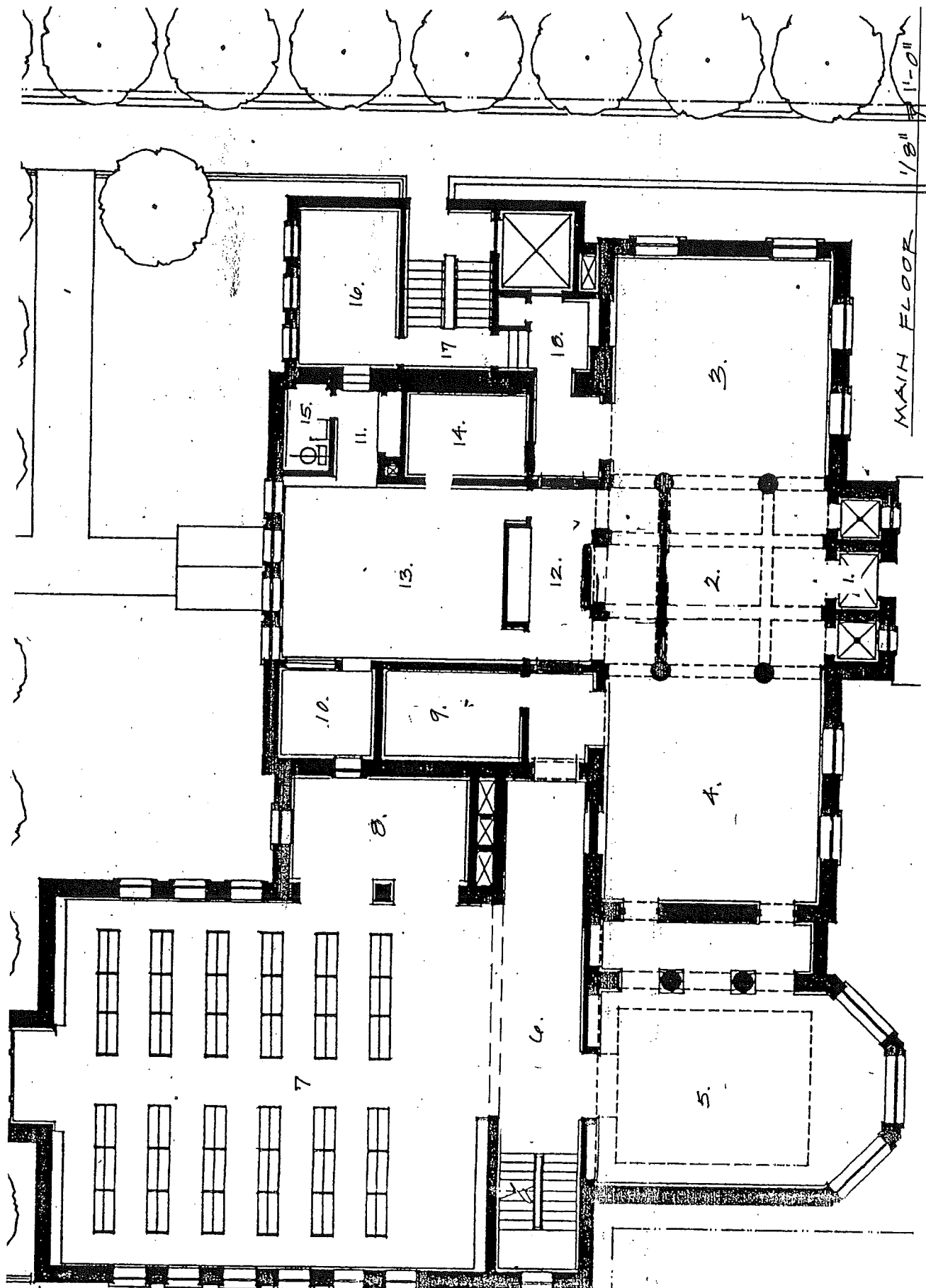
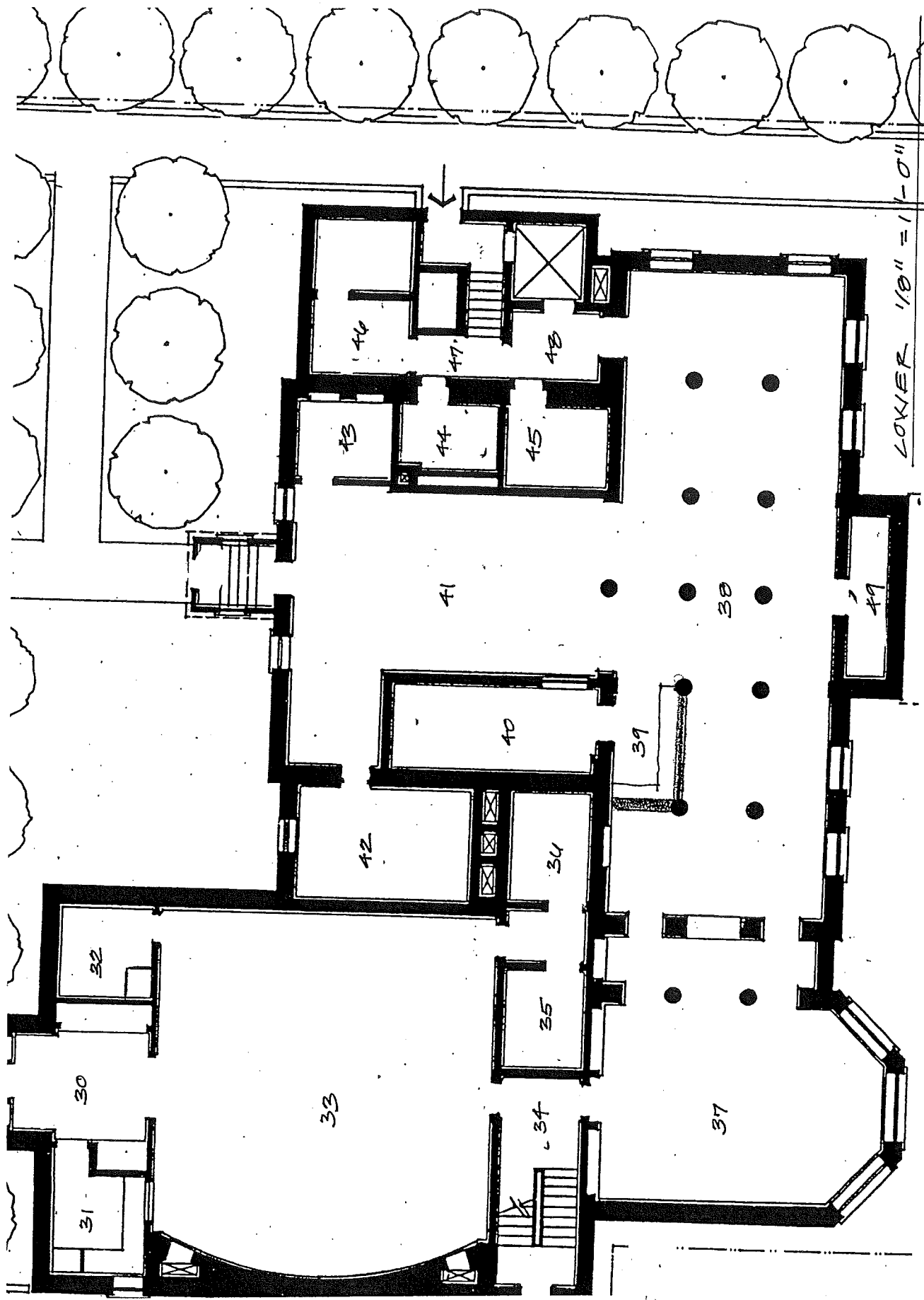


THIRD 1/8" = 1'-0"

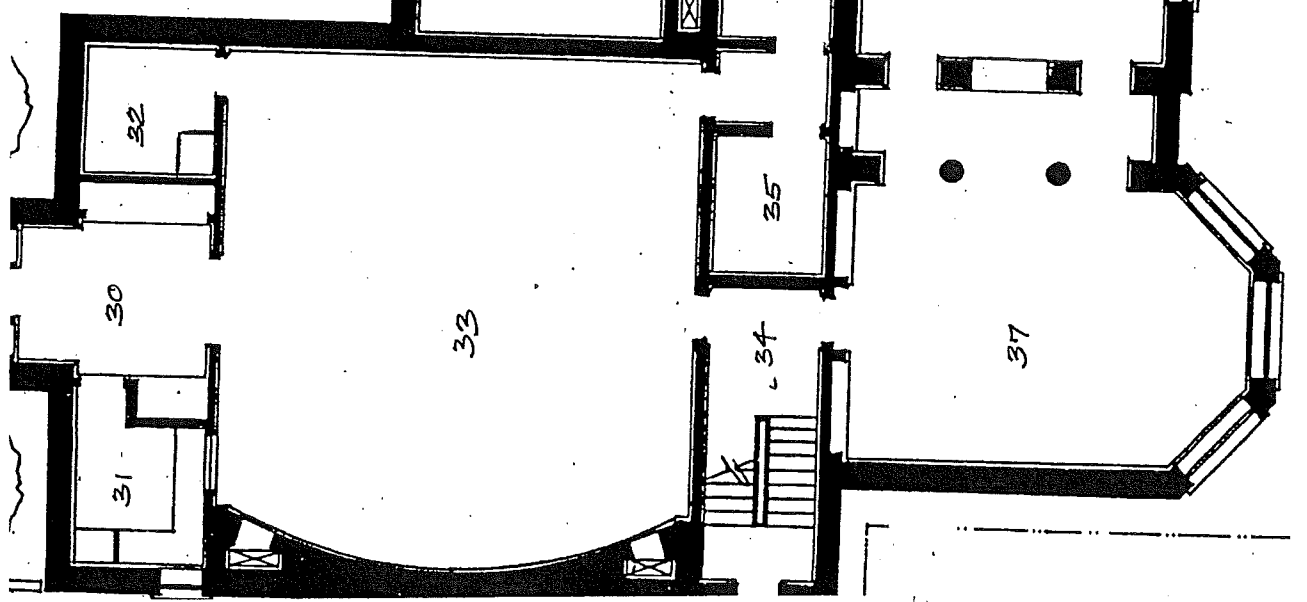
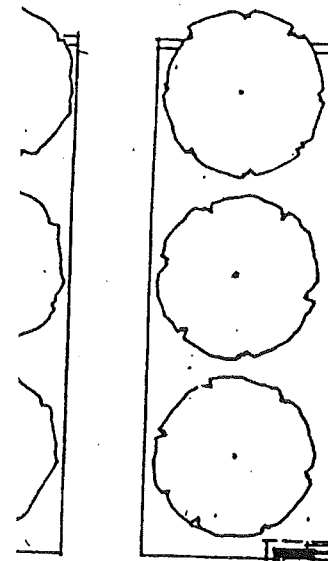
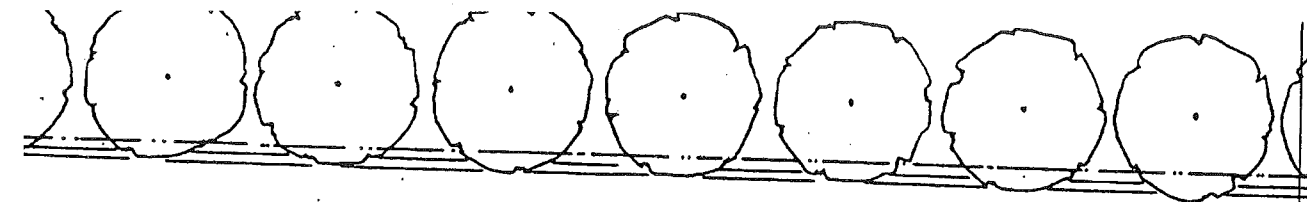


MAIN FLOOR

11-011



LOWER 1/8" = 1'-0"



2007 Isley Library Space Utilization and Needs Summary

Main Floor	Description of Space	Area Existing		Public Seats	Study/Seating	Entry/ Shelving	Use	Furniture	Comments
		Area Existing	Area Existing						

July 1, 2007

1	North Entrance Vestibule	24 sf	0	0	0	0	Street Entrance	None	Door is heavy, Not accessible due to steps
2	Center Lobby	224 sf	2	2	8	8	Main Lobby, Circulation Desk	Circulation Desk, 2 side desks, newspaper stand, book baskets	Books are on radiator shelves; Good browsing room
3	Main Room West	400 sf	4	0	120	120	Current Adult Non-fiction, Magazines	4 chairs, perimeter bookshelves, 2 magazine stands, 3 side tables	Books are on radiator shelves; Good reception room
4	Main Room East	400 sf	5	0	127	127	Current Adult Non-fiction, Newspapers	5 chairs, 2 tables, 2 side tables, pen/marker bookshelves, newspaper stand	High ceiling, great natural light, good for events, reference desk blocks access to shelving and circulation
5	East Addition	456 sf	11	2	188	188	Reference, Reading Room	Large bookshelf, large reference desks, 2 upholstered chairs, 9 wood seats, 2 wood tables, 1 magnifying station, atlas, misc. bookcases	Would like the stair to be more visible so public would know where upstairs was.
6	West Stair Hallway	180 sf	3	0	0	0	Access Computers, Public Information	Copier, Copier Table, 3 computer stations, information table, bulletin board	Is this the best location for Collier Health; Would like more study tables
7	North Stacks	1,534 sf	8	0	1520	1520	Large Print, Non-fiction, Teen Books, Collier Health Collection	Metal-braced Shelving, couch, coffee table, wood table, 6 chairs, Collier computer station	Not the most efficient use of space; no privacy; group computer work isn't possible
8	North Stacks Alcove	170 sf	11	0	0	0	11 Public Computer Stations	11 chairs, 11 computer tables	No windows; could be private meeting room
9	Magazine Storage	96 sf	1	0	0	0	Magazine Back Issue Public Access: 438 boxes	1 bench seat, metal shelving units, 438 boxes	25 lf of bookshelf
10	Director's Office	72 sf	0	1	1	1	Private Office	1 desk, 2 carts, 1 credenza, 1 bookcase, 1 chair	5 lf of storage
11	Staff Storage	10 sf	0	0	0	0	Coat and Storage Closet	Shelf and Coat Rack	Support space for main circulation functions, furniture defines area with public counters that may not be used.
12	Back Circulation Desk	150 sf	0	3	0	0	Working Staff Area with Access to Public	3 desks, 2 side tables, 1 long counter, 2 filing cabinets	Too much furniture that does not meet staff needs, not enough room for staff meetings, not enough room for IT computer repair and storage
13	Staff Workroom	350 sf	0	2	0	0	Staff backoffice workspace, mail room, IT storage and repair	2 desks, 1 table, 3 worktables, 1 safe, 2 lateral file cab, 2 4dr file cab, carts, metal wall shelving, staff mailboxes	Must keep separate from check-out functions
14	Circulation Discharge	88 sf	0	1	0	0	Drop-Slot, Book and media check-in	6 mobile carts, computer station for check-in functions	5 of cleaning supply storage
15	Staff Restroom	32 sf	0	0	0	0	Staff bathroom and supply storage	storage shelves	A private function not needing prox. To public areas; room has steps into it making cart access difficult.
16	Cataloguing and Processing	145 sf	0	2	0	0	75 lf of shelves, cataloging of materials	metal desk, misc shelving, storage cabinets, 2 chairs, long counter	
17	West Side Entrance Stair	126 sf	0	0	0	0	Entry from parking, book-drop box	book sale table	
18	Elevator Lobby	126 sf	0	0	0	0	Access from stairs and elevator		
	Total Main Floor (Net)	4,583 sf	45	13	1,963	1,963			

Mezzanine

19	West Stair Hallway	180 sf	0	0	96	96	Circulation, display, Stacks, Adult Fiction, 1 computer catal. Sta.	9 lf of game shelves, 8 lf of display shelves metal braced shelving, 3 - Media Stands, 1 Round Paperback book stand, 1 standing computer access station	Desire to add study table space and public computer station space
20	North Stacks Mezzanine Level	1,534 sf	0	0	1460	1460	Non-print media	9- 3 ft wall shelf units, 2- 3 ft 2 sided shelf units	Changing use depending on media demands
21	North Stacks Alcove Mezzanine	170 sf	0	0	273	273	Reading room, Vermont Collection Room	4 upholstered chairs, 6 wood chairs, 2 side tables, 2 study tables, 2 benches, 1 lockable glass case, wood bookshelves	lower ceiling, room structural load designed for stacks, connection acoustically and visually to lobby, comfortable
22	Center Stacks Mezzanine	495 sf	10	0	90	90	Study Spaces: private	1 table, 6 chairs	Teens use this for group study, window to hallway
23	Study Room	72 sf	6	0	0	0	Study Space: private	4 bookcases, 4 chairs, wood table	Could be used for private study or meetings
24	Study Room	96 sf	4	0	48	48	Storage of back issues		
25	Newspaper Storage	72 sf	0	0	0	0	Lockable Vermont Room	3 chairs, 1 table, 3 bookcases	
26	Vermont Reference Room	104 sf	3	0	60	60	Staff lounge and lunch space	lunch table, chairs, counter for private storage	
27	Staff Lunch Room	145 sf	0	4	0	0	circulation only		
28	West Stair Mezzanine	126 sf	0	0	0	0	circulation only		
29	Elevator Lobby Mezzanine	126 sf	0	0	0	0	circulation only		

Destination of Space	Area Example	Public Seat	Staff Seating	Stowing	Use	Furniture	Comments/Opportunities
----------------------	--------------	-------------	---------------	---------	-----	-----------	------------------------

Total Mezzanine Floor (Net)		3,120 sf	23	4	2,027 lf		
Lower Floor							
30	South Lower Entrance	108 sf	0	0	0 lf	Off- Hours Entrance and Coat Room	
31	Kitchen	72 sf	0	0	0 lf	Kitchen - Warming and min. prep	
32	Storage	72 sf	0	0	0 lf	Chair, table, and supply storage	
33	Community Meeting Room	1,088 sf	72	0	0 lf	85% Public (non-library) Use	would like room for groups of 30, WIFI dead space, too small for children's programs, carpet not conducive to crafts
34	East Stair Lower Level	152 sf	0	0	0 lf	Provides 2nd egress for meeting room	
35	Restroom	64 sf	0	0	0 lf	Meeting Room Restroom	
36	Restroom	64 sf	0	0	0 lf	Meeting Room Restroom	
37	Youth Services	572 sf	17	0	1246 lf	Young adult stacks, study, and childrens story room	3 computer stations, 1 couch, 4 reading chairs, 1 round table/ 4 chairs, 1 coffee table, 1 study table/4 chairs,book and media shelves
38	Juvenile Services	1104 sf	7	0	1012 lf	check-out and information materials	2 computer stations, 1 standing comp. station, 1 couch, 1 round table w/ 4 chairs, bookcases
39	Circulation Desk	96 sf	0	3	0 lf	Librarian and assistant/workstations, media shelving for DVD check-out tables	misc. counter, undercounter storage, and shelving
40	Staff Office	160 sf	0	2	120 lf	Pre-School bookshelves, bins, tables	shelving along perimeter, 2 desks, misc. storage
41	Pre-School Services	570 sf	9	0	266 lf	Boiler, some building storage	bookcases, 1 round table w/7 chairs, 2 reading chairs, 6 big book bins
42	Mechanical Room	160 sf	0	0	0 lf	Paint Supplies, cleaning supplies	
43	Janitors Closet	63 sf	0	0	0 lf	Access from West Stairway	
44	Restroom	54 sf	0	0	0 lf	Access from West Stairway	
45	Restroom	64 sf	0	0	0 lf	Building Mechanical	
46	Mechanical Room	126 sf	0	0	0 lf	Circulation	
47	West Stair Lower Level	129 sf	0	0	0 lf	Circulation	
48	Elevator Lobby Lower Level	129 sf	0	0	0 lf	Sprinkler Riser Closet	
49	Sprinkler Service	42 sf	0	0	0 lf		
Total Lower Floor (Net)		4,889 sf	105	5	2,644 lf		Vented door allows sound from compressor to

Third Floor (Attic)							
50	Third Floor West Stair	129 sf	0	0	0 lf	Circulation	
51	Third floor Elevator Lobby	129 sf	0	0	0 lf	Circulation	
52	Third Floor Restroom	96 sf	0	0	0 lf	Restroom/ Storage	Counter and base cabinets
53	Third Floor TV Station	403 sf	0	0	0 lf	Used current as TV station recording	
54	Center Storage	170 sf	0	0	0 lf	Storage	
55	Storage Closet	28 sf	0	0	0 lf	Storage	
56	Storage Closet	28 sf	0	0	0 lf	Storage	
57	Attic East Storage	247 sf	0	0	0 lf	Storage	
58	Attic West Storage	247 sf	0	0	0 lf	Storage	
Total Third Floor (Net)		1477 sf	0	0	0 lf		

Totals: Lower, 1st, Mezz. And Third		14,069 sf	173	22	6,634 lf	shelving available with current shelving/bookcases (does not count lower and upper stack shelves currently not used)	
						not including the meeting room	