



EXAMPLES OF LIBRARY DESIGN

ADAPTED FROM ALA'S 2021 LIBRARY DESIGN SHOWCASE



BALDWIN PUBLIC LIBRARY IN BIRMINGHAM, MICHIGAN

- **Three Phase Renovation Plan**
- **PHASE 1: ADULT SERVICES RENOVATION**
(Completed in May 2017)
- **PHASE 2: YOUTH ROOM EXPANSION AND RENOVATION**
(Completed in September 2020)
- **PHASE 3: CIRCULATION, LOBBY, AND PUBLIC ENTRANCE RENOVATION**
(Proposed for 2023)



BALDWIN PUBLIC LIBRARY IN BIRMINGHAM, MICHIGAN

Entry Experience – Provide an engaging entry portal that celebrates children of all ages and their interests while avoiding the use of tired or overly childish themes.



BALDWIN PUBLIC LIBRARY IN BIRMINGHAM, MICHIGAN

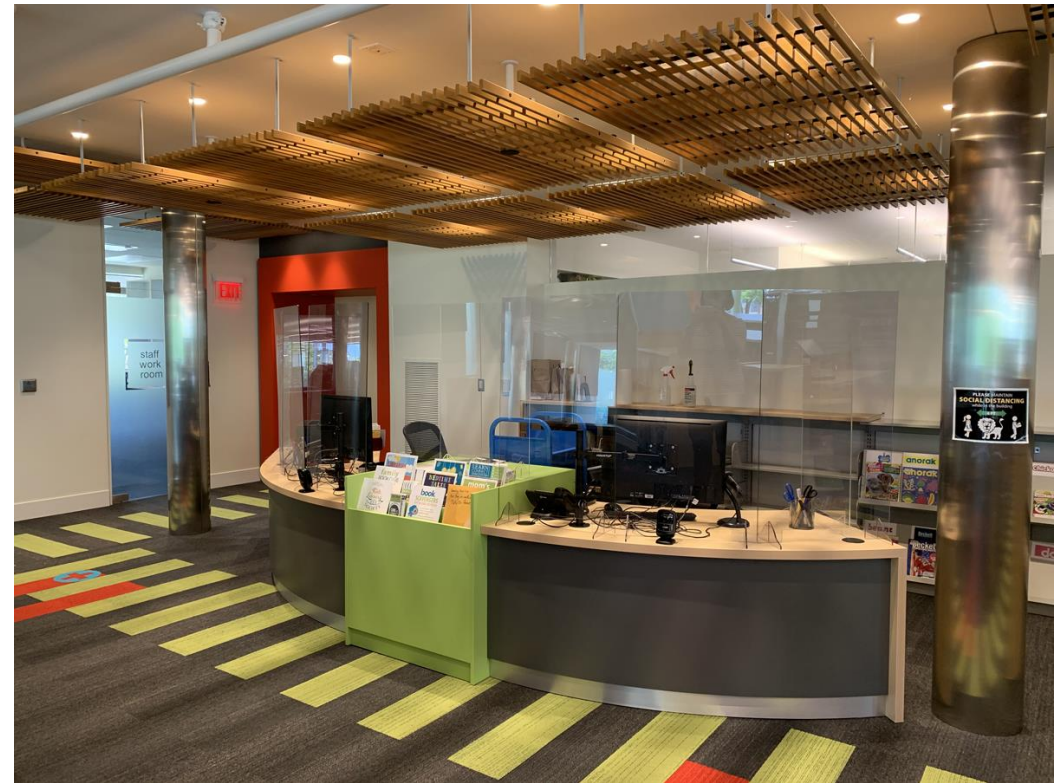
Within the entry area:

- 3 to 5 large bulletin boards or tackable surfaces
- Parking area for 6 strollers
- 4 young child Playschool style shopping carts (a tradition)
- 20 coat pegs at child heights



BALDWIN PUBLIC LIBRARY IN BIRMINGHAM, MICHIGAN

- Public Service Desk: the desk design should match the youthful feeling of the room
- 2 seated staff stations each with computer, telephone, pencil/box/file drawers, LAN printer
- room for 2 book carts
- easy egress for staff to get to public floor



BALDWIN PUBLIC LIBRARY IN BIRMINGHAM, MICHIGAN

- Young Child Zone (1,418 sf) collection shelving, four-place child-height table, 4 adult soft seats chairs for parent or parent with child seating, 4 child soft seats
- An activity / emergent literacy area for very young children, visible from the public service desk and part of the department's open landscape.



BALDWIN PUBLIC LIBRARY IN BIRMINGHAM, MICHIGAN

- Nooks! Small spaces where children can read and rest privately.



BALDWIN PUBLIC LIBRARY IN BIRMINGHAM, MICHIGAN

- 3 study spaces for tutoring pairs, small group collaboration, and individual study. 10 computer workstations.



BALDWIN PUBLIC LIBRARY IN BIRMINGHAM, MICHIGAN

- Youth Program Room (820 sf)
- A special space for storytelling, crafts, and other group programs. The room should seat 20 children on a carpeted floor with 20 parents in chairs.
- 2 craft tables on resilient flooring. A counter with cupboards, microwave, refrigerator, and two sinks.



BALDWIN PUBLIC LIBRARY IN BIRMINGHAM, MICHIGAN

Storeroom (410 sf)

- A storeroom for craft supplies and display pieces is to be located off the workroom with a connecting door to the Youth Program Room. In addition to shelving and cabinets, the room is to include 80 square feet of floor space for storage of larger objects and carts.





CINCINNATI AND HAMILTON COUNTY (OHIO) PUBLIC LIBRARY, PRICE HILL BRANCH

PROJECT TYPE: RENOVATION AND EXPANSION ARCHITECTS: FISHBECK; INTERIOR PROJECT MANAGEMENT SIZE:
14,000 SQUARE FEET COST: \$7.3 MILLION



CINCINNATI AND HAMILTON COUNTY (OHIO) PUBLIC LIBRARY

- After a partial, after-hours ceiling collapse in 2018 led to the closure of this 1909 Carnegie building, Cincinnati and Hamilton County Public Library decided to renovate and expand the facility. The basement was converted into the main floor, allowing the new upper level to house meeting room spaces. Original elements were restored throughout, including the skylight and tiled foyer, and nods to the building's past were added, including interior octagonal tiles and matching brick masonry. The new building is now ADA-compliant, and Spanish-language signage was added to welcome the area's growing Spanish-speaking community.



CINCINNATI AND HAMILTON COUNTY (OHIO) PUBLIC LIBRARY

- Additional 6,793 square feet of indoor space, increasing to over 12,000 square feet of useable space
- Accessible to wheelchairs, walkers, and strollers
- Designated quiet areas
- Re-envisioned spaces for adults, teens, kids



CINCINNATI AND HAMILTON COUNTY (OHIO) PUBLIC LIBRARY



CINCINNATI AND HAMILTON COUNTY (OHIO) PUBLIC LIBRARY

- Three study rooms, four meeting rooms, and a meeting space accommodating up to 100 people



CINCINNATI AND HAMILTON COUNTY (OHIO) PUBLIC LIBRARY



<https://cincinnatiandhamiltonlibrary.org/next-generation/price-hill/>



MERIDIAN (IDAHO) LIBRARY DISTRICT, UNBOUND BRANCH

PROJECT TYPE: ADAPTIVE REUSE ARCHITECT: MSR DESIGN SIZE: 3,800 SQUARE FEET COST: \$1.4 MILLION



MERIDIAN (IDAHO) LIBRARY DISTRICT, UNBOUND BRANCH

- MSR Design renovated a two-story building in downtown Meridian, situated among multiple mixed-use developments, to create a library branch focused on resources for small businesses and technology. Entrepreneurs at all levels can find business-focused books and programs, collaborative meeting spaces, makerspaces, 3D printers, laser engravers, a laminating machine, a digital design lab, and a recording studio.



MERIDIAN (IDAHO) LIBRARY DISTRICT, UNBOUND BRANCH

CONNECT Lounge

- Casual cafe-style seating
- Informal meeting/work space



MERIDIAN (IDAHO) LIBRARY DISTRICT, UNBOUND BRANCH

CREATE Corner

- Receive training to operate the equipment on your own
- Submit files online
- Schedule a design consultation with our staff
- See full list of equipment and reserve time with machines



MERIDIAN (IDAHO) LIBRARY DISTRICT, UNBOUND BRANCH

DESIGN Lab

- iMac computer lab
 - Adobe Creative Cloud (Photoshop, Illustrator, InDesign, etc.)
 - Logic Pro
- Large format printer and laminator
- Digitization equipment
 - VHS to DVD
 - Film to digital
 - Floppy to digital



MERIDIAN (IDAHO) LIBRARY DISTRICT, UNBOUND BRANCH

MEET Conference Room

- Formal meeting space
- Whiteboard
- Smart display for presentations, screen sharing, and collaboration



MERIDIAN (IDAHO) LIBRARY DISTRICT, UNBOUND BRANCH

RECORD Sound Studio

- Sound-dampened space for audio recording
- Start recording your podcast in minutes
- iMac for editing
 - LogicPro
 - Audacity
 - GarageBand
- RODECaster Pro Integrated Podcast Production Console
- Studio quality microphones
- MIDI Keyboard



MERIDIAN (IDAHO) LIBRARY DISTRICT, UNBOUND BRANCH

SHARE Meeting Space

- Informal meeting space
- Smart display with embedded camera for hybrid meetings, collaboration, and presentations
- Refrigerator and microwave



MERIDIAN (IDAHO) LIBRARY DISTRICT, UNBOUND BRANCH

WORK Space

- Flexible workspace designed to accommodate groups, individuals, and classroom seating





EAST BATON ROUGE (LA.) PARISH LIBRARY, RIVER CENTER BRANCH

ARCHITECTS: WHLC ARCHITECTURE; SCHWARTZ/SILVER ARCHITECTS

SIZE: 49,000 SQUARE FEET COST: \$21.4 MILLION



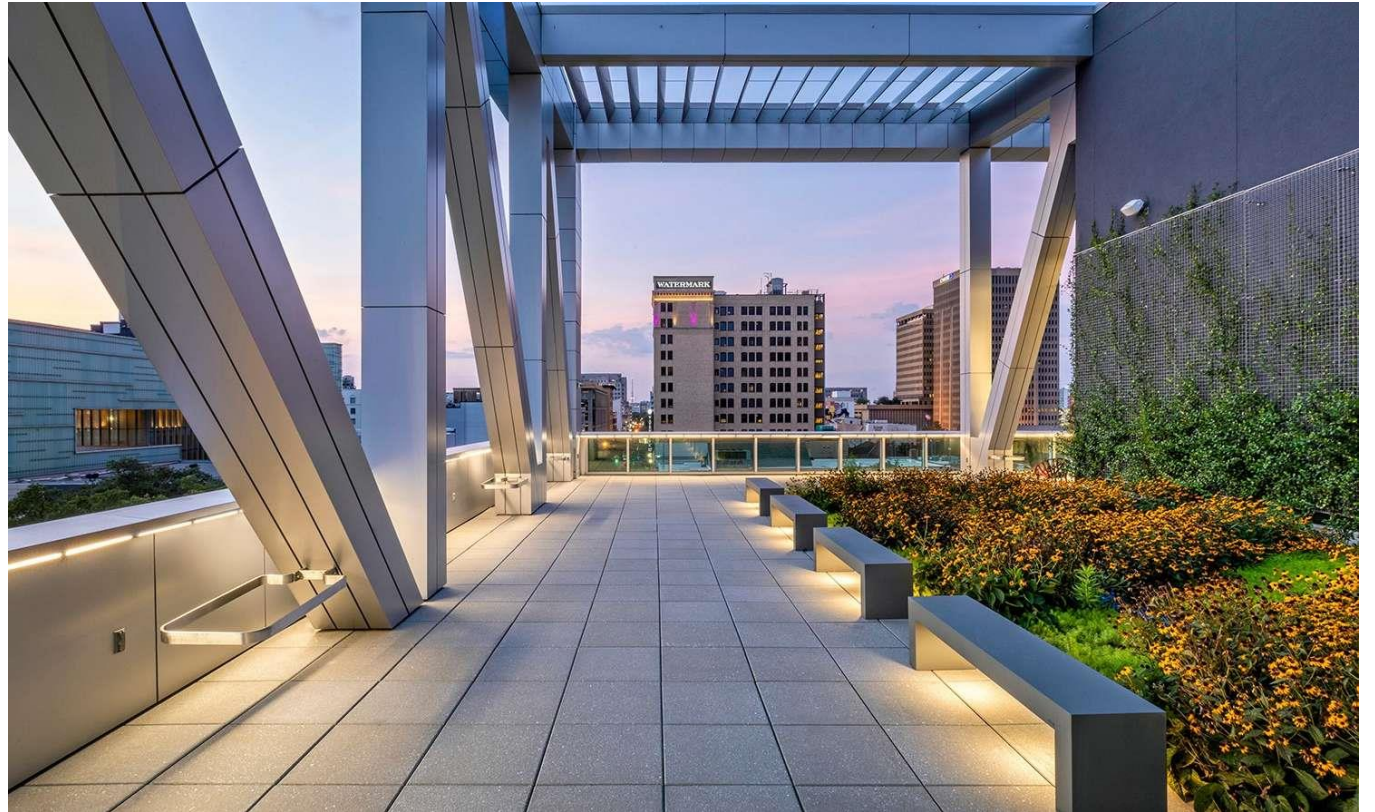
EAST BATON ROUGE (LA.) PARISH LIBRARY, RIVER CENTER BRANCH

The River Center Library creates a new model for library services for the City. In addition to traditional collections, it provides meeting rooms for community programming, outreach and creative collaboration; themed media walls, art walls, interactive kiosks, and conference rooms equipped with remote distance learning technology; a café; media/tech lab; business pods; a foundation and grants center; a maker room; a dedicated teen programming/gaming space, and a recording studio.



EAST BATON ROUGE (LA.) PARISH LIBRARY, RIVER CENTER BRANCH

The project responds to the local climate with a shaded public plaza, trellised roof terrace, and sculptural sunshade ribbons on the south, east and west windows.



EAST BATON ROUGE (LA.) PARISH LIBRARY, RIVER CENTER BRANCH

The project responds to the local climate with a shaded public plaza, trellised roof terrace, and sculptural sunshade ribbons on the south, east and west windows.



EAST BATON ROUGE (LA.) PARISH LIBRARY, RIVER CENTER BRANCH

The flexibly designed interiors allowed the building to open successfully during the COVID-19 pandemic, requiring only moderate adjustments to meet requirements for physical distancing.



EAST BATON ROUGE (LA.) PARISH LIBRARY, RIVER CENTER BRANCH

Even with public health restrictions, the new library is providing the community with access to diverse forms of media and other essential services, and serves as a vibrant community hub.



EAST BATON ROUGE (LA.) PARISH LIBRARY, RIVER CENTER BRANCH

The library has dedicated floors for Children, Adults and Teens, and this stacking of major program elements allows a direct visual link to the Mississippi River from the upper levels.





FAYETTEVILLE (ARK.) PUBLIC LIBRARY

PROJECT TYPE: RENOVATION AND EXPANSION ARCHITECT: MSR DESIGN

SIZE: 168,000 SQUARE FEET COST: \$49 MILLION



FAYETTEVILLE (ARK.) PUBLIC LIBRARY

- Opened to the public in January of 2021, the expanded FPL redefines the traditional public library model, providing education, services, and out-of-the-box programs for all ages.



FAYETTEVILLE (ARK.) PUBLIC LIBRARY



- 32,000 square feet of Children's Library. Pictured left: Walmart Storytime Room. Pictured right: Pre-school library.

FAYETTEVILLE (ARK.) PUBLIC LIBRARY



- Standalone **Teen Library** with a private teens-only lounge and gaming center. Pictured right: Teen Game Room. Pictured left: Teen collection.

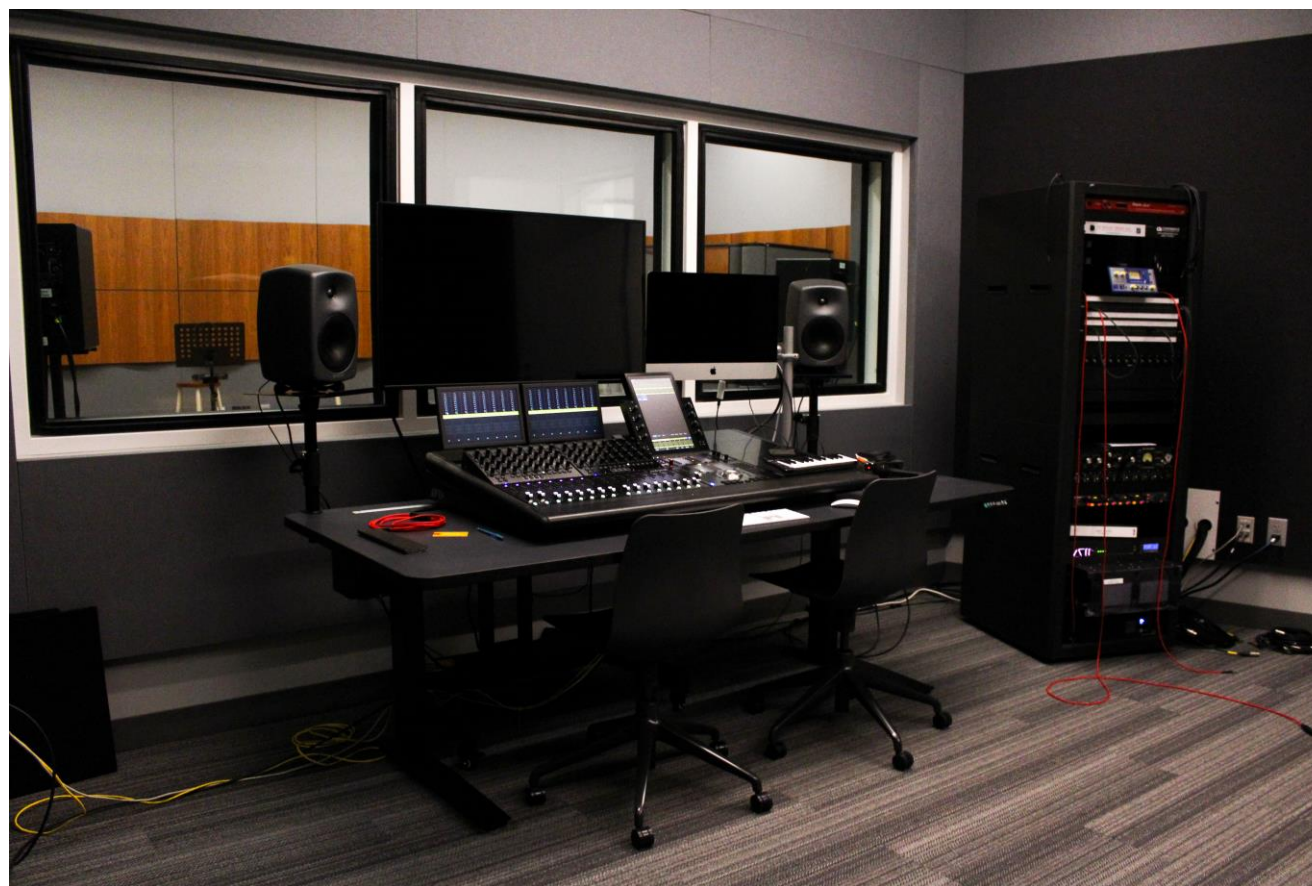
FAYETTEVILLE (ARK.) PUBLIC LIBRARY

- 16-station **Teaching Kitchen**



FAYETTEVILLE (ARK.) PUBLIC LIBRARY

- **Center for Innovation** complete with audio and video recording studios, virtual reality studio, photography studio, a simulation lab, and a fabrication and robotics lab



FAYETTEVILLE (ARK.) PUBLIC LIBRARY



- More meeting, study, and collaboration spaces. Pictured left: conference room. Pictured right: craft room.

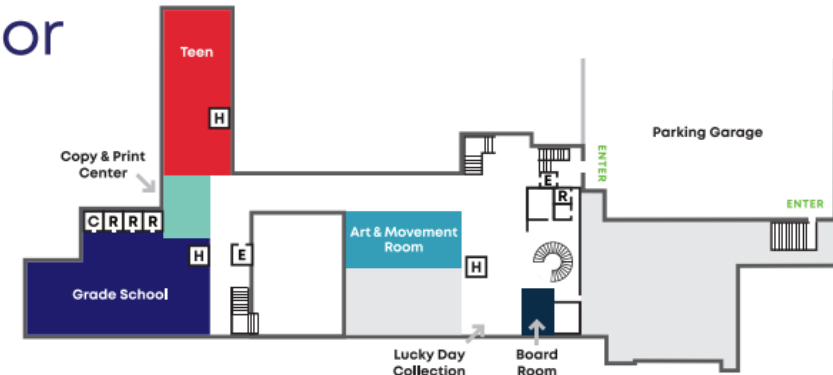
FAYETTEVILLE (ARK.) PUBLIC LIBRARY



Explore FPL
by the Floor

- R Restroom
- C Comfort Room
- E Elevator
- H Help Desk
- Stairs

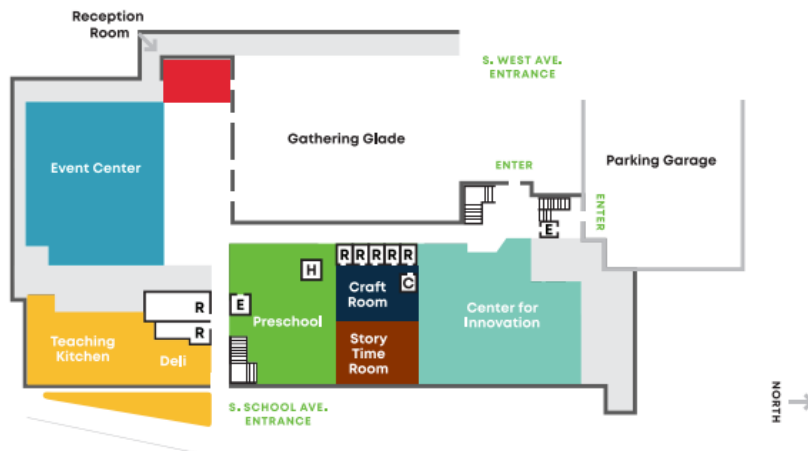
200



000



100
GROUND LEVEL



FAYETTEVILLE (ARK.) PUBLIC LIBRARY



Explore FPL by the Floor

- R** Restroom
- E** Elevator
- H** Help Desk
- Stairs

