

1293 Route 7 South
Middlebury, VT 05753
P 802 388 9871
F 802 388 3815
www.breadloaf.com

Civil Engineer

Otter Creek Engineering, Inc.
P.O. Box 712
404 East Main St.
East Middlebury, VT 05740
(802) 382-8522

Structural Engineer

Sellars Treybal
Structural Engineers PC
145 Pine Haven Shores Rd.
Suite #2091
Shelburne, VT 05482
(802) 497-1174

Mechanical Engineer

Vermont Heating and Ventilating
16 Tigan Street Suite A
Winoski, VT, 05404
800 451 0013

Electrical Engineer

Mike's Electric
338 Boyer Circle Suite 20
Williston, VT, 05495
(802) 988 9678

Fire Protection

North Country Fire Protection
PO Box 2004
Colchester, VT, 05449
(802) 878 6594

© 2015, Bread Loaf Corporation
Seal:



Revised

| No. | Date | Description |
|-----|----------|----------------|
| 0 | 1/19/15 | Bulletin 1 |
| 1 | 03/12/15 | Bulletin 4 IFC |

Town Office Building
Town of Middlebury
Middlebury, Vt

Proj. No: 141.037A Drawn:HB
Date: 11/21/2014 Chk'd: BR

Existing and
Demolition Plan

C-1.0

GENERAL NOTES

- THESE PLANS ARE BASED ON A TOPOGRAPHIC SURVEY CONDUCTED WITH A THREE SECOND TOTAL STATION ON 5/28/14 BY OTTER CREEK ENGINEERING, INC.
- IN THE PREPARATION OF THESE PLANS, DATA FROM THE FOLLOWING SOURCES WAS INCORPORATED:
 - ELEVATION AND COORDINATE SYSTEM ARE BASED ON DATA FROM A PLAN PREPARED BY PHELPS ENGINEERING, INC., FOR VANASSE HANGEN BRUSTLIN, INC.
 - PROPERTY LINES AND UNDERGROUND UTILITIES ARE BASED ON PLANS TITLED "MIDDLEBURY - CSB, PROJECT NUMBER: 57262", PREPARED BY VANASSE HANGEN BRUSTLIN, INC., DATED 1/6/2011. UNDERGROUND UTILITIES HAVE BEEN FIELD VERIFIED BY OTTER CREEK ENGINEERING, INC. ON THE SOUTH SIDE OF THE OSBORNE HOUSE AND CROSS STREET.
- ELEVATION IS BASED ON NAVD 88.
- COORDINATE SYSTEM IS BASED ON NAD 83.
- FOR CLARITY, TEXT DENOTING EXISTING ITEMS IS SHOWN IN LOWER CASE, AND TEXT DENOTING PROPOSED ITEMS IS UPPERCASE AND BOLD.
- REFER TO LEGEND LOCATED ON THIS SHEET FOR SYMBOL DESIGNATIONS.
- ALL UNDERGROUND UTILITIES ARE SHOWN AS APPROXIMATE LOCATIONS.
- THIS IS NOT A BOUNDARY SURVEY.
- CONTRACT DOCUMENTS AND TECHNICAL SPECIFICATIONS ACCOMPANY THESE PLANS AND ARE ESSENTIAL FOR CONSTRUCTION OF THIS PROJECT.

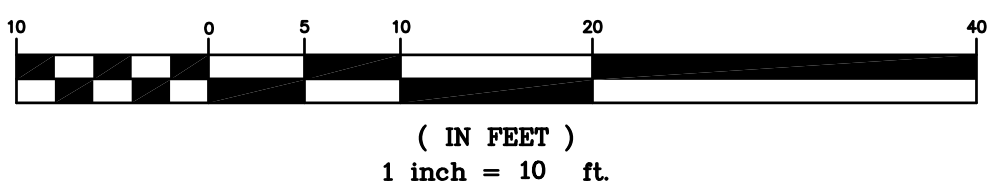
LEGEND

| | |
|--|--|
| | boundary line/r.o.w. |
| | road/parking (w/ surface label) |
| | drive (w/ surface label) |
| | tree line/hedge row |
| | 1 foot contour |
| | 5 foot contour |
| | stone wall |
| | underground electric |
| | sanitary sewer |
| | overhead utility |
| | underground telephone |
| | abandoned underground electric/telephone |
| | ditch line/drainage |
| | storm drain |
| | water main |
| | water main (TO BE ABANDONED) |
| | sanitary sewer (TO BE ABANDONED) |
| | sewer force main |
| | signs |
| | light pole |
| | utility pole |
| | guy |
| | gate valve |
| | curb stop |
| | hydrant |
| | iron pipe found |
| | catch basin |
| | sewer manhole |
| | deciduous tree |
| | coniferous tree |
| | shrub, bush |
| | stump |
| | traverse station |
| | temporary bench mark |
| | FINISH GRADE |
| | STORM DRAIN |
| | YARD DRAIN |
| | WATER MAIN |
| | WATER SERVICE |
| | GATE VALVE |
| | CURB STOP |
| | SANITARY SEWER |
| | CLEANOUT |
| | UTILITY POLE |
| | GUY WIRE |
| | UNDERGROUND ELECTRIC |
| | SIGN |
| | OVERHEAD UTILITY |
| | UNDERGROUND COMMUNICATIONS |

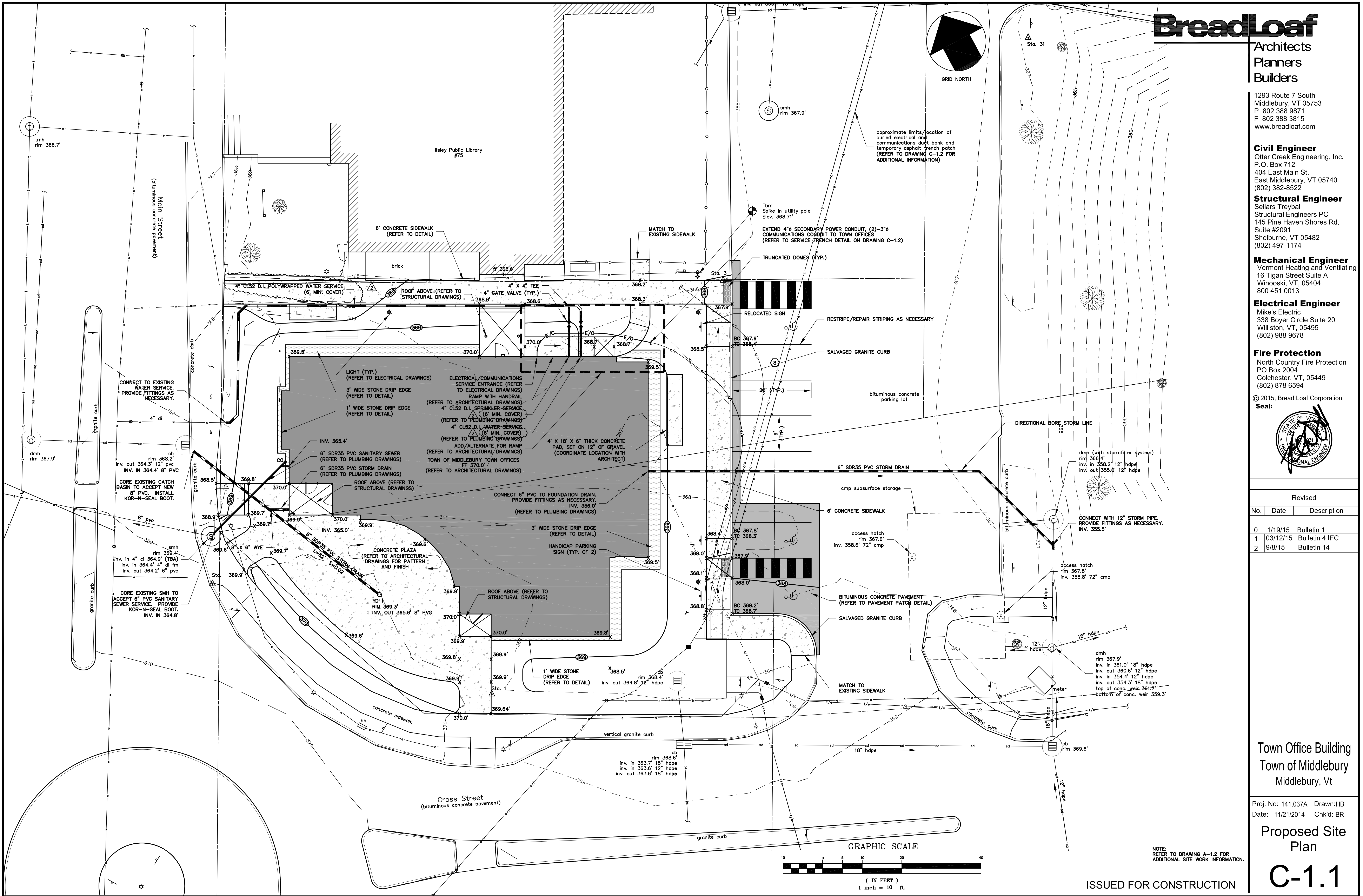
ABBREVIATIONS

| | | | |
|------|-----------------------------|-----|------------------------|
| CI | - CAST IRON | IPF | - IRON PIPE/PIN FOUND |
| CB | - CATCH BASIN | MH | - MANHOLE |
| CL | - CLASS | NFL | - NOT FIELD LOCATED |
| CL | - CORRUGATED METAL PIPE | NTS | - NOT TO SCALE |
| CMP | - CURB STOP | ROW | - RIGHT OF WAY |
| CS | - DUCTILE IRON | S | - SANITARY SEWER |
| DI | - FORCE MAIN | SD | - STORM DRAIN |
| FM | - GATE VALVE | SMH | - SEWER MANHOLE |
| GV | - HIGH DENSITY POLYETHYLENE | TBM | - TEMPORARY BENCH MARK |
| HDPE | - HYDRANT | TBA | - TO BE ABANDONED |
| HYD | - INVERT | TBR | - TO BE REMOVED |
| INV | - IRON PIPE/PIN | TBS | - TO BE SALVAGED |
| IP | | TMH | - TELEPHONE MANHOLE |

GRAPHIC SCALE



ISSUED FOR CONSTRUCTION



SITE ELECTRICAL, TELEPHONE AND CABLE TELEVISION NOTES:

1. UTILITY COMPANIES SHALL RELOCATE OVERHEAD LINES FROM EXISTING POLE 1-0 TO THE PROPOSED LOCATION OF POLE 1 AS DEPICTED.
2. SITE CONTRACTOR IS RESPONSIBLE FOR INSTALLATION OF CONDUIT, SWEEPS, AND PULL STRINGS IN ACCORDANCE WITH RESPECTIVE UTILITIES STANDARD DETAIL. PEDESTALS, TRANSFORMERS, CONDUCTORS, GROUNDING WIRE, AND INTERCONNECTIONS SHALL BE BY OTHERS.
3. CONTRACTOR SHALL NOTIFY GREEN MOUNTAIN POWER PRIOR TO BACKFILL OF CONDUIT FOR INSPECTION.
4. AT ALL ROADWAY CROSSINGS OR PAVED AREAS (I.e. PARKING LOTS), THE PRIMARY, SECONDARY AND SERVICE CONDUITS SHALL BE CONCRETE ENCASED. REFER TO TRENCH DETAILS FOR ENCASEMENT REQUIREMENTS.
5. COORDINATE ALL ELECTRICAL, TELEPHONE AND CABLE TV PADS, PEDESTALS, VAULTS, AND TRANSFORMER LOCATIONS WITH OWNER/ARCHITECT PRIOR TO INSTALLATION.
6. ELECTRICAL VAULT #1 SHALL COMPLY WITH GREEN MOUNTAIN POWER, DISTRIBUTION STANDARD 2146.
7. ELECTRICAL VAULT #2 SHALL COMPLY WITH GREEN MOUNTAIN POWER, DISTRIBUTION STANDARD 2148.
8. UNLESS NOTED OTHERWISE, ALL NEW CONDUIT SHALL BE BURIED.

*NOTE:

1. ELECTRICAL AND COMMUNICATION IMPROVEMENTS DEPICTED ON THIS PLAN HAVE BEEN COMPLETED AS PART OF EARLY RELEASE UTILITY RELOCATION PACKAGE. SITE CONTRACTOR FOR TOWN OFFICES PROJECT SHALL BE RESPONSIBLE FOR REMOVING EXISTING COLD PATCH TRENCH PAVING, SAW CUTTING AS NECESSARY TO PROVIDE A CLEAN, HARD EDGE, AND PROVIDING FINAL ASPHALT TRENCH PATCH AND BITUMINOUS CONCRETE CURB IN ACCORDANCE WITH DETAILS.

BreadLoaf

Architects
Planners
Builders

1293 Route 7 South
Middlebury, VT 05753
P 802 388 9871
F 802 388 3815
www.breadloaf.com

Civil Engineer

Otter Creek Engineering, Inc.
P.O. Box 712
404 East Main St.
East Middlebury, VT 05740
(802) 382-8522

Structural Engineer

Sellars Treybal
Structural Engineers PC
145 Pine Haven Shores Rd.
Suite #2091
Shelburne, VT 05482
(802) 497-1174

Mechanical Engineer

Vermont Heating and Ventilating
16 Tigan Street Suite A
Winooski, VT, 05404
800 451 0013

Electrical Engineer

Mike's Electric
338 Boyer Circle Suite 20
Williston, VT, 05495
(802) 988 9678

Fire Protection

North Country Fire Protection
PO Box 2004
Colchester, VT, 05449
(802) 878 6594

© 2015, Bread Loaf Corporation
Seal:



Revised

| No. | Date | Description |
|-----|----------|----------------|
| 0 | 1/19/15 | Bulletin 1 |
| 1 | 03/12/15 | Bulletin 4 IFC |

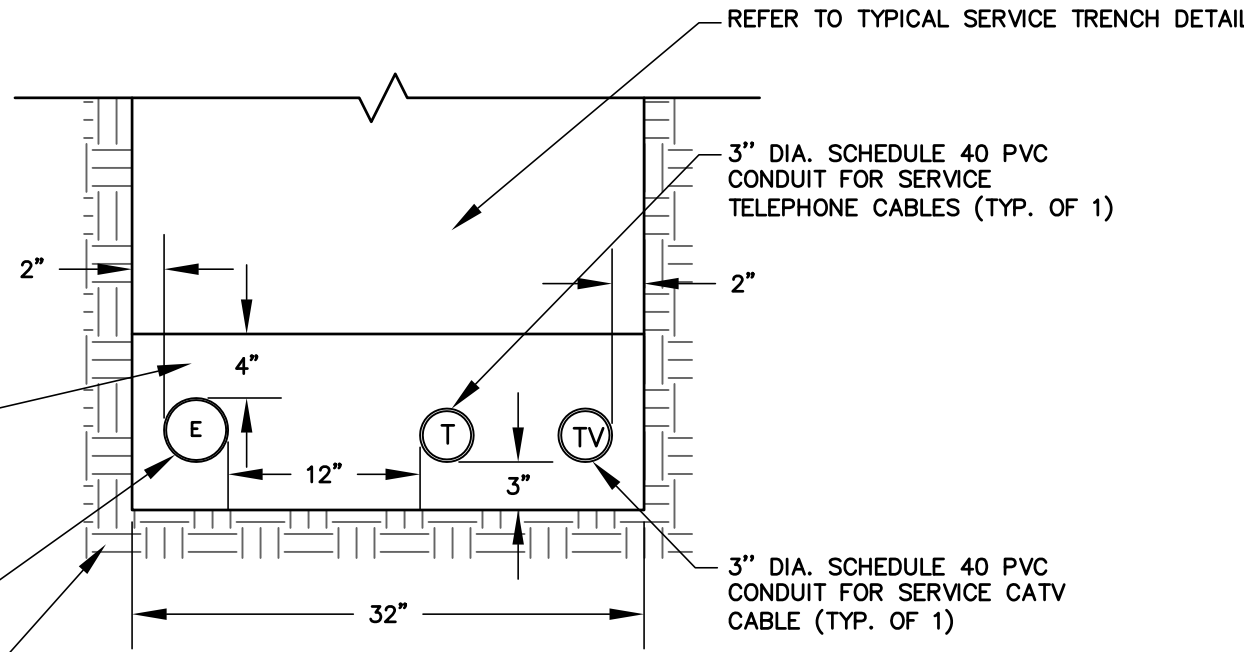
No Revisions This Sheet

Town Office Building
Town of Middlebury
Middlebury, Vt

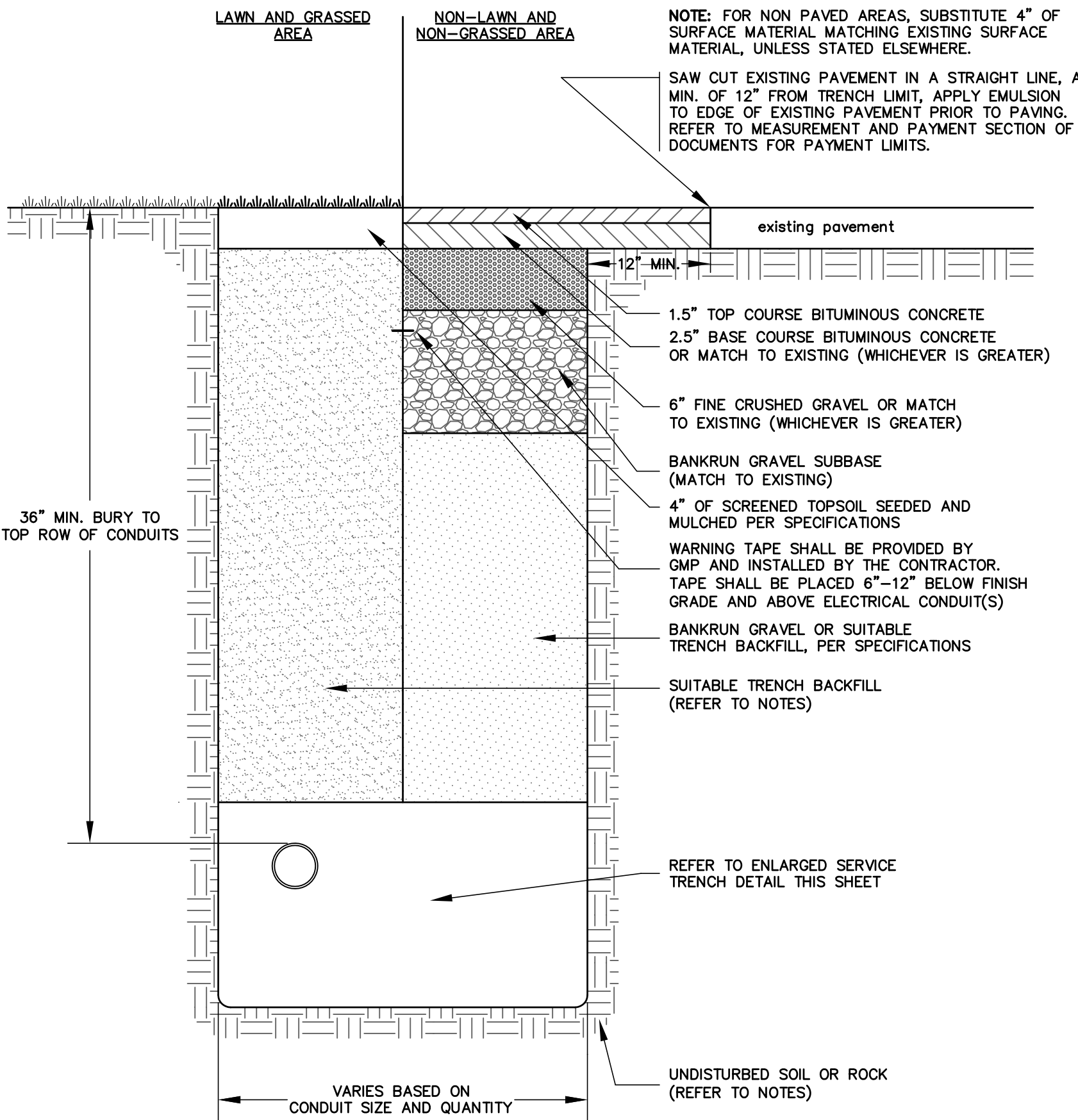
Proj. No: 141.037A Drawn:HB
Date: 11/21/2014 Chk'd: BR

Site Electric Plan

C-1.2

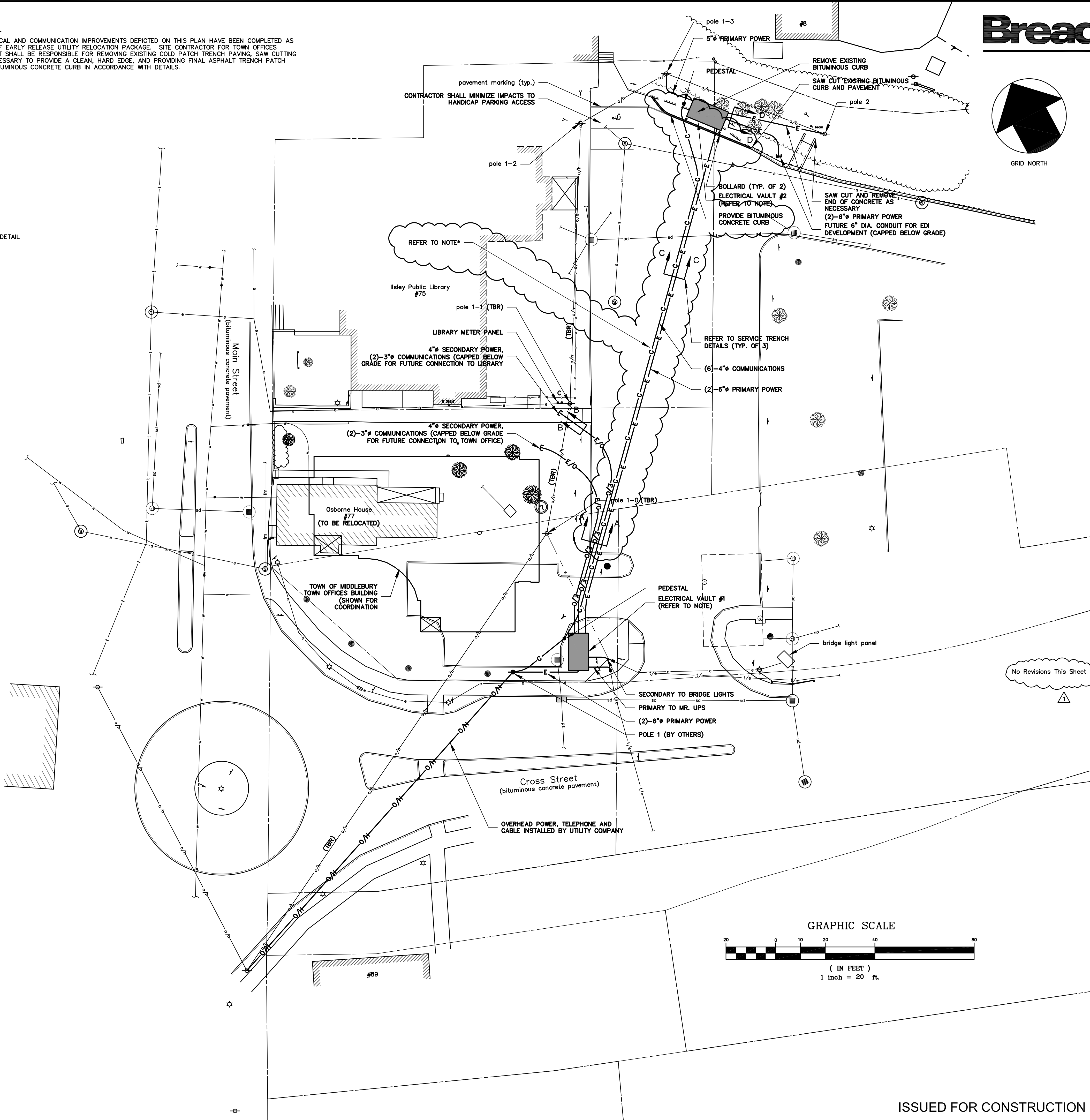


SERVICE TRENCH DETAIL
NOT TO SCALE



- NOTES:
1. IN PAVED AREAS OR WHERE POWER CONDUITS ARE LOCATED CLOSER THAN 8 FEET, AND RUN PARALLEL TO ANY BUILDING STRUCTURE, AS WELL AS ANY SANITARY, WATER OR GAS UTILITY, CONDUIT SHALL BE CONCRETE ENCASED. REFER TO DETAIL.
 2. SUITABLE MATERIAL SHALL CONTAIN NO STONES GREATER THAN 4" IN DIAMETER, NO FROZEN LUMPS, AND ONLY MINOR AMOUNTS OF CLAY. COMPACTION SHALL OCCUR IN 6"-8" LIFTS, EACH LIFT SHALL BE APPROPRIATELY COMPACTED PRIOR TO PLACING NEXT LIFT.

TYPICAL SERVICE TRENCH DETAIL
NOT TO SCALE



ISSUED FOR CONSTRUCTION

Civil Engineer

Otter Creek Engineering, Inc.
P.O. Box 712
404 East Main St.
East Middlebury, VT 05740
(802) 382-8522

Structural Engineer

Sellars Treybal
Structural Engineers PC
145 Pine Haven Shores Rd.
Suite #2091
Shelburne, VT 05482
(802) 497-1174

Mechanical Engineer

Vermont Heating and Ventilating
16 Tigan Street Suite A
Winooski, VT, 05404
800 451 0013

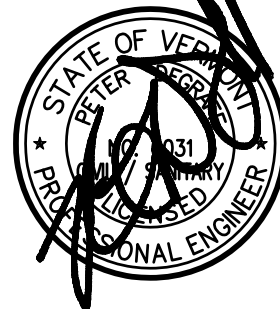
Electrical Engineer

Mike's Electric
338 Boyer Circle Suite 20
Williston, VT, 05495
(802) 988 9678

Fire Protection

North Country Fire Protection
PO Box 2004
Colchester, VT, 05449
(802) 878 6594

© 2015, Bread Loaf Corporation
Seal:



Revised

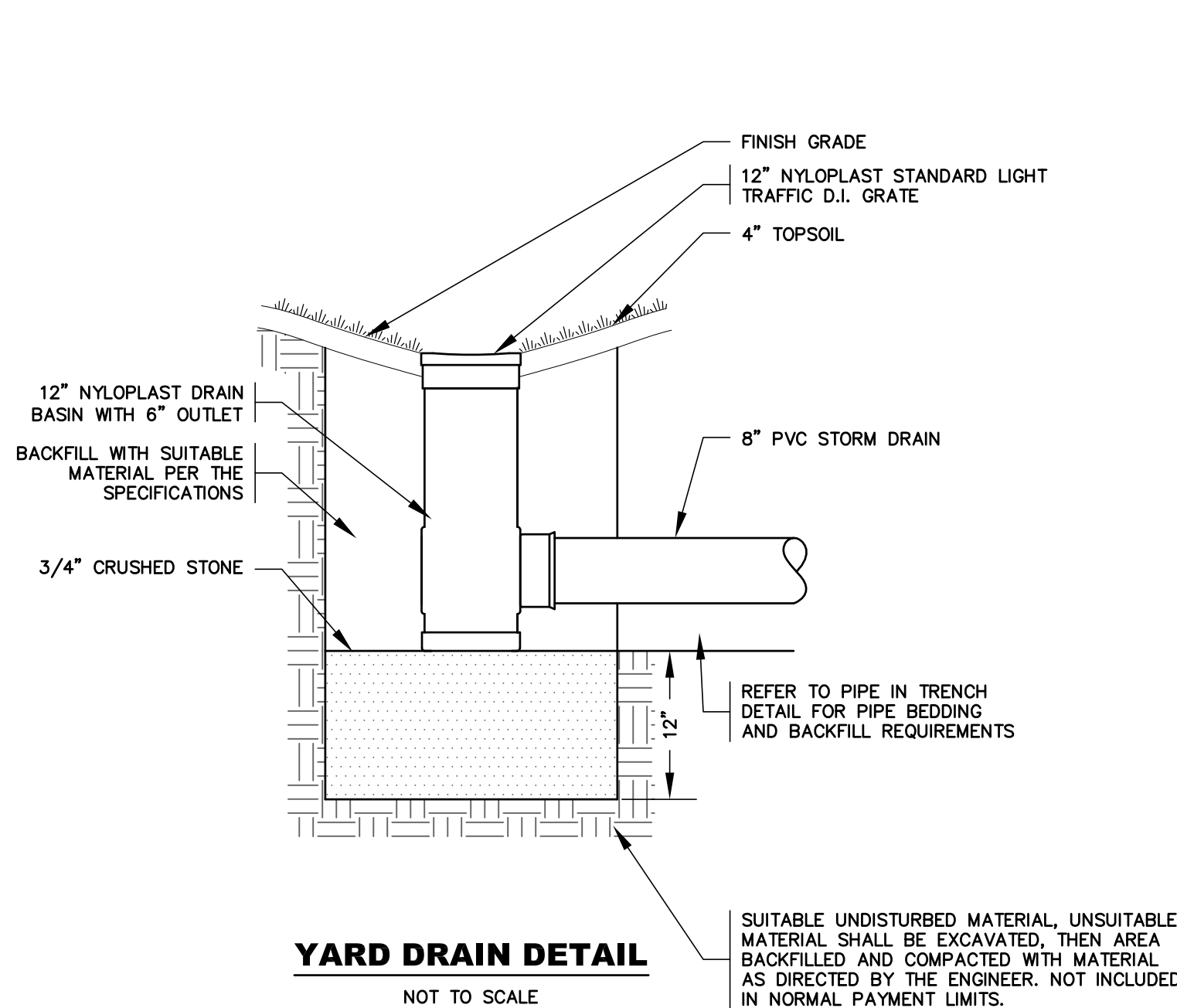
| No. | Date | Description |
|-----|----------|----------------|
| 0 | 1/19/15 | Bulletin 1 |
| 1 | 03/12/15 | Bulletin 4 IFC |

Town Office Building
Town of Middlebury
Middlebury, Vt

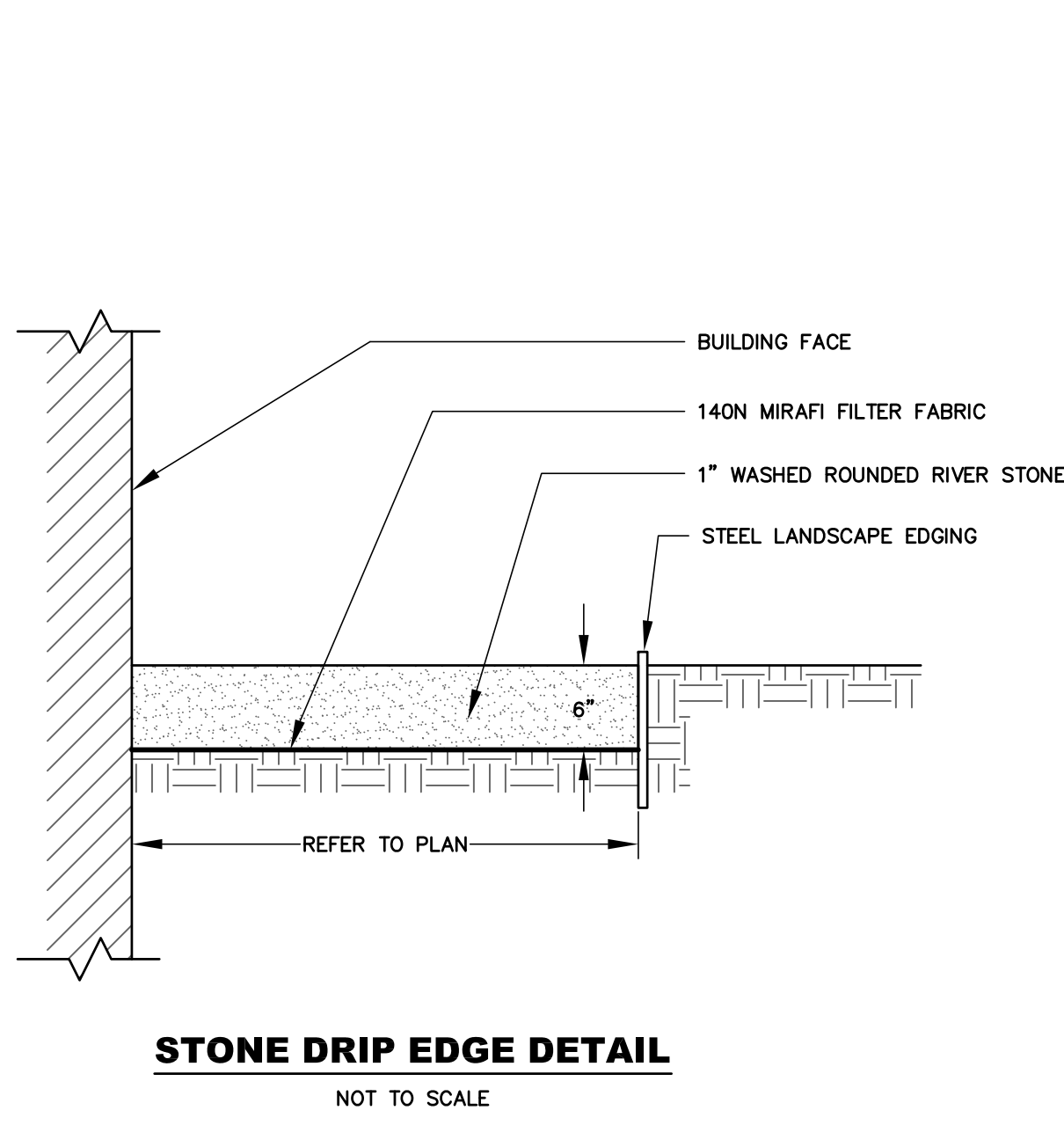
Proj. No: 141.037A Drawn:HB
Date: 11/21/2014 Chk'd: BR

Notes and
Details

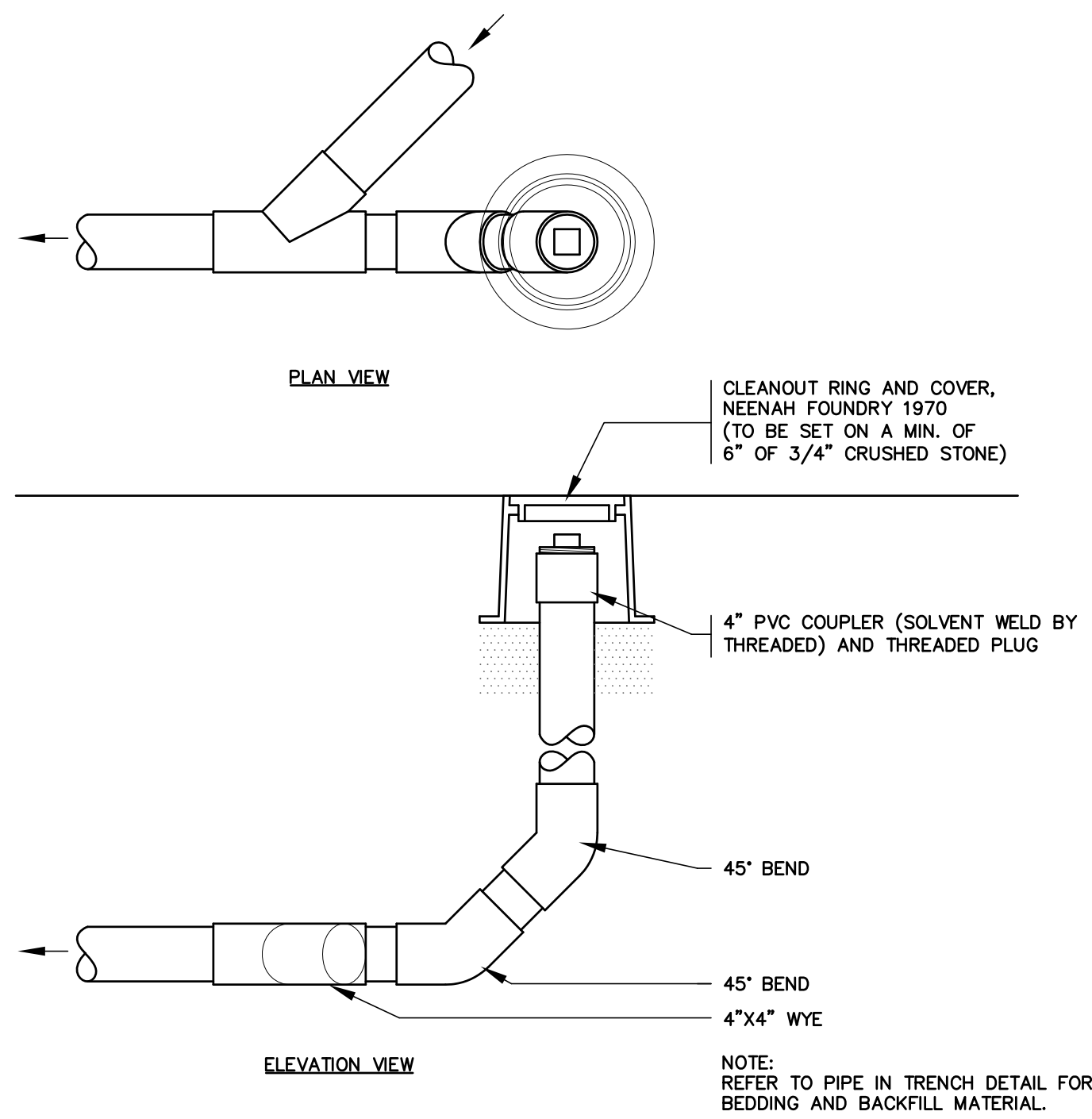
C-2.0



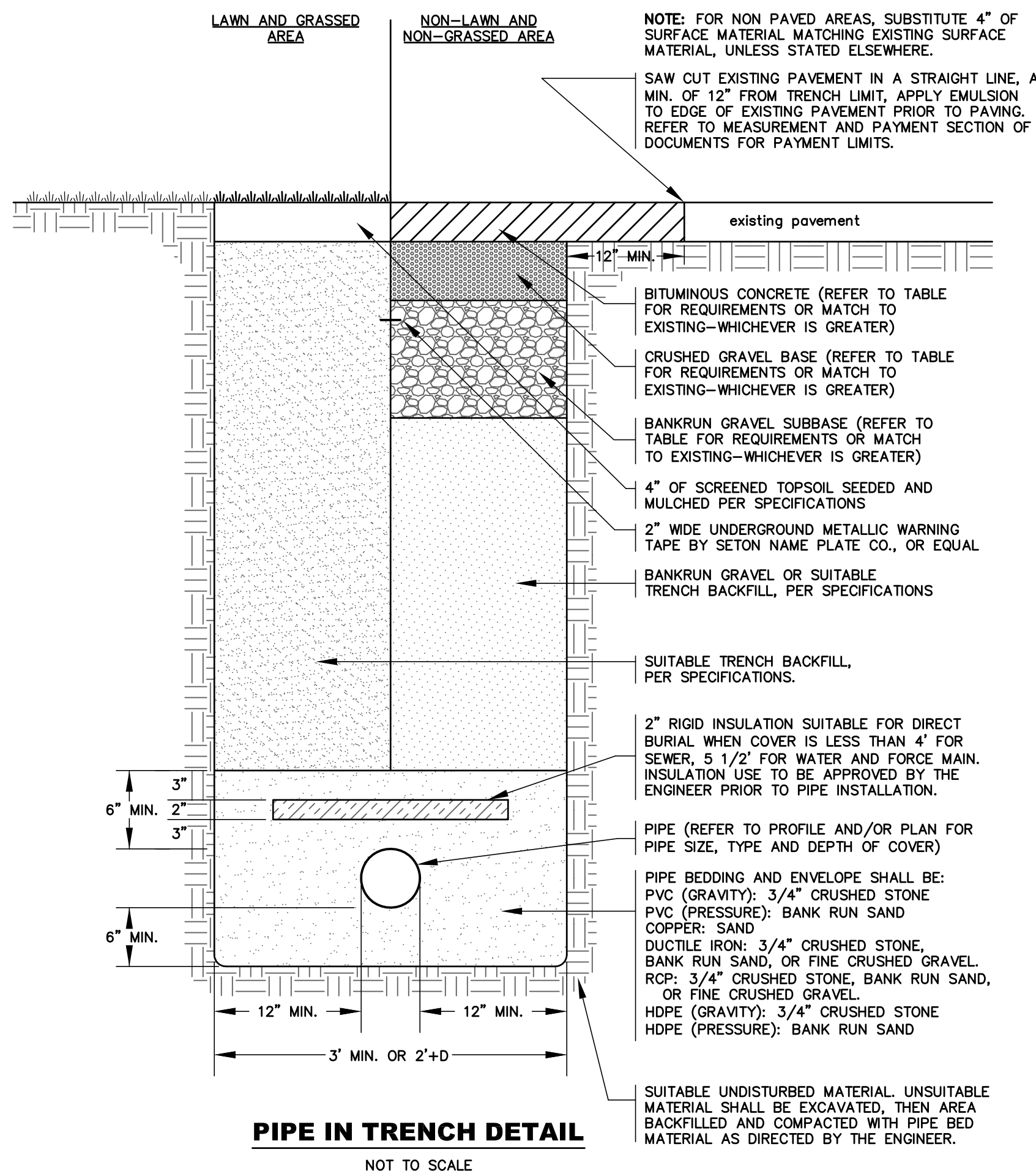
YARD DRAIN DETAIL
NOT TO SCALE



STONE DRIP EDGE DETAIL
NOT TO SCALE

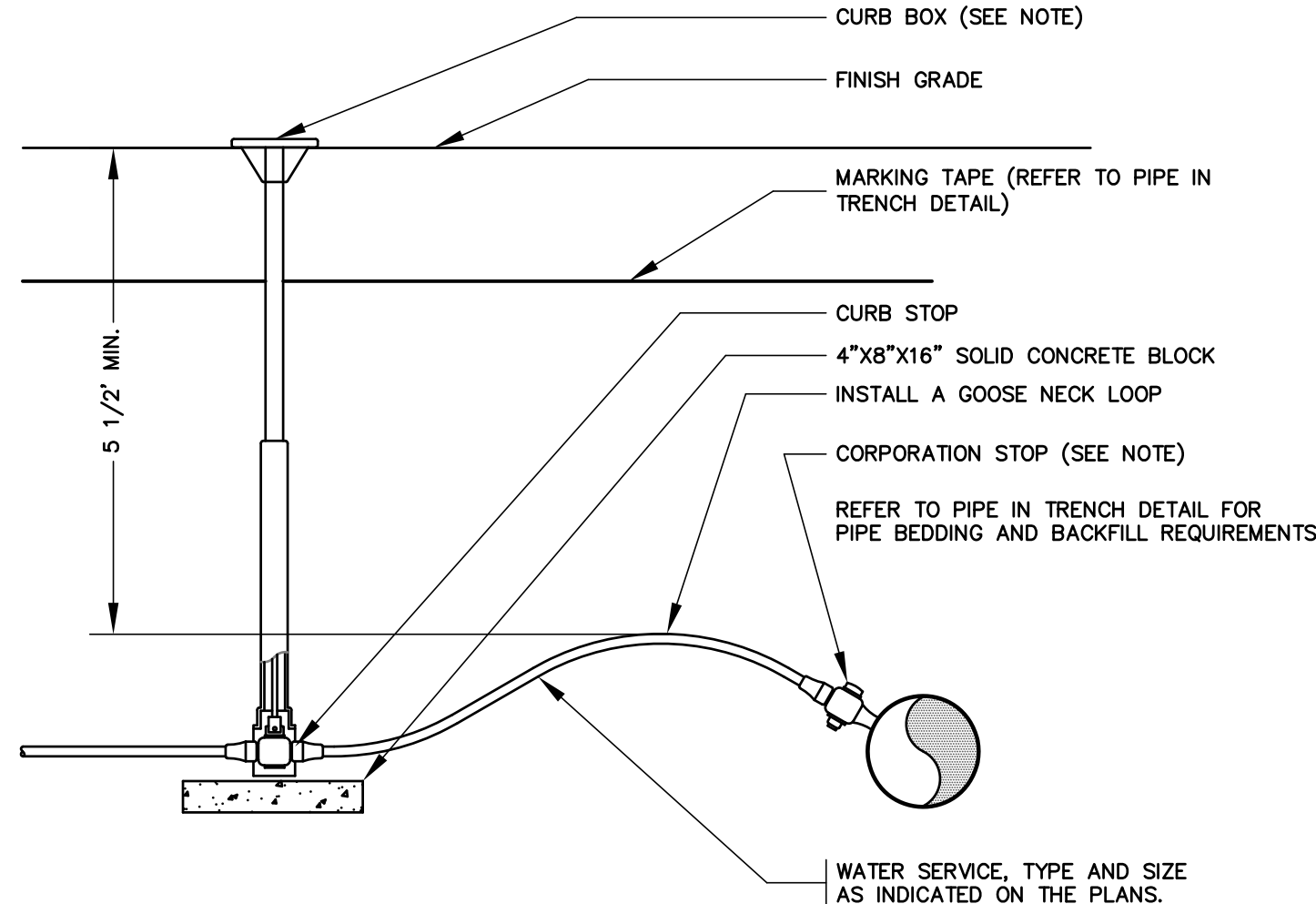


CLEANOUT DETAIL
NOT TO SCALE

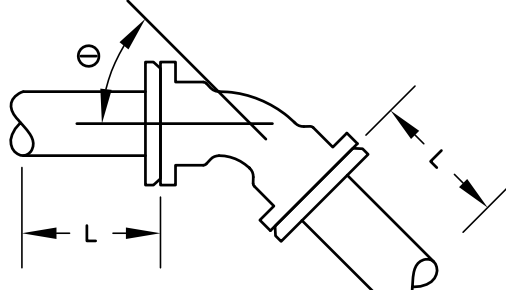
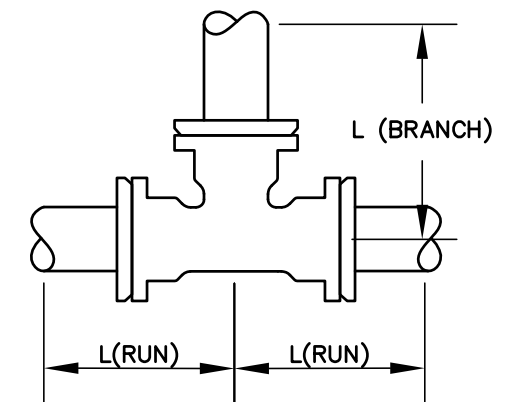
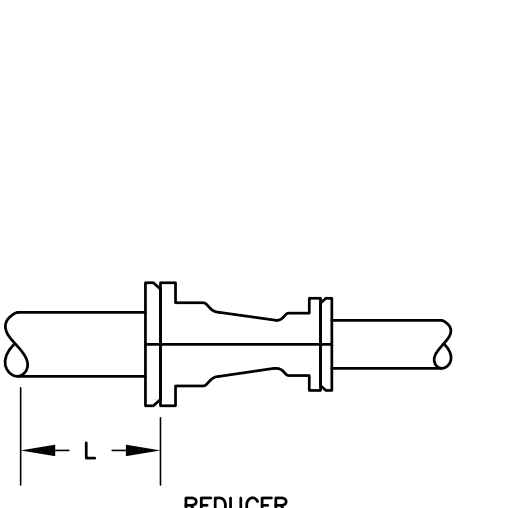
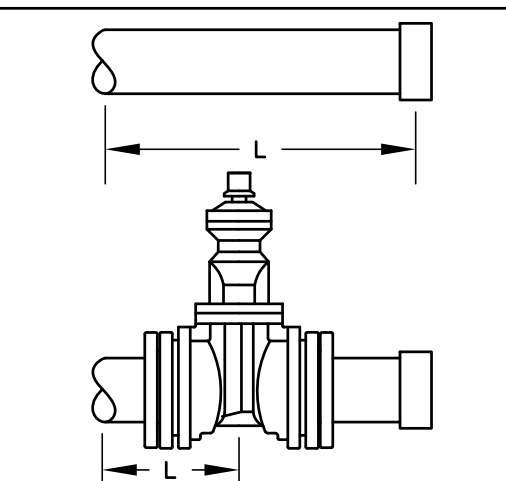
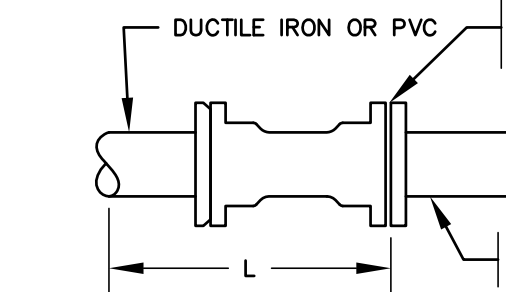


PIPE IN TRENCH DETAIL
NOT TO SCALE

| TRENCH RESTORATION TABLE | | | |
|--------------------------|---|---------------------|-----------------|
| LOCATION | BITUMINOUS PAVEMENT (THICKNESS/TYPE) | CRUSHED GRAVEL BASE | BANKRUN SUBBASE |
| STATE VTRANS | TOP: 1.5"/TYPE 3 (1/2") BASE: 2.5"/TYPE 2 (3/4") | 6" | 18" |
| TOWN ROADS | TOP: 1.5"/TYPE 4 (3/8") BASE: 2.5"/TYPE 2 (3/4") | 6" | 12" |
| PRIVATE/DRIVE | TOP: 1.5"/TYPE 4 (3/8") BASE: 2.5"/TYPE 2 (3/4") | 12" | 0" |



WATER SERVICE DETAIL
NOT TO SCALE

| ASSUMED CONDITIONS: DEPTH 5.5' MIN. SAFETY FACTOR = 1.5 LAYING CONDITION = TYPE 4 18'-0" MIN. PIPE LAY LENGTH | REFERENCED STANDARD: DIPRA DESIGN MANUAL | | DESIGN PRESSURE: 200 PSI | | | | | | | |
|---|---|-----------|-----------------------------|----|----|----|----------------|-----|-----|--|
| | SOIL DESIGNATION: COHESIVE GRANULAR | | POLYWRAP: POLYETHYLENE | | | | | | | |
| | DESCRIPTION | Θ | L (FEET) | | | | | | | |
|  BEND | VERTICAL DOWN BEND | 22 1/2" | 9 | 11 | 15 | 20 | 24 | 28 | 37 | |
| | | 45" | 18 | 22 | 31 | 41 | 50 | 59 | 77 | |
| | VERTICAL UP BEND OR HORIZONTAL BEND | 90" | 44 | 53 | 76 | 99 | 121 | 143 | 186 | |
| | | 11 1/4" | 1 | 1 | 2 | 3 | 3 | 4 | 5 | |
|  TEE | VERTICAL UP BEND OR HORIZONTAL BEND | 22 1/2" | 2 | 3 | 4 | 5 | 6 | 8 | 10 | |
| | | 45" | 5 | 6 | 8 | 11 | 13 | 16 | 21 | |
| | | 90" | 12 | 14 | 21 | 27 | 32 | 38 | 50 | |
| | | SIZE | L (BRANCH) (FEET) | | | | L (RUN) (FEET) | | | |
|  REDUCER | VERTICAL UP BEND OR HORIZONTAL BEND | 4" x 4" | 22 | | | | 10 | | | |
| | | 6" x 4" | 13 | | | | 10 | | | |
| | | 6" x 6" | 38 | | | | 10 | | | |
| | | 8" x 4" | 5 | | | | 10 | | | |
| | | 8" x 6" | 33 | | | | 10 | | | |
| | | 8" x 8" | 56 | | | | 10 | | | |
| | | 10" x 4" | 0 | | | | 10 | | | |
| | | 10" x 6" | 27 | | | | 10 | | | |
| | | 10" x 8" | 51 | | | | 10 | | | |
| | | 10" x 10" | 72 | | | | 10 | | | |
| | | 12" x 4" | 0 | | | | 10 | | | |
| | | 12" x 6" | 21 | | | | 10 | | | |
| | | 12" x 8" | 47 | | | | 10 | | | |
| | | 12" x 10" | 68 | | | | 10 | | | |
| | | 12" x 12" | 88 | | | | 10 | | | |
| | | 16" x 4" | 0 | | | | 10 | | | |
| 16" x 6" | 9 | | | | 10 | | | | | |
| 16" x 8" | 38 | | | | 10 | | | | | |
| 16" x 10" | 61 | | | | 10 | | | | | |
| 16" x 12" | 82 | | | | 10 | | | | | |
| 16" x 16" | 121 | | | | 10 | | | | | |
|  DEAD END CAP OR DEAD END VALVE | VERTICAL UP BEND OR HORIZONTAL BEND | SIZE | L (FEET) | | | | | | | |
| | | 4" x 3" | 13 | | | | | | | |
| | | 6" x 3" | 38 | | | | | | | |
| | | 6" x 4" | 29 | | | | | | | |
| | | 8" x 4" | 53 | | | | | | | |
| | | 8" x 6" | 31 | | | | | | | |
| | | 10" x 4" | 73 | | | | | | | |
| | | 10" x 6" | 55 | | | | | | | |
| | | 10" x 8" | 30 | | | | | | | |
| | | 12" x 4" | 83 | | | | | | | |
| | | 12" x 6" | 78 | | | | | | | |
| | | 12" x 8" | 57 | | | | | | | |
| | | 12" x 10" | 31 | | | | | | | |
| | | 16" x 6" | 118 | | | | | | | |
| | | 16" x 8" | 102 | | | | | | | |
| | | 16" x 10" | 83 | | | | | | | |
| 16" x 12" | 59 | | | | | | | | | |
| 24" x 12" | 150 | | | | | | | | | |
|  RESTRAINED PIPE JOINT DETAIL (200 psi) | VERTICAL UP BEND OR HORIZONTAL BEND | SIZE | L (FEET) | | | | | | | |
| | | 3" | 33 | | | | | | | |
| | | 4" | 40 | | | | | | | |
| | | 6" | 57 | | | | | | | |
| | | 8" | 74 | | | | | | | |
| | | 10" | 90 | | | | | | | |
| | | 12" | 107 | | | | | | | |
| | | 16" | 139 | | | | | | | |
| | | 24" | 203 | | | | | | | |
| | | SIZE | L (FEET) | | | | | | | |
| | | 3" | 40 | | | | | | | |
| | | 4" | 40 | | | | | | | |
| | | 6" | 40 | | | | | | | |
| | | 8" | 40 | | | | | | | |
| | | 10" | 60 | | | | | | | |
| | | 12" | 60 | | | | | | | |
| 16" | 80 | | | | | | | | | |
| 24" | 100 | | | | | | | | | |

NOTE: RESTRAINED PIPE AND FITTING JOINTS SHALL BE PROVIDED FOR ALL PIPE AND FITTING JOINTS WITHIN THE REQUIRED MINIMUM LENGTH (L) OF PIPE, EACH SIDE OF THE FITTING.

RESTRAINED PIPE JOINT DETAIL (200 psi)

NOT TO SCALE

No Revisions This Sheet

ISSUED FOR CONSTRUCTION

Civil Engineer

Otter Creek Engineering, Inc.
P.O. Box 712
404 East Main St.
East Middlebury, VT 05740
(802) 382-8522

Structural Engineer

Sellars Treybal
Structural Engineers PC
145 Pine Haven Shores Rd.
Suite #2091
Shelburne, VT 05482
(802) 497-1174

Mechanical Engineer

Vermont Heating and Ventilating
16 Tigan Street Suite A
Winooski, VT, 05404
800 451 0013

Electrical Engineer

Mike's Electric
338 Boyer Circle Suite 20
Williston, VT, 05495
(802) 988 9678

Fire Protection

North Country Fire Protection
PO Box 2004
Colchester, VT, 05449
(802) 878 6594

© 2015, Bread Loaf Corporation
Seal:



| Revised | | |
|---------|----------|----------------|
| No. | Date | Description |
| 0 | 1/19/15 | Bulletin 1 |
| 1 | 03/12/15 | Bulletin 4 IFC |

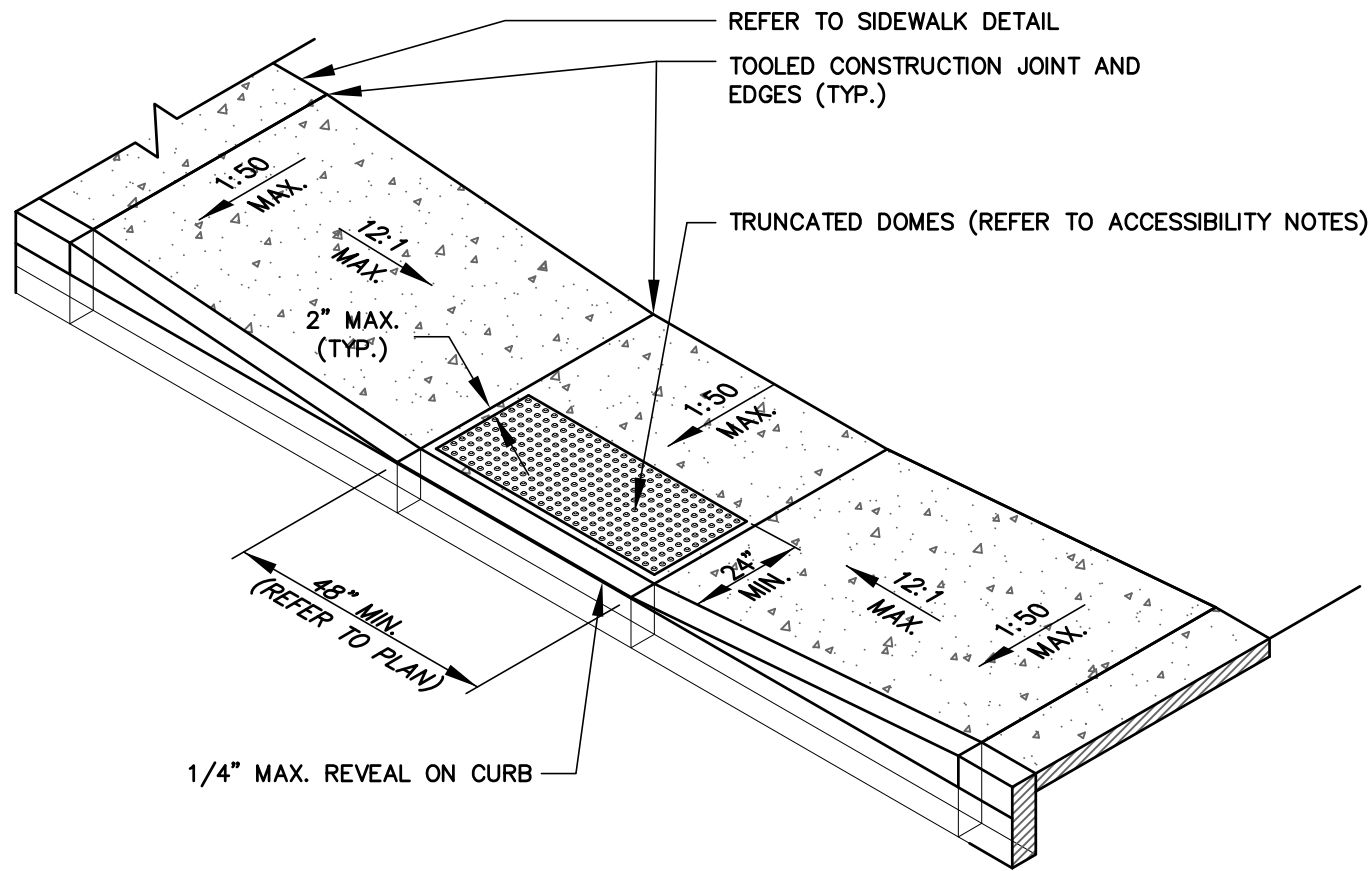
Town Office Building
Town of Middlebury
Middlebury, Vt

Proj. No: 141.037A Drawn:HB
Date: 11/21/2014 Chk'd: BR

Notes and
Details
C-2.1

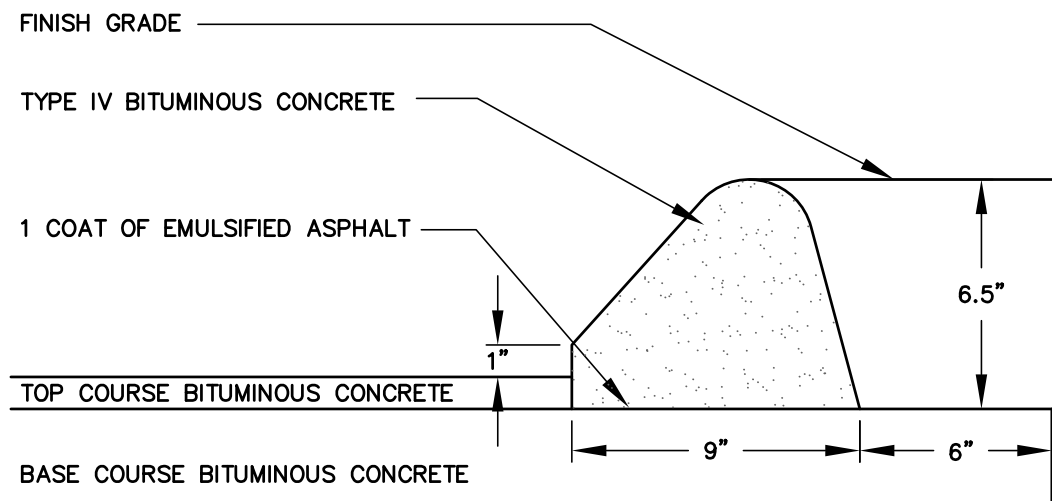
ACCESSIBILITY NOTES:

1. ALL LANDINGS SHALL HAVE MAXIMUM CROSS SLOPE NOT EXCEEDING 2%.
2. ALL WALKS, RAMPS AND CROSSWALKS SHALL HAVE MAXIMUM CROSS SLOPES NOT EXCEEDING 2%.
3. ALL RAMPS SHALL HAVE MAXIMUM LONGITUDINAL SLOPE NOT TO EXCEED 12:1.
4. ALL WALKS NOT NOTED AS "RAMPS" SHALL HAVE MAXIMUM LONGITUDINAL SLOPE NOT TO EXCEED 20:1 (5%). (ACCESSIBLE ROUTE)
5. ACCESSIBLE PARKING SPACES AND DROP OFF AREAS SHALL HAVE MAXIMUM SLOPE NOT TO EXCEED 2% IN ALL DIRECTIONS.
6. REFER TO PLAN FOR LOCATIONS OF TRUNCATED DOMES.



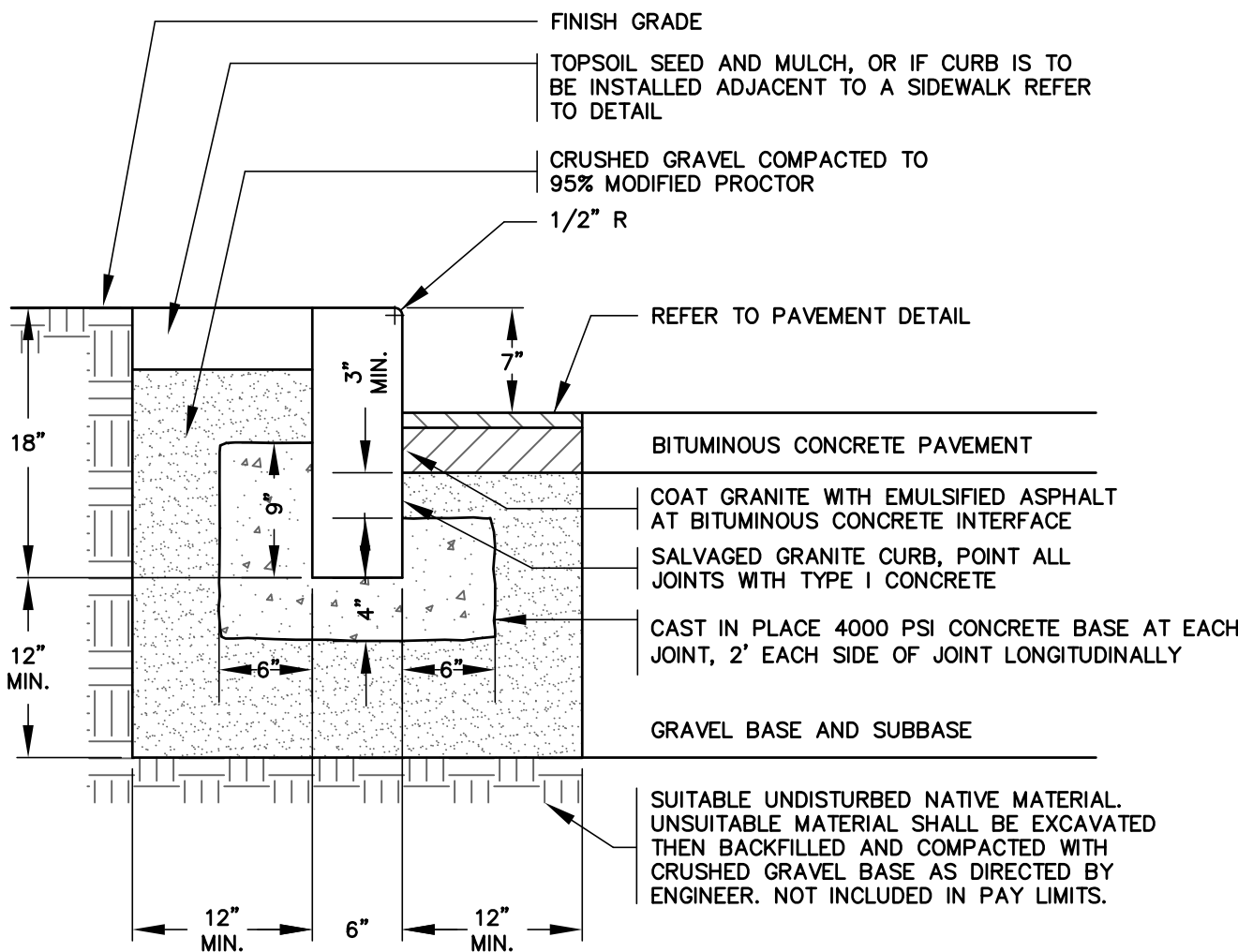
INLINE ADA ACCESSIBLE SIDEWALK RAMP DETAIL

NOT TO SCALE



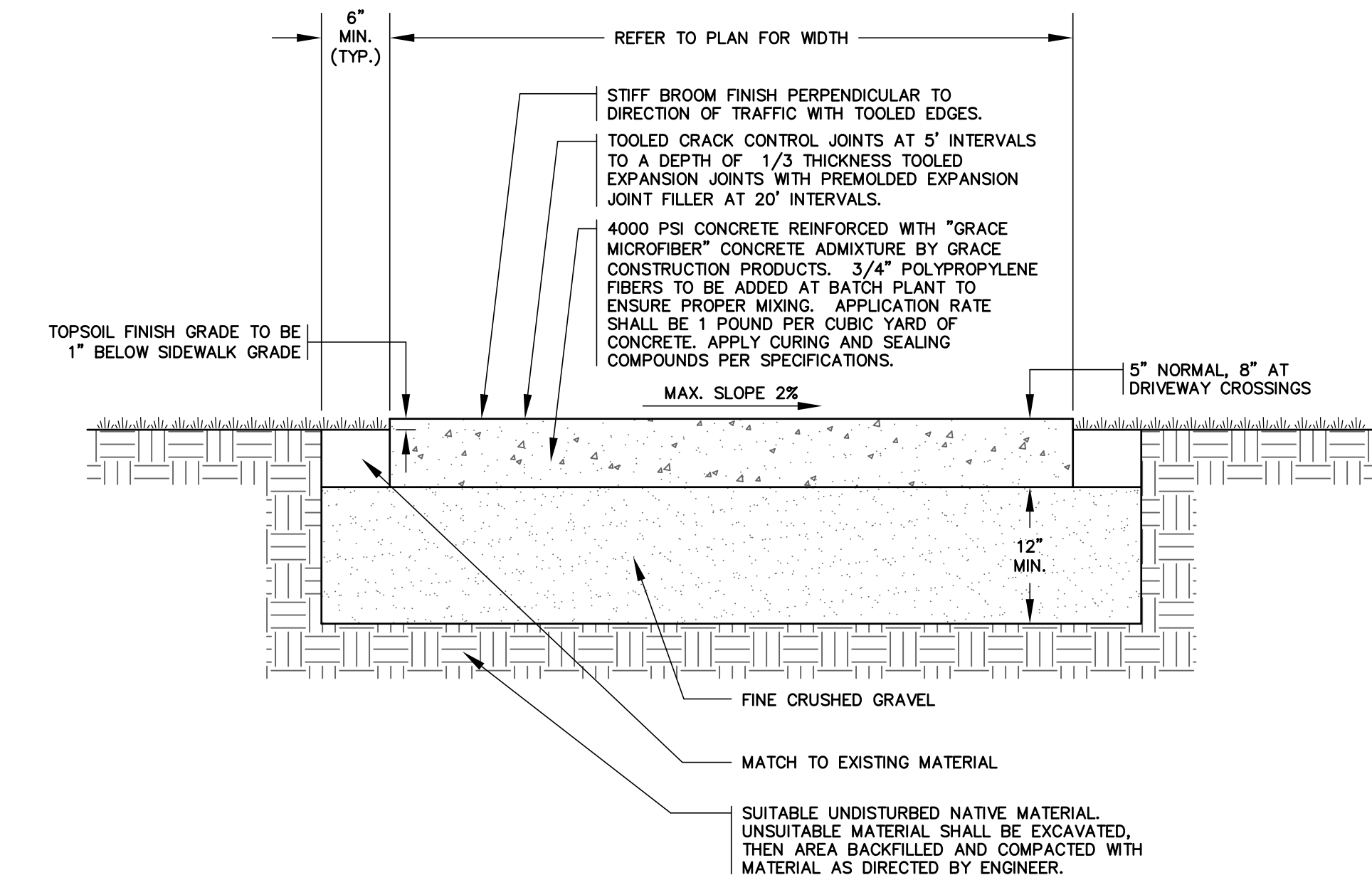
BITUMINOUS CONCRETE CURB DETAIL

NOT TO SCALE



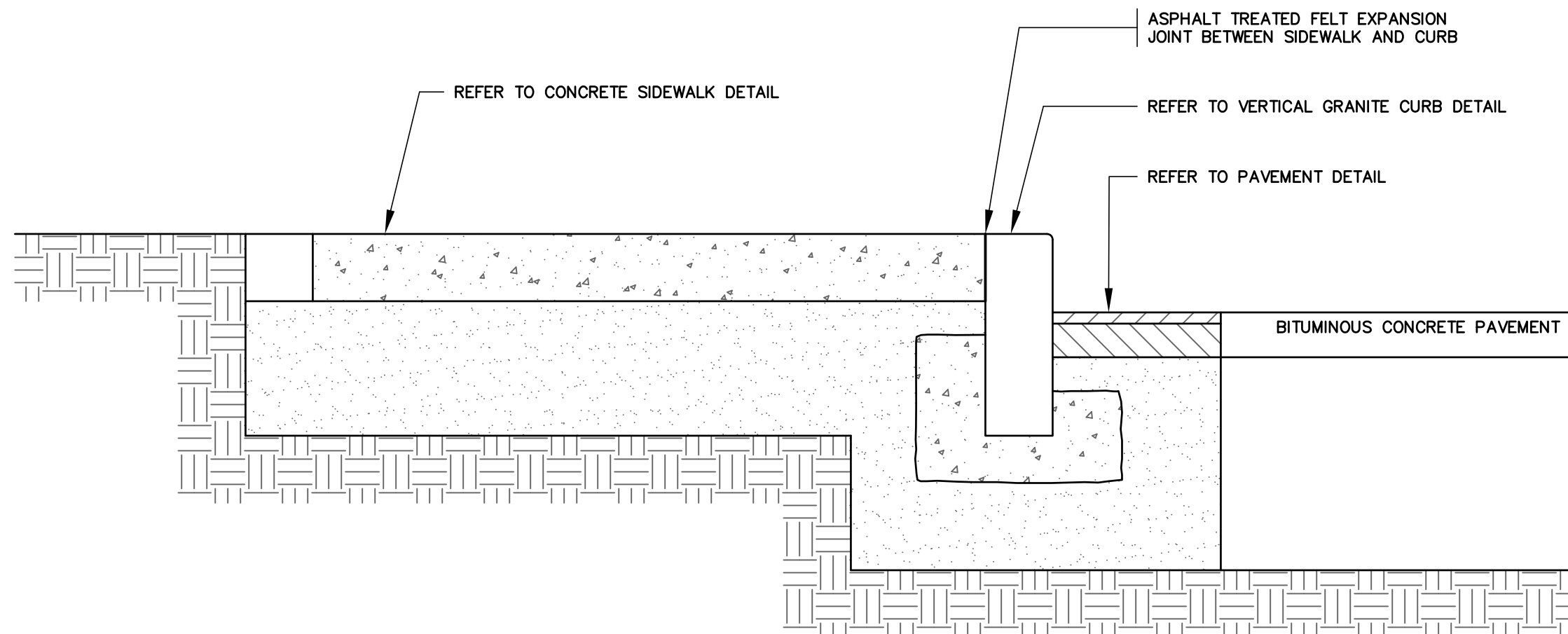
VERTICAL GRANITE CURB DETAIL

NOT TO SCALE



CONCRETE SIDEWALK DETAIL

NOT TO SCALE



CONCRETE SIDEWALK AND CURB DETAIL

NOT TO SCALE

NOTE:
PROVIDE TOTAL ASPHALT DEPTH OF 4" OR MATCH EXISTING DEPTH WHICHEVER IS GREATER.

PAVEMENT PATCH DETAIL

NOT TO SCALE

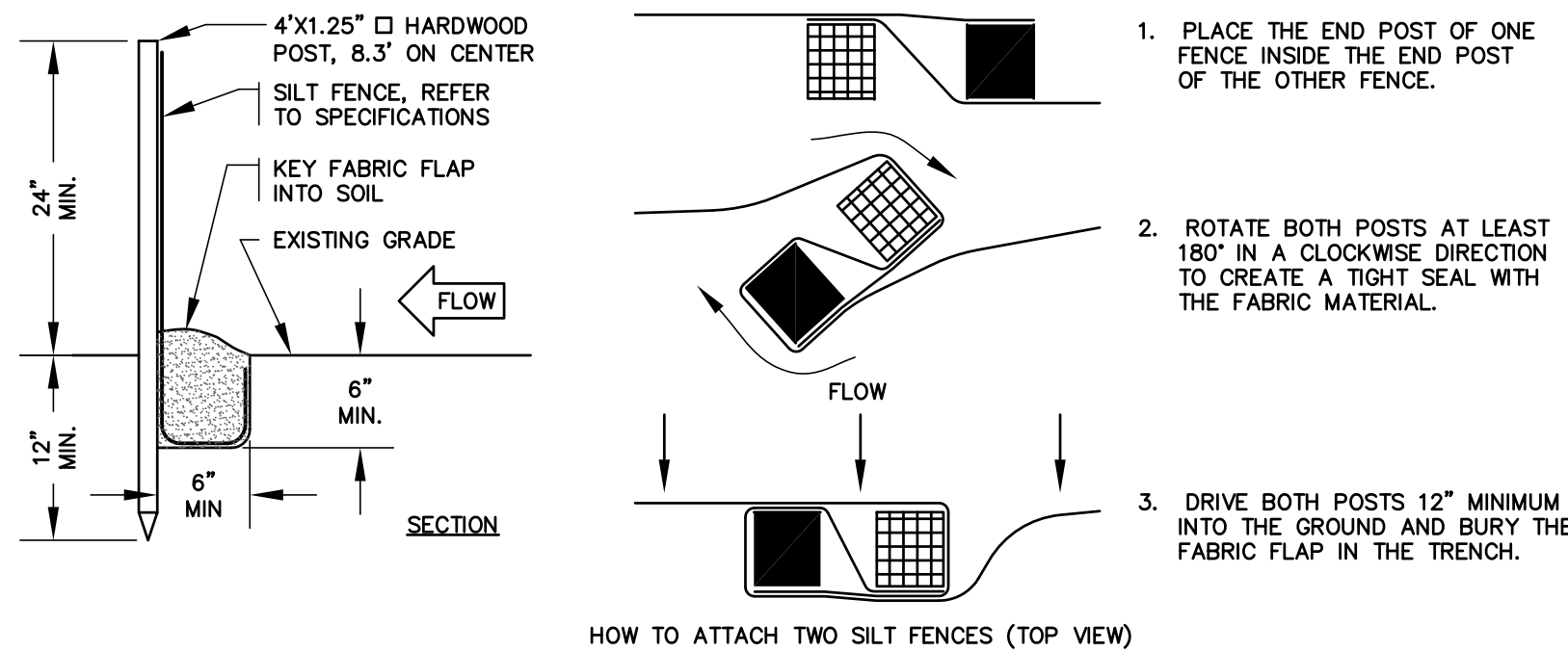
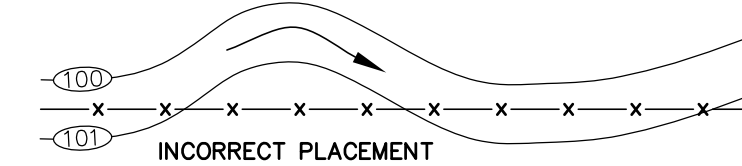
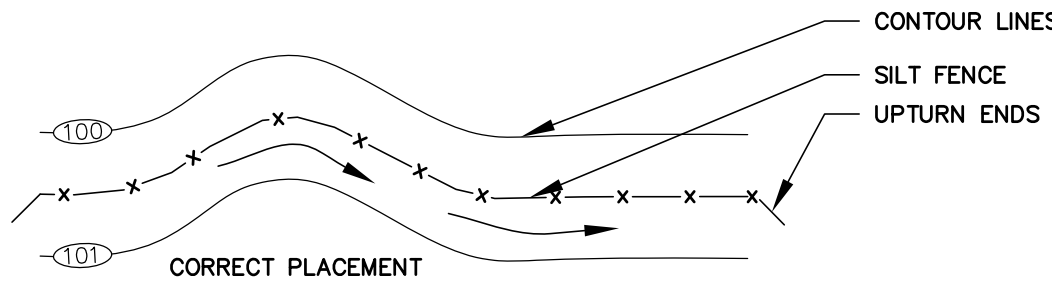
SAFETY NOTES

1. CONTRACTOR SHALL BE RESPONSIBLE FOR INITIATING, MAINTAINING AND SUPERVISING ALL WORK SAFETY PRECAUTIONS AND PROGRAMS IN CONNECTION WITH THE WORK. CONTRACTOR SHALL TAKE ALL NECESSARY PRECAUTIONS TO PREVENT DAMAGE, INJURY OR LOSS TO:
 - A. ALL EMPLOYEES ON THE WORK SITE AND OTHER PERSONS WHO MAY BE AFFECTED.
 - B. THE WORK SITE AND ALL THE MATERIALS AND EQUIPMENT TO BE INCORPORATED WHETHER IN STORAGE ON OR OFF THE SITE.
 - C. OTHER PROPERTY AT THE SITE OR ADJACENT, INCLUDING BUT NOT LIMITED TO TREES, SHRUBS, LAWNS, WALKS, PAVEMENTS, ROADWAYS, STRUCTURES AND UTILITIES NOT DESIGNATED FOR REMOVAL, RELOCATION, OR REPLACEMENT IN THE COURSE OF CONSTRUCTION.
2. CONTRACTOR SHALL COMPLY WITH ALL APPLICABLE LAWS, ORDINANCES, RULES, REGULATIONS AND ORDERS (INCLUDING O.S.H.A. REGULATIONS) OF ANY PUBLIC BODY HAVING JURISDICTION OVER THE SAFETY OF PERSONS OR PROPERTY.
3. THE CONTRACTOR SHALL NOTIFY OWNERS OF ADJACENT PROPERTY AND UTILITIES WHEN EXECUTION OF THE WORK WILL AFFECT THEM.
4. THE CONTRACTOR'S DUTIES AND RESPONSIBILITIES FOR THE SAFETY AND PROTECTION OF THE WORK SHALL CONTINUE UNTIL SUCH TIME AS ALL THE WORK IS COMPLETED.
5. THE LOCATION OF EXISTING UNDERGROUND UTILITIES ARE SHOWN IN AN APPROXIMATE WAY ONLY AND HAVE NOT BEEN INDEPENDENTLY VERIFIED BY THE OWNER OR ITS REPRESENTATIVE. THE CONTRACTOR SHALL DETERMINE THE EXACT LOCATION OF ALL EXISTING UTILITIES BEFORE COMMENCING WORK, AND AGREES TO BE FULLY RESPONSIBLE FOR ANY AND ALL DAMAGES WHICH OCCUR BY THE CONTRACTOR'S FAILURE TO EXACTLY LOCATE AND PRESERVE ANY AND ALL UNDERGROUND UTILITIES.
6. CONTRACTOR SHALL COORDINATE WITH DIG-SAFE (888)-344-7233 OR WWW.DIGSAFE.COM A MINIMUM OF 48 HOURS PRIOR TO PERFORMING ANY EXCAVATION.
7. AT THE CLOSE OF EACH WORK DAY, THE CONTRACTOR SHALL BACKFILL OR ADEQUATELY BARRICADE ALL OPEN TRENCHES.

EROSION CONTROL NOTES:

1. THE PROJECT IS NOT REQUIRED TO OBTAIN COVERAGE UNDER THE STATE OF VERMONT'S CONSTRUCTION GENERAL PERMIT (3-9020).
2. THE CONTRACTOR IS RESPONSIBLE FOR COMPLIANCE WITH THE STATE OF VERMONT WATER QUALITY STANDARDS. ANY FINES ASSESSED BY REGULATORY AGENCIES FOR THE NONCOMPLIANCE WITH STATE WATER QUALITY STANDARDS SHALL BE THE RESPONSIBILITY OF THE CONTRACTOR. THE CONTRACTOR IS RESPONSIBLE FOR PROVIDING THE PERSONNEL REQUIRED TO INSPECT AND MAINTAIN EROSION PREVENTION AND SEDIMENT CONTROL BEST MANAGEMENT PRACTICES (BMPs) FOR THIS PROJECT.
3. THE EROSION PREVENTION AND SEDIMENT CONTROL MEASURES SHOWN ON THE PLANS DO NOT RELIEVE THE CONTRACTOR'S RESPONSIBILITY TO OBSERVE, EVALUATE AND CONSIDER ALTERNATIVES AND TO PROPOSE APPROPRIATE RECOMMENDATIONS IN ORDER TO LIMIT POTENTIAL WATER QUALITY IMPACTS.
4. EROSION CONTROL MEASURES SHALL BE MONITORED AND MAINTAINED THROUGHOUT CONSTRUCTION AND REMOVED AFTER PROJECT AREA AND DRAINAGE COURSES ARE FULLY ESTABLISHED AND STABLE.
5. ALL DISTURBED AREAS NOT UNDER ACTIVE CONSTRUCTION SHALL BE STABILIZED BY ROUGH GRADING TO MINIMIZE SLOPES AND MULCHED. FOLLOWING FINAL GRADING OF ANY PORTION OF THE SITE, CONTRACTOR SHALL LOAM, SEED AND MULCH WITHIN ONE WEEK.
6. REFER TO CONTRACT SPECIFICATIONS AND DETAILS FOR ADDITIONAL INFORMATION.
7. THE CONTRACTOR SHALL INSTALL INLET PROTECTION ON ALL CATCH BASINS WITHIN 100 FEET DOWN GRADIENT OF THE ACTIVELY WORKED CONSTRUCTION AREA. INLET PROTECTION BEST MANAGEMENT PRACTICES SHALL BE INSTALLED PRIOR TO THE START OF WORK AND IN ACCORDANCE WITH MANUFACTURER'S RECOMMENDATIONS.

SILT FENCE SHOULD BE INSTALLED PARALLEL TO THE GROUND CONTOUR IN 100' SECTIONS (MAXIMUM)



- NOTES:
1. SILT FENCE SHALL BE INSTALLED AT THE DOWNHILL SIDE OF CONSTRUCTION ACTIVITIES BEFORE UPSLOPE LAND DISTURBANCE BEGINS.
 2. REFER TO TECHNICAL SPECIFICATIONS FOR ADDITIONAL INFORMATION.

SILT FENCE DETAIL

NOT TO SCALE

No Revisions This Sheet

ISSUED FOR CONSTRUCTION