



Isley Public Library Renovation Expansion Project August 9, 2023



2014-2017 Library Building Committee



Town Administration and Staff

Professional Advisory Group



AGENDA

- BACKGROUND
 - NEED
 - PROCESS
- PRESENTATIONS: 1) gbA 2) VIA 3) WLA - ReArch
- COMMUNITY INPUT
- NEXT STEPS
- INTERACTION

THE LIBRARY IS A COMMUNITY CENTER FOR ALL



Community members marching with the library at the 2023 Memorial Day Parade.

HOW DOES THE LIBRARY BENEFIT OUR COMMUNITY?

SPACES

- Community Meetings
- “Third Space”
- Heating/Cooling/Restrooms
- Remote work/Distance Learning

PROGRAMS

- Teach New Skills
- Promote Literacy
- Social Connections
- Learn New Subjects
- Have Fun!

SERVICES

- Reference Help
- Tech Help
- Readers Advisory
- Notary Public

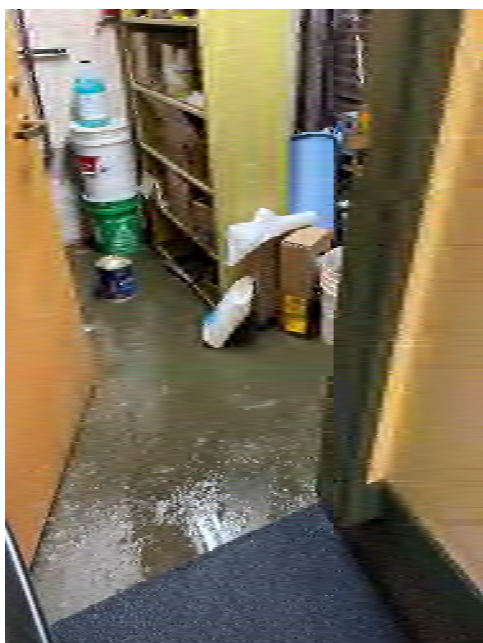
RESOURCES

- Circulating Collection
- High-speed Internet
- Scanning and Faxing
- “Library of Things”

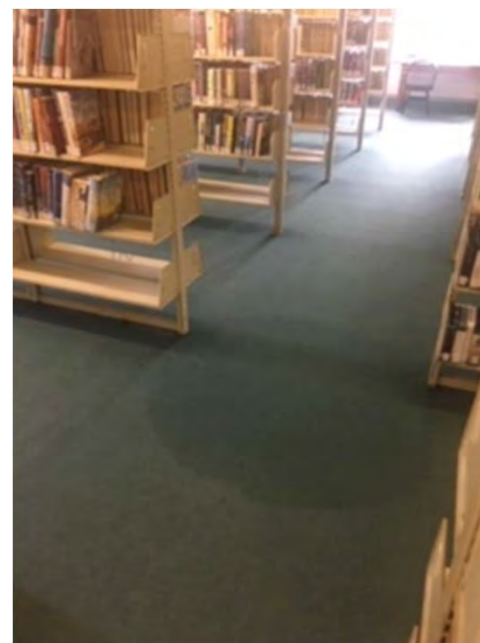
HOW DOES THE LIBRARY BENEFIT OUR COMMUNITY?

books audiobooks dvds story times
youth media lab tome talks ebooks teen
advisory group chess club classic film
club book sales craft tables cribbage
paint nights MCTV First Wednesdays
composting workshops first aid trainings
writers' workshops otter creek poets
author talks science cafe story time en
español media lab puzzles newspapers
teen programs magazines bathrooms
summer reading programs LEGO club
free wi-fi study rooms library of things
museum + park passes play area
supervised visits study areas air
conditioning heat e-bikes notary public
sewing classes friendly faces

WHY DO WE NEED A NEW LIBRARY BUILDING?



Flooding in the basement (Youth Room closet).



Leaks in the ceiling (adult fiction stacks).

WHY DO WE NEED A NEW LIBRARY BUILDING?



An AC unit that is so old the parts are no longer available for servicing.



The library's aging boiler.

WHY DO WE NEED A NEW LIBRARY BUILDING?



Our unreliable and unwelcoming elevator.



The cramped and crowded Youth Services Offices are located in a former stairwell.

VISION FOR A NEW LIBRARY BUILDING

The new Ilsley Public Library will be a **welcoming, accessible, and safe community hub** with the **flexibility** and **sustainability** to enrich community members' lives now and into the future.



The original 1924 building. Photo by Caleb Kenna.

WHAT YOU'VE SAID YOU NEED IN YOUR PUBLIC LIBRARY

- Multiple, modern meeting rooms for local groups and public events
- A safe and healthy environment for children and expanded youth services programming
- A safe and welcoming place for teens to gather after school
- Safe, family-oriented bathrooms
- Easier, intuitive access to shelved books
- Quiet study/reading areas and better noise-proofing
- Improved outdoor library space
- A centerpiece of downtown life that enhances the vitality of our town



The library's annual "Countdown to Noon Year!" event, December 2022.

AN EXPANDED LIBRARY WILL INCLUDE...

- Community meeting rooms of varying size
- Double the space for pre-K and kindergarten, elementary school, and middle school
- A dedicated space for high school students
- Improved adult reading areas
- Adult and youth activity areas
- Improved public and family restrooms
- Improved staff and storage areas



Community members gathering at the library!

RENOVATION/EXPANSION PROCESS

Ilseley 100 Project Team

- 2014 Selectboard and library Trustees form Library Building Committee to work with architects on new library design – delivered in 2017
- 2018 Tell Me Tours
- 2021 Trustees develop building vision statement; Selectboard strikes Working Group
- 2022 Selectboard charges Ilseley 100 Project Team



ILSLEY 100 PROJECT TEAM – March 2022-August 2023

- Studied best practices
- Visited other libraries in Vermont
- Assessed space needs
- Examined location/space options
- Determined rough costs
- Engaged in two rounds of public feedback



OPTIONS: OVERVIEW

Ilsey 100 Project Team



OPTION A: RENOVATE CURRENT BUILDING



OPTION C: RENOVATE & ADD ANNEX



OPTION B: RENOVATE & EXPAND



OPTION D: BUILD NEW



ILSLEY LIBRARY, MIDDLEBURY, VERMONT. 11

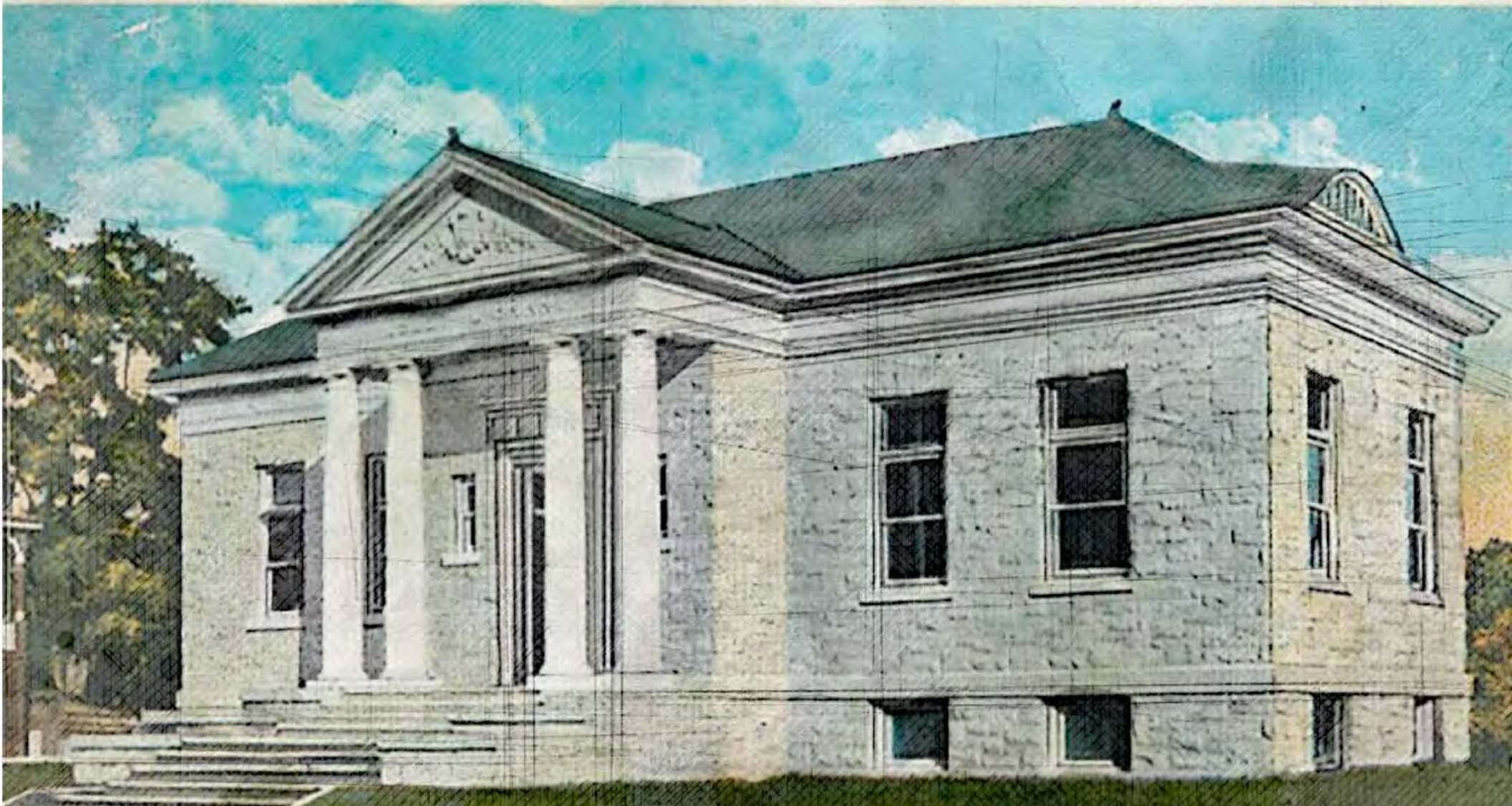




Image courtesy of gbA

Putting an addition on an historic building



Image courtesy of VIA

Putting an addition on an historic building

Image courtesy of gbA



Conceptual design



FUTURE point of view



MIDDLEBURY 2050 ?



Other perspectives

gbA

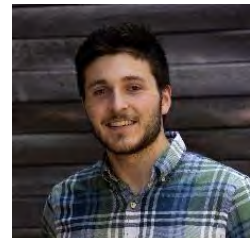




RENOVATION &
EXPANSION OF
THE HISTORIC
**ILSLEY PUBLIC
LIBRARY**



gbArchitecture



gbArchitecture



CVUUS Church
Middlebury, Vermont



One Taylor Housing and Transportation Center,
Montpelier, Vermont



Anglo American School of Sofia
Sofia, Bulgaria



Montpelier District Heat Plant,
Montpelier, VT



Kellogg Hubbard Library
Montpelier, VT



Co-op Plaza Redevelopment
Brattleboro, VT



Littleton Food Coop
Littleton, NH



Capstone Community Action, Barre, VT

gbArchitecture

ONE TAYLOR HOUSING AND TRANSPORTATION CENTER

2021 AIA VT Excellence in Architecture—Honors

CVUUS CHURCH

2021 AIA VT Excellence in Architecture - Citation

ANGLO AMERICAN SCHOOL OF SOFIA - PERFORMING & VISUAL ARTS CENTER

2019 Bulgarian Green Building of the Year -
Schools Category

2019 AIA VT Excellence in Architecture - Merit

2019 AIA VT Excellence in Architecture - Peers
Choice

2019 USGBC LEED Gold

LITTLETON FOOD COOPERATIVE

2018 AIA NH Excellence in Architecture

2017 AIA VT Excellence in Architecture

RED CLOVER COMMONS AFFORDABLE HOUSING

2018 NGBS Silver Certification

2018 AIA VT Excellence in Architecture Peers
Choice

58 BARRE STREET SENIOR HOUSING & COMMUNITY CENTER

2016 USGBC LEED Platinum

NORTHFIELD SAVINGS BANK OPERATIONS CENTER

2016 Efficiency Vermont Design Award

BRATTLEBORO CO-OP PLAZA REDEVELOPMENT

2015 AIA/HUD Secretary's Award for Creating
Community

2015 AIAVT Award for Excellence in Architecture

2012 EPA National Award for Smart Growth

FIRM AWARDS

U32 MIDDLE & HIGH SCHOOL

2015 EPA's Vermont Energy Star School

MONTPELIER DISTRICT HEAT PLANT

2014 AIA VT Excellence in Architecture Award

CAPSTONE COMMUNITY ACTION

2014 AIA VT Excellence in Architecture Award

VSECU RUTLAND BRANCH — *LEED Gold*

2013 Efficiency Vermont Design Award

GILE HOUSING — *LEED Gold*

2011 AIA VT Excellence in Architecture Award

NAMCO BLOCK

2012 Governors Award for Environmental
Excellence

2012 Efficiency Vermont Design Award

2011 John M. Clancy Award for Socially
Responsible Housing

2010 AIA VT Excellence in Architecture Honor
Award

gbA OFFICES

2012 AIA New England Excellence in Architecture
Award

2010 AIA Vermont Excellence in Architecture
Award

2002 Best Overall Integrated Solution, Efficiency
Vermont Conference

PRIVATE RESIDENCE

2010 AIA VT Award for Excellence in Architecture

BEMIS BLOCK

2007 AIA VT Award for Excellence in Architecture

WHITE BAUX STUDIO

LIBRARY DESIGN CONSULTING

White Baux Studio is a National design consulting firm with library specific experience in programming, planning and interior design. The work experience is across the nation - California, Idaho, Arizona, Oklahoma, Illinois and Delaware.

WBS is working internationally as a Design Consultant for the US State Department Embassy Design Excellence program. Recently completed work examples in India, Mexico and Brazil.

- Programming, Visioning + Goal Setting
- Scenario Planning
- Test Fit + Space Planning
- Service Model Diagrams and Mapping Workflow
- WELL mapping







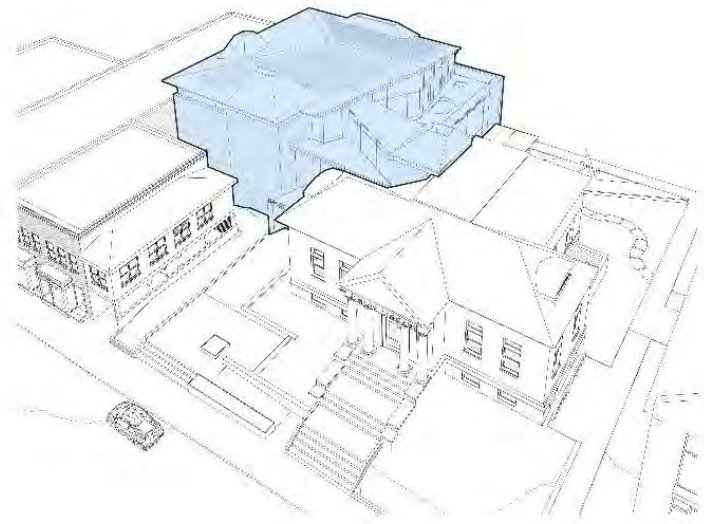
CONCEPT:

A FLEXIBLE CONTAINER THAT CELEBRATES AND HONORS THE BEAUTY OF THE HISTORIC STRUCTURE WHILE ACTIVATING THE SURROUNDING SPACES and PERFORMING EXCEPTIONALLY - NOW AND INTO THE FUTURE.



53% OF THE 1924 FAÇADE IS
CONCEALED BY PREVIOUS ADDITIONS

EXISTING



100% OF THE 1924 FAÇADE IS VISIBLE
WITH THE PROPOSED ADDITION

PROPOSED

CONNECTOR:

- COMMUNITY HUB
- VISUAL CONNECTION FROM CIRCULATION DESK TO BOTH ENTRIES
- “SURPRISE” VIEW OF HISTORIC STRUCTURE FROM WITHIN
- ACCESS TO ALL LEVELS



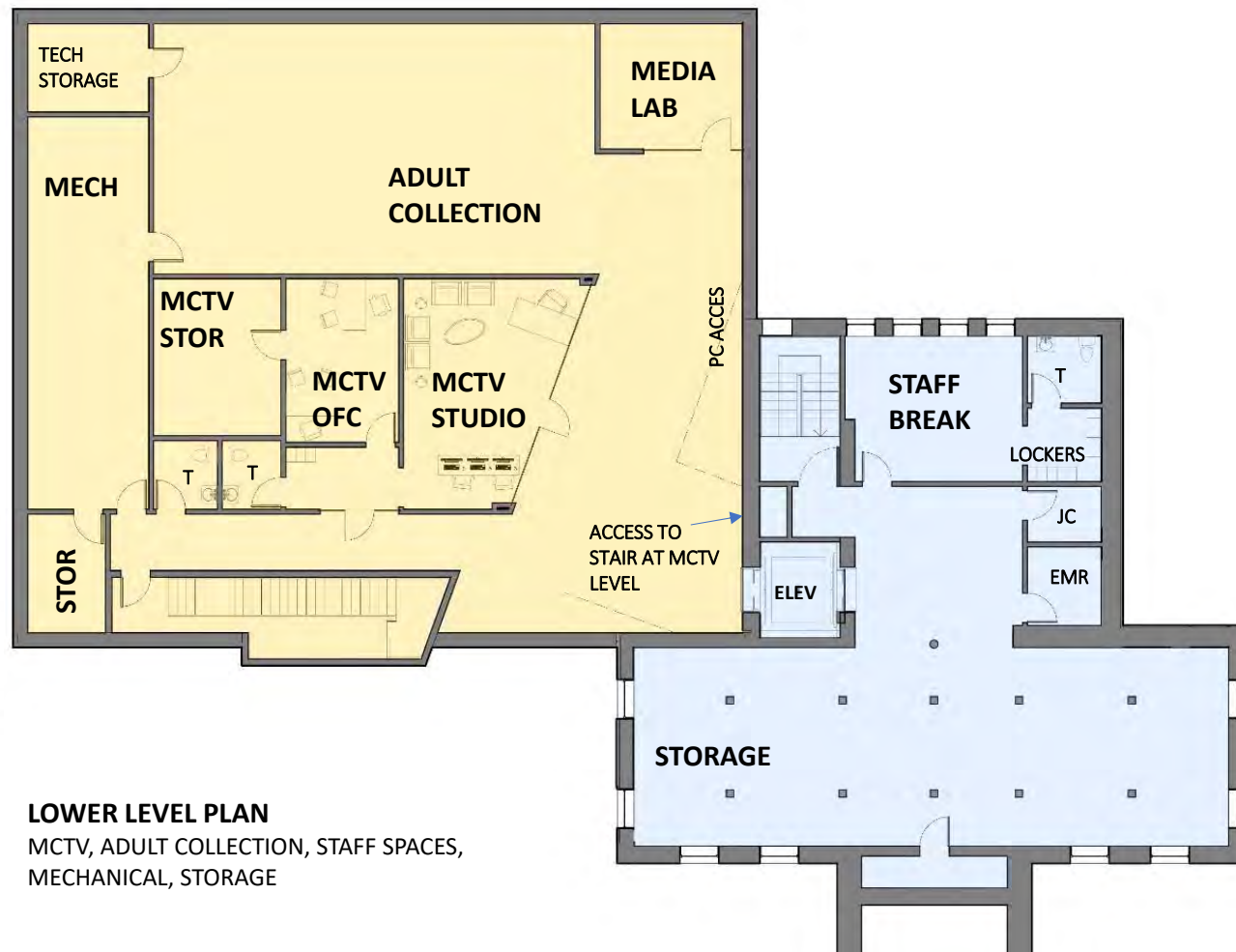
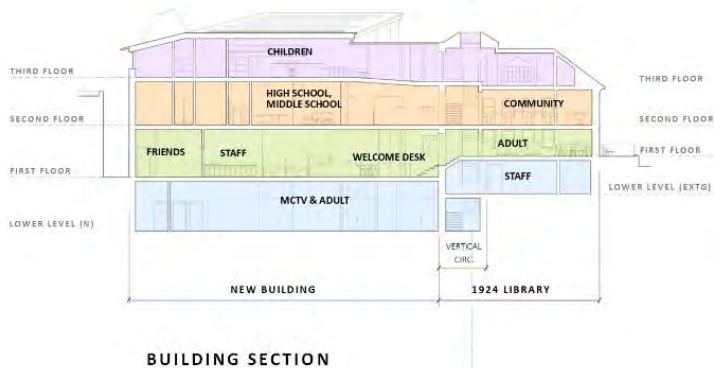
IDEA + INTENTION

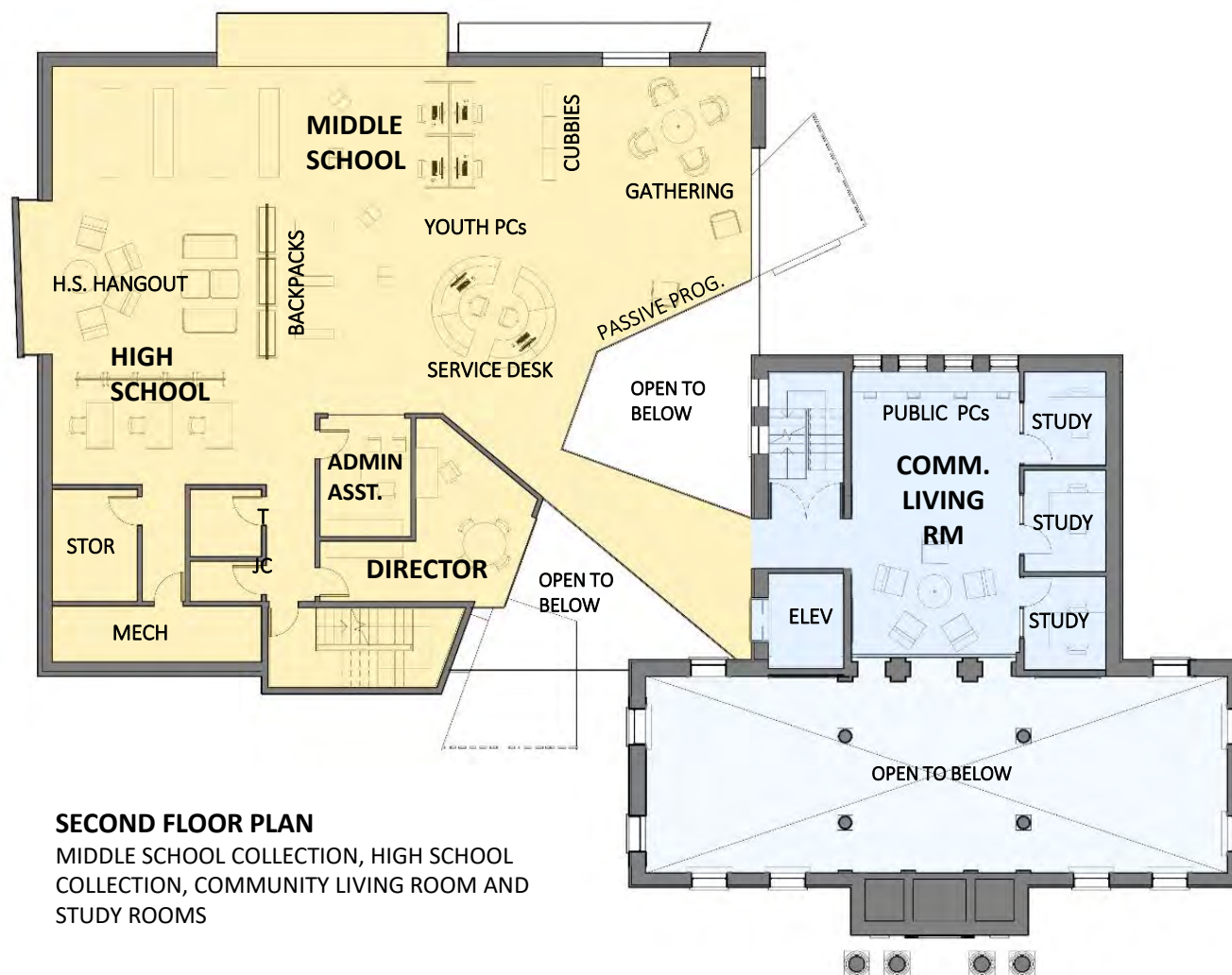




FIRST FLOOR
COMMUNITY HUB,
COMMUNITY SPACES,
FRIENDS, ADULT READING
AND GATHERING, STAFF

01 FIRST FLOOR PLAN

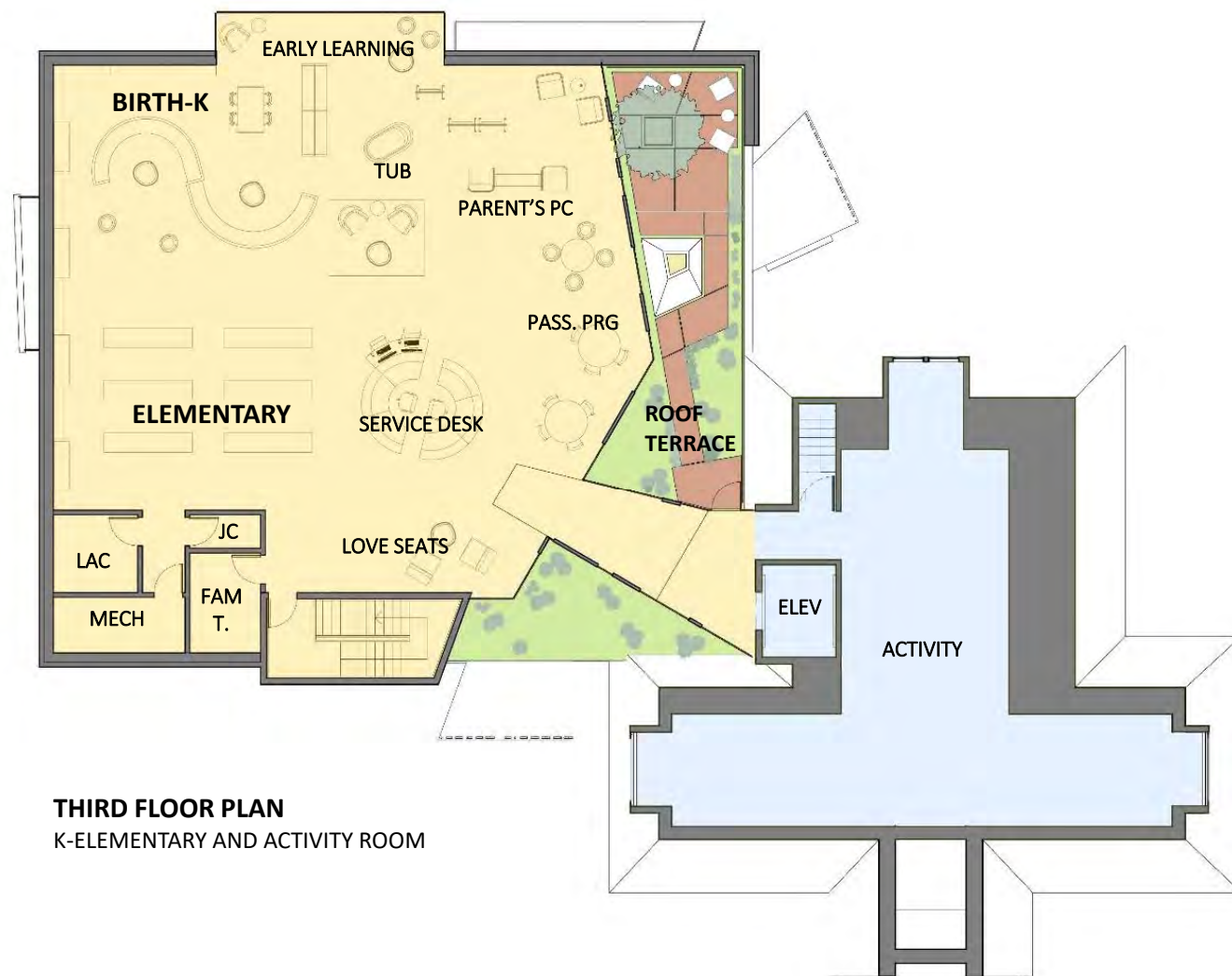
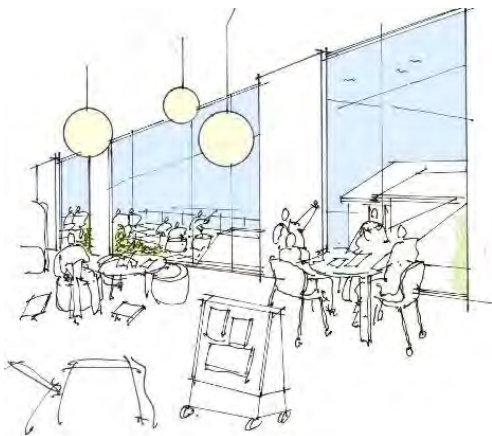




SECOND FLOOR PLAN

MIDDLE SCHOOL COLLECTION, HIGH SCHOOL COLLECTION, COMMUNITY LIVING ROOM AND STUDY ROOMS

02 SECOND FLOOR PLAN



THIRD FLOOR PLAN
K-ELEMENTARY AND ACTIVITY ROOM

03 THIRD FLOOR PLAN



04 SITE PLAN



DESIGN PILLARS

- 01 WELCOMING
- 02 ACCESSIBLE
- 03 SAFETY
- 04 COMMUNITY HUB
- 05 FLEXIBLE
- 06 SUSTAINABLE

TOP 10 DESIGN CHALLENGES

- 01 SIGHTLINES AND SAFETY
- 02 ACCESSIBILITY
- 03 STORAGE
- 04 MAINTENANCE
- 05 FLEXIBILITY
- 06 COMFORTABLE FOR PATRONS
- 07 FUNCTIONAL FOR STAFF
- 08 TECH SUPPORT
- 09 MCTV
- 10 OUTDOOR PROGRAMMING SPACES

BONUS SURPRISE AND DELIGHT

IPL100 TEAM UPDATE

The Ilsley Trustees created this goal for the new building design:

A welcoming, accessible, and safe community hub with the flexibility and sustainability to enrich community members' lives now and into the future.

DESIGN PILLARS

- 01 WELCOMING
- 02 ACCESSIBLE
- 03 SAFETY
- 04 COMMUNITY HUB
- 05 FLEXIBLE
- 06 SUSTAINABLE

TOP 10 DESIGN CHALLENGES

- 01 SIGHTLINES AND SAFETY
- 02 ACCESSIBILITY
- 03 STORAGE
- 04 MAINTENANCE
- 05 FLEXIBILITY
- 06 COMFORTABLE FOR PATRONS
- 07 FUNCTIONAL FOR STAFF
- 08 TECH SUPPORT
- 09 MCTV
- 10 OUTDOOR PROGRAMMING SPACES

BONUS SURPRISE AND DELIGHT

IPL100 TEAM UPDATE

The Ilsley Trustees created this **goal** for the **new building design**:

A **welcoming**, **accessible**, and **safe community hub** with the **flexibility** and **sustainability** to enrich community members' lives now and into the **future**.



How can the renovation/expansion maximize sightlines given the spatial and staffing limits we are working within?

- Lower stack height for collections
- Open plan areas with strategically placed mobile staff stations and self checks
- Glass walls and volumes





In what ways can thoughtful design support not just patrons with mobility issues but patrons living with vision, hearing, speech, sensory or cognitive and neurological disabilities?

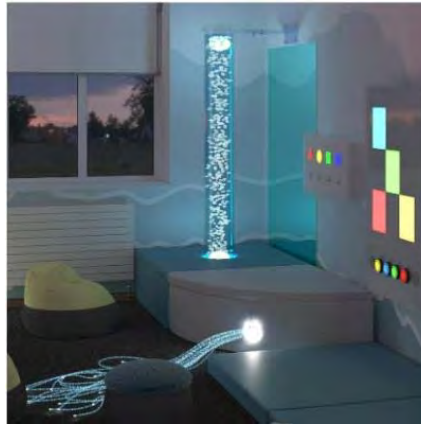
Creating a universally welcoming environment:

- Variety of types of sensory experiences (not limited to children's areas)
- Sound separation zoning and sound attenuation
- Range of seating for different sensory and mobility profiles, including furniture that moves
- Reduction of visual noise
- Entrances with intuitive paths of travel and transition areas for those who need time to adjust
- Welcoming sanitary facilities: matte finishes, extra hooks, paper towel options, lighting with minimal glare



Sensory room or recalibration space incorporating features such as:

- Rocking furnishings, or wobble chairs
- Smooth, soft materials
- Adjustable lighting
- Calming sensory items, i.e. bubble tube or fiber optics



02 ACCESSIBILITY: CALMING SENSORY ROOM



Creative opportunities to maximize storage?

Integrated storage in accessible areas:

- Storage on Display:
 - Stuffbrary casework concept – could be with public service desk but we suggest planning an area for it – lockable in the public space. Suggest organizing it and ‘on display’
 - Room dividers can be wall displays
- Makerspace or program room supplies: movable carts, colorful organized bins ‘on display’
- Staff area with worktables with storage underneath
- Consideration for some of the collections to go into a space saver system in high density shelving





Limit the resources currently spent on maintenance to redirect towards collections?

Material kit of parts:

- minimal overall finish palette
- high performing materials
- durable materials
- easily cleanable materials



Allow for easy reconfiguration of interior spaces, allow for potential expansion.

Flexible, reconfigurable space:

- Collections on casters to allow for reconfiguration, events, etc.
- Retail style displays for special or seasonal items/collections that can be moved, rotated and restocked easily
- Multipurpose spaces with multiple plan configurations and ability to close off, or partition if needed.



Balancing competing needs of patrons:

- Choice: variety of seating typologies and areas
- Maximize open spaces by lining available walls with cozy nook areas
- Focus/zoom rooms and Huddle rooms
- Adjustable tables for PC's





Functional for staff:

- On the floor workspaces that allow librarians to complete tasks while also keeping an eye out/assisting patrons
- Private work areas for focus work
- Staff wellness initiatives: comfortable break areas with light and outdoor views, respite spaces/quiet rooms
- Communal workrooms – preparation table area in staff. Layout should be efficient and resources = appointed.
- Visibility and sightlines
- Comfortable retreat in the staff breakroom

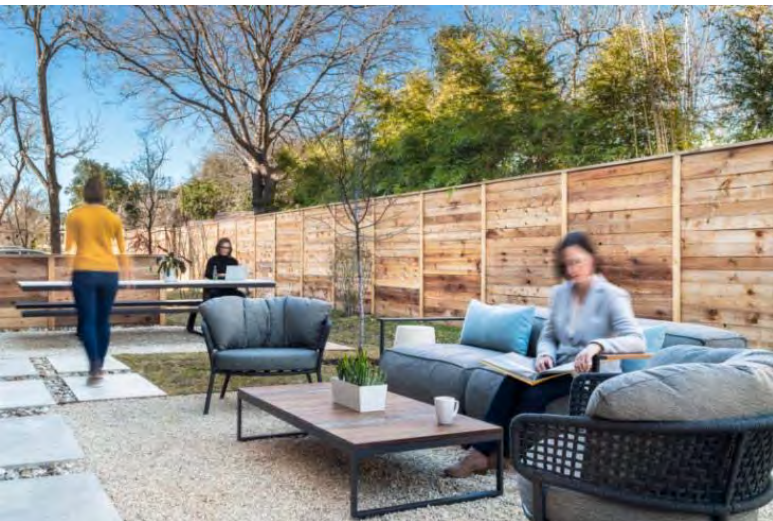




Studio on Display

- Flexible studio room
- Plug and play technology





Roof terrace play garden
Community space

OUTDOOR
ROOF AREA



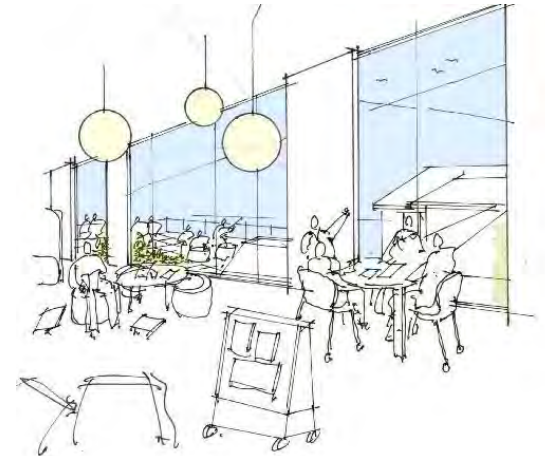
SOUTH GARDEN



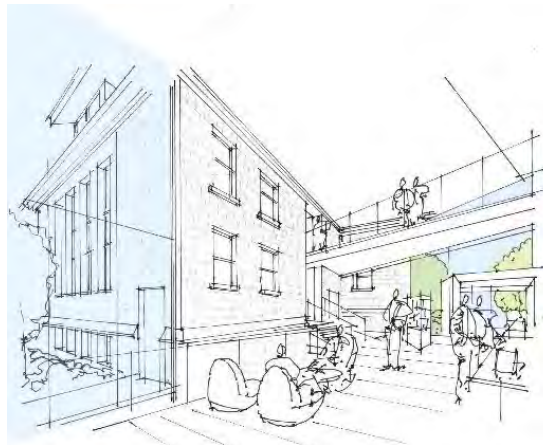
PUBLIC SEATING



2ND FLOOR BRIDGE: OPEN TO BELOW



3RD FLOOR VIEW TO OUTDOOR ROOF AREA



INTERIOR VIEWS OF 1924 LIBRARY AT CONNECTOR



“SURPRISE + DELIGHT”

NEW ADDITIONS

REHABILITATION IS THE ONLY TREATMENT THAT ALLOWS EXPANDING A HISTORIC BUILDING BY ENLARGING IT WITH AN ADDITION....NEW ADDITIONS SHOULD BE DESIGNED AND CONSTRUCTED SO THAT THE CHARACTER DEFINING FEATURES OF THE HISTORIC BUILDING, ITS SITE, AND SETTING ARE NOT NEGATIVELY IMPACTED. GENERALLY, A NEW ADDITION SHOULD BE SUBORDINATE TO THE HISTORIC BUILDING. A NEW ADDITION SHOULD BE COMPATIBLE, BUT DIFFERENTIATED ENOUGH SO THAT IT IS NOT CONFUSED AS HISTORIC OR ORIGINAL TO THE BUILDING.

excerpt from the SECRETARY OF THE INTERIOR'S STANDARDS FOR REHABILITATION

APPROACH

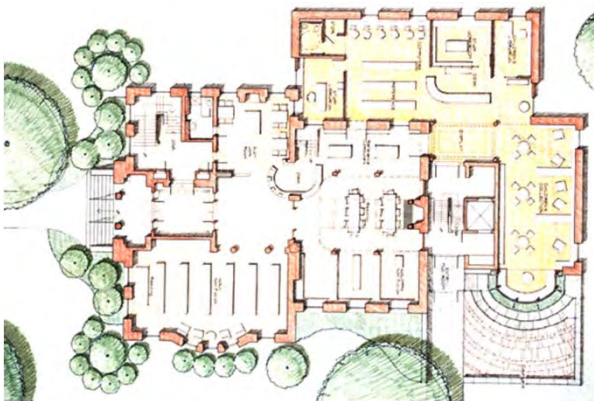
- SIMPLE COMPLEMENTARY FORM.
- RESPECT THE EXISTING ROOF EAVE.
- CONNECTOR TO GENTLY TOUCH THE HISTORIC BUILDING.
- DEMARCATATE TWO ENTRANCES WITHOUT COMPETING WITH THE EXISTING.
- RE-PRESENT HISTORIC STRUCTURE AT THE INTERIOR OF THE NEW.



HISTORIC PRESERVATION

“You did a wonderful job incorporating the old and new building styles...”

Senator Leahy referring to the Kellogg-Hubbard Library



NEW ADDITIONS

HISTORIC PRESERVATION

DESIGN EXCELLENCE

Design Excellence is the integration of purpose, beauty, and **sustainability**. It is basic to all of our projects and our approach to design.

Design for Integration

We understand that the built environment has an outsized effect on our natural environment and we work hard to minimize its potential negative effects.

Design for Equitable Communities

This community focused approach to design ensures that each building is uniquely tailored to the people who will be experiencing and utilizing it.

Design for Ecosystems

Our design approach hinges on the belief that sense of place is important and impactful.

Design for Energy

We share the goal of reducing Energy Use Intensity (EUI) - savings in operational costs for the life of the building and ultimately a smaller burden on the earth and its resources.



gbA selected to design the VEIC (EFFICIENCY VERMONT) - NEW OFFICES



gbA MASS TIMBER OFFICE



DAYLIGHT AT LIBRARY

SUSTAINABILITY

Design for Well-being

People benefit from appropriate light levels, connection to the outdoors, and varied living and gathering spaces.

Design for Economy

We value affordable, attractive, durable, and low maintenance materials, but the specific approach to sustainability will be tailored to your needs.

Design for Resources

On a planet where resources are finite, building materials and components must be selected with this in mind.

Design for Change

Flexibility and adaptability are crucial for buildings to last as long as intended. As societies, economies, and the environment are dynamic and ever changing, buildings must change with them. This is especially true of Libraries.

Design for Discovery

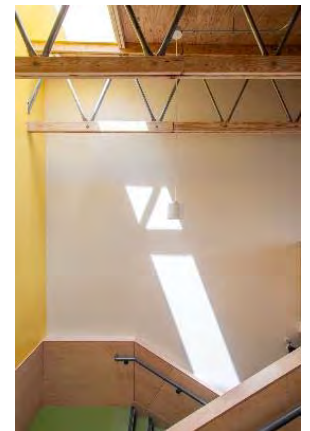
Can people learn from a building? What aspects of the building can contribute to engagement and connection?



MIXED USE BUILDING PROVIDING POWER TO THIS AND A SEPARATE BUILDING



NATURAL MATERIALS/COMMUNITY/TRANSPORTATION



ECONOMY OF MATERIALS

SUSTAINABILITY









**Your turn
to talk**



VIA





ILSLEY LIBRARY

ILSLEY LIBRARY

EMBRACE THE PAST | LOOK
TO THE FUTURE



VERMONT INTEGRATED
ARCHITECTURE, PC





ILSLEY LIBRARY

VIA PEOPLE





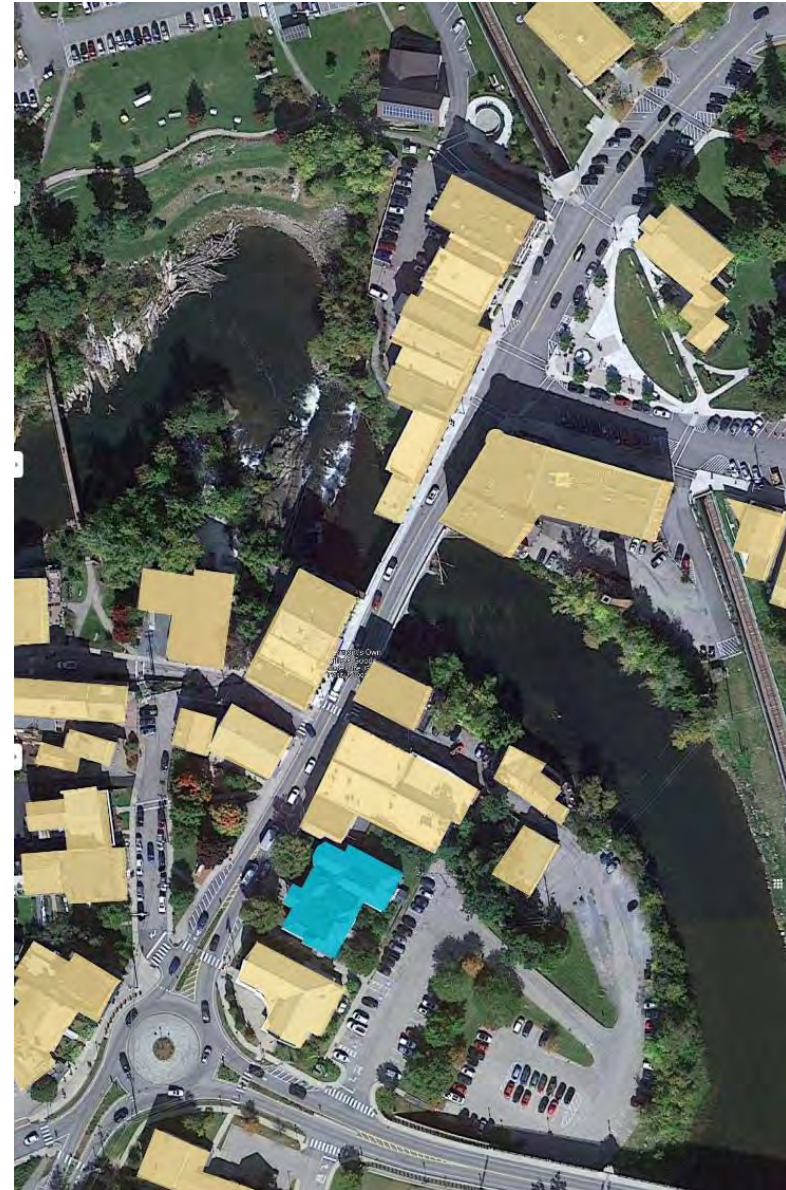
ILSELEY LIBRARY

ABOUT LIBRARIES





ILSLEY LIBRARY



CONTEXT





ILSLEY LIBRARY



CONTEXT

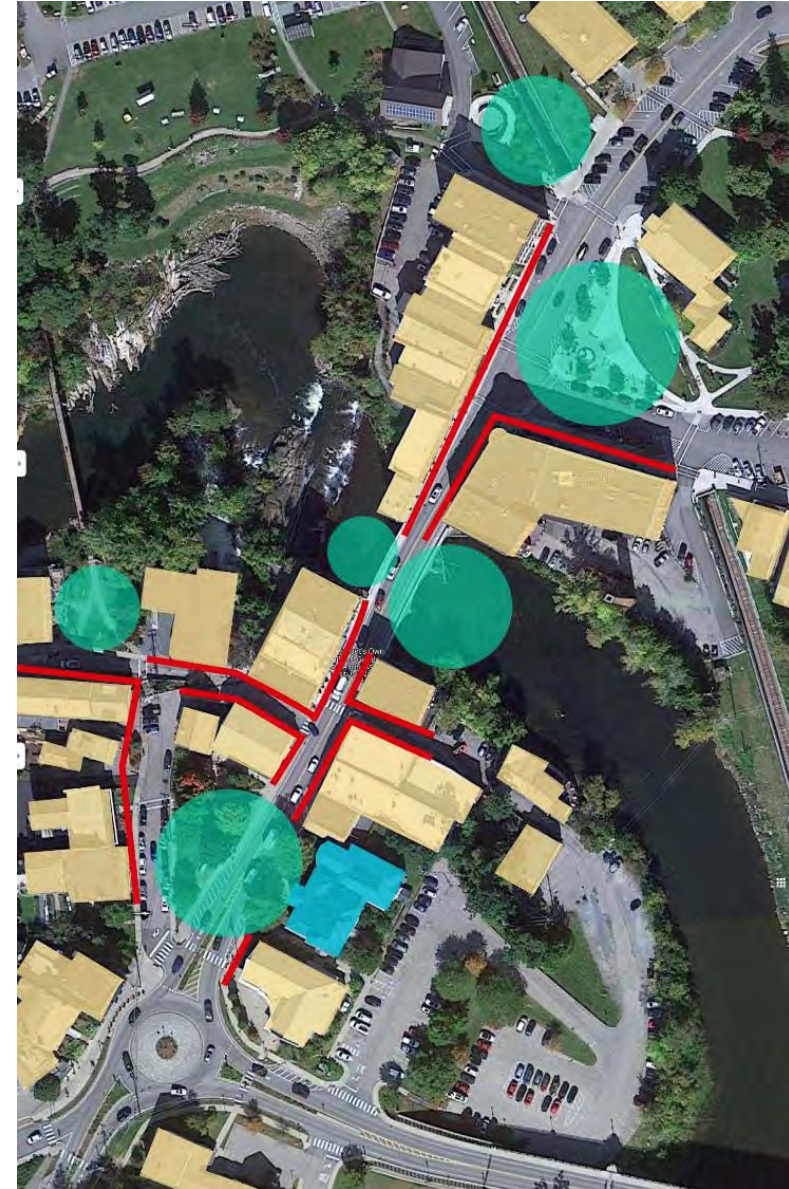


VERMONT INTEGRATED
ARCHITECTURE, PC



ILSLEY LIBRARY

CONTEXT





ILSLEY LIBRARY

CONTEXT



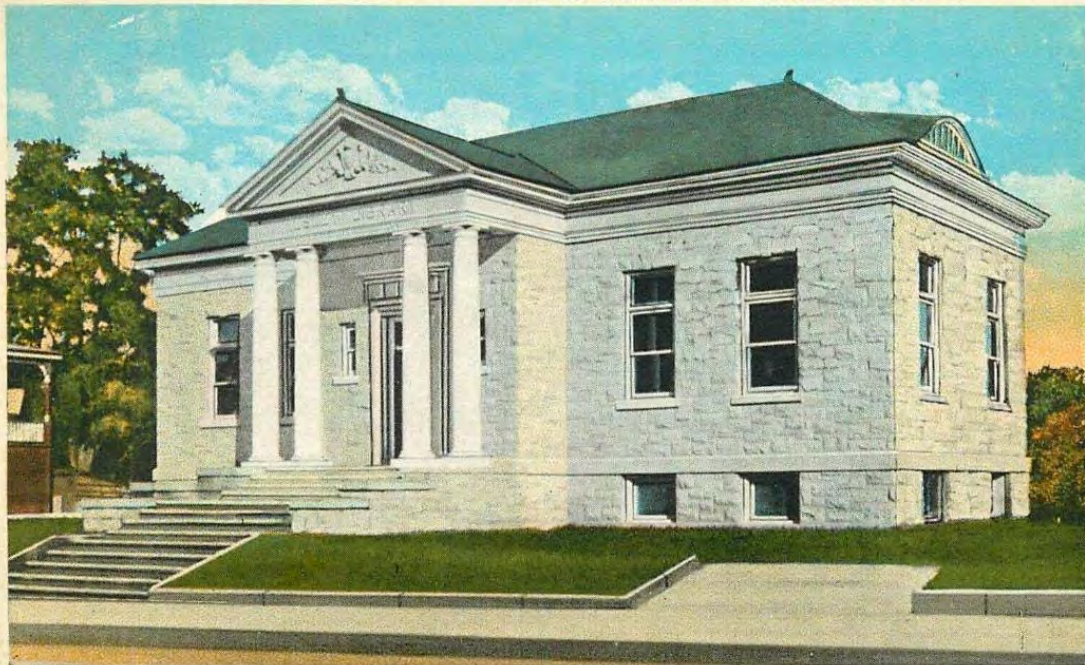


ILSLEY LIBRARY

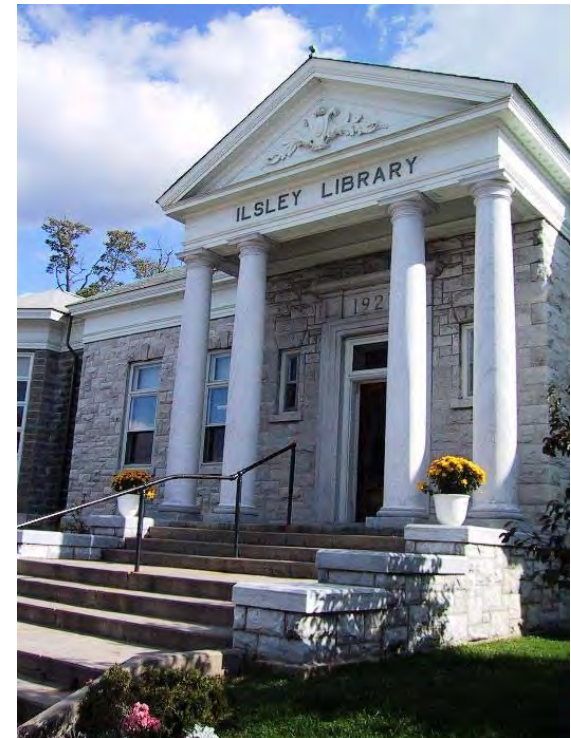
HISTORY



ILSLEY LIBRARY, MIDDLEBURY, VERMONT. 11



106003





ILSLEY LIBRARY

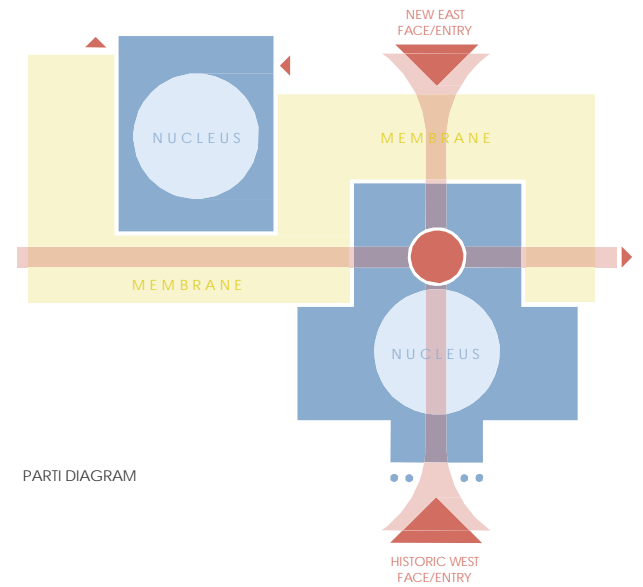
DESIGN CONCEPT



SITE PLAN



JANUS - ROMAN GOD OF THRESHOLDS

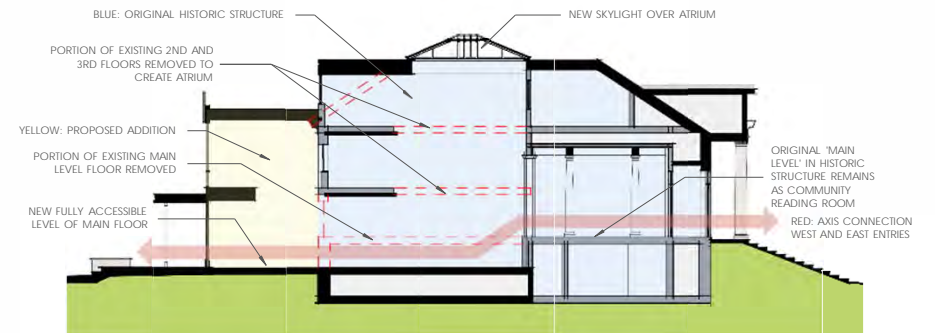
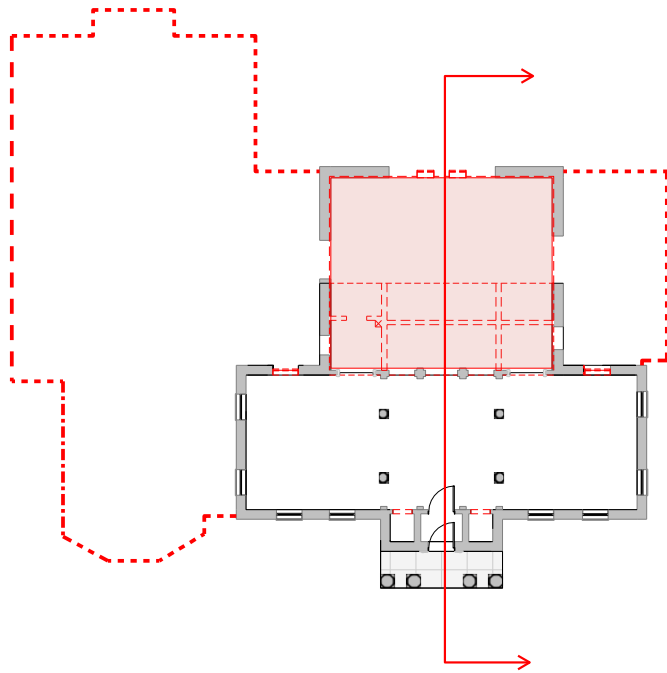


PARTI DIAGRAM



ILSLEY LIBRARY

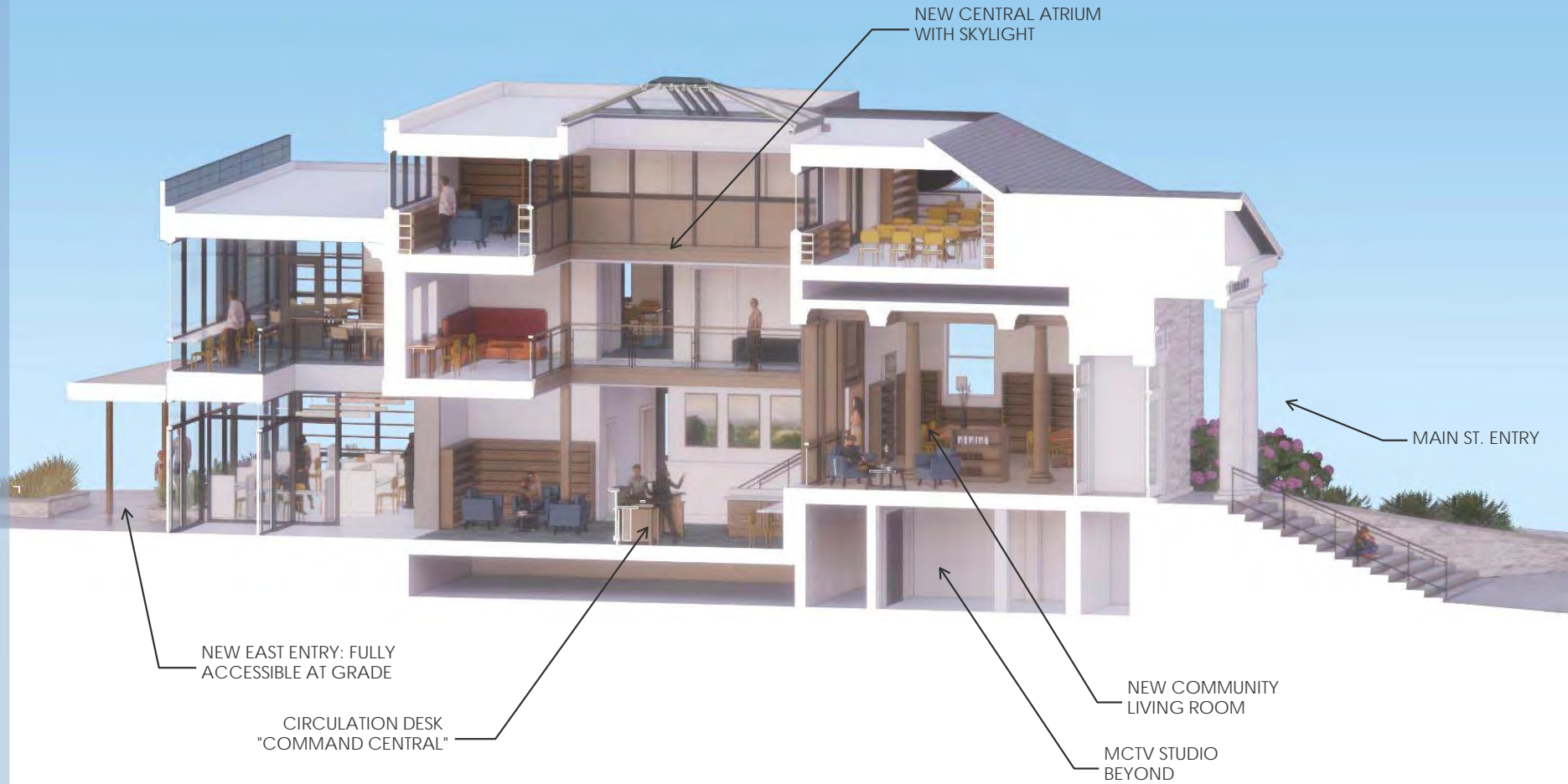
BIG IDEA





ILSLEY LIBRARY

BIG IDEA





ILSLEY LIBRARY



PAST



PRESENT



FUTURE

BIG IDEA

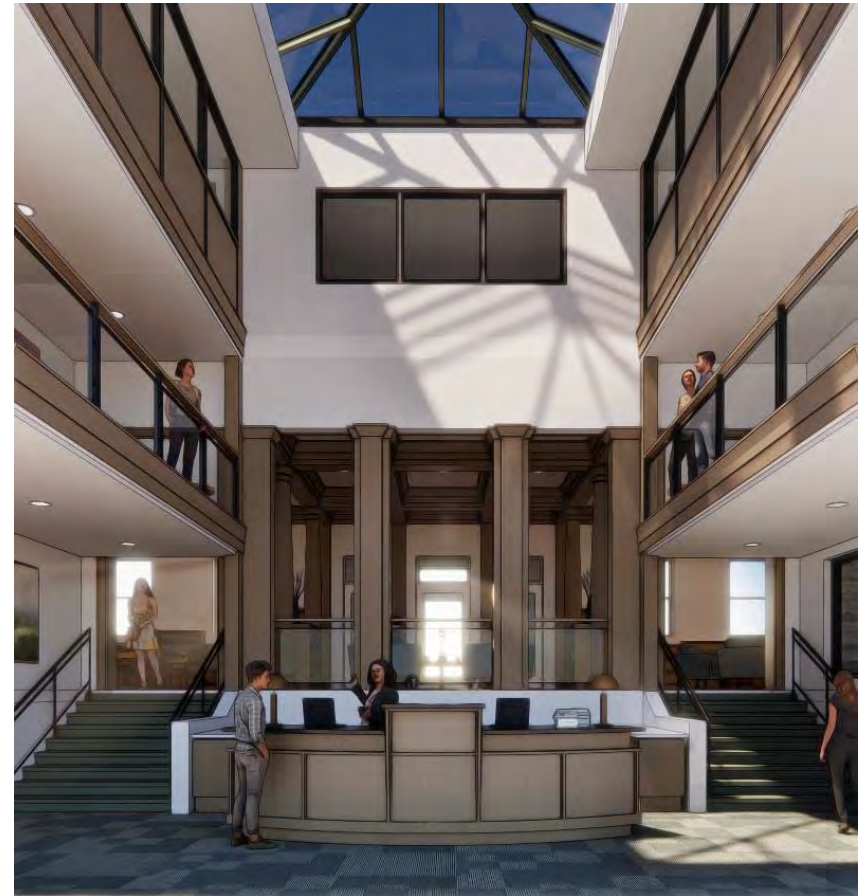




ILSLEY LIBRARY



ANIMATION

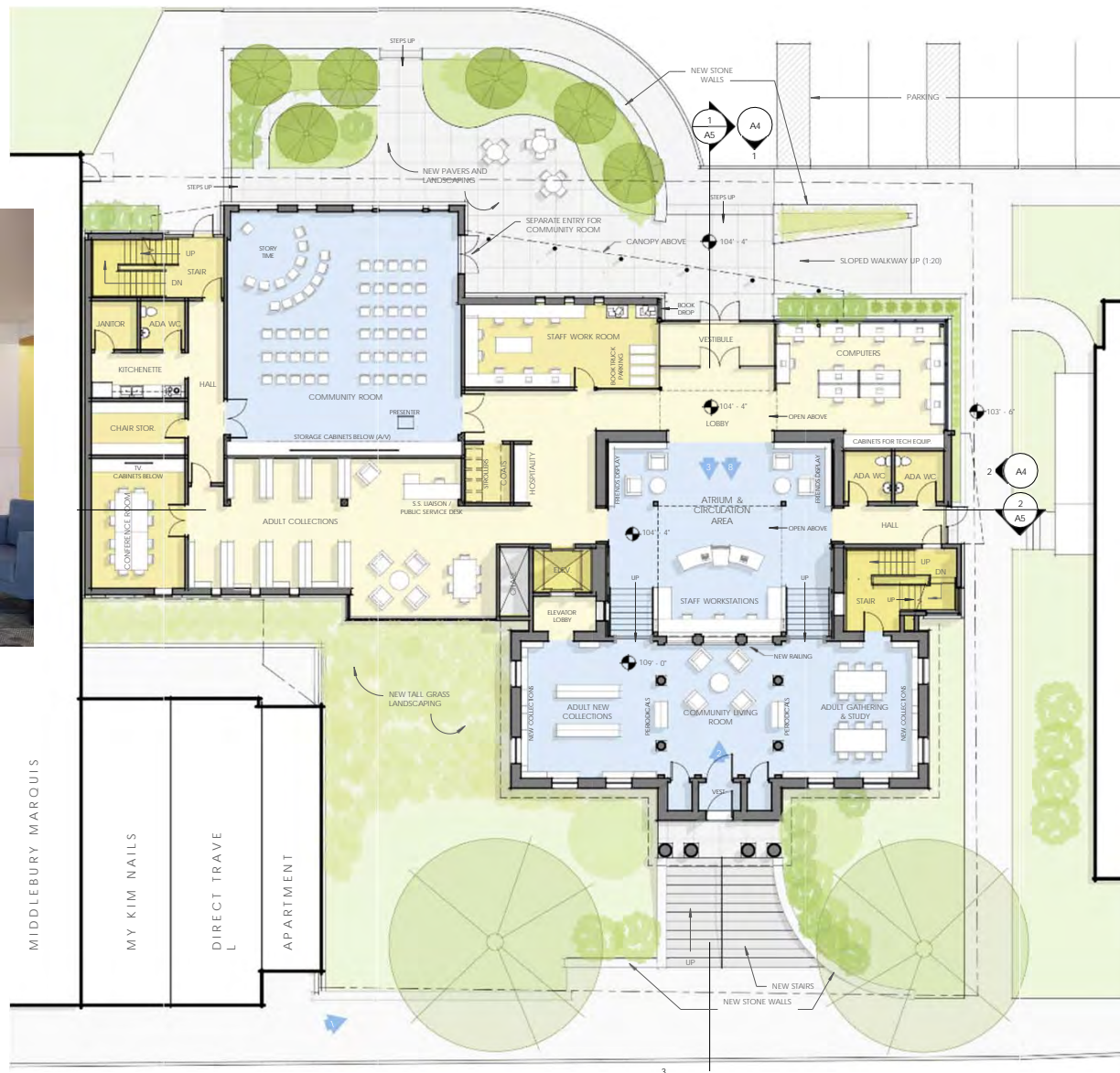


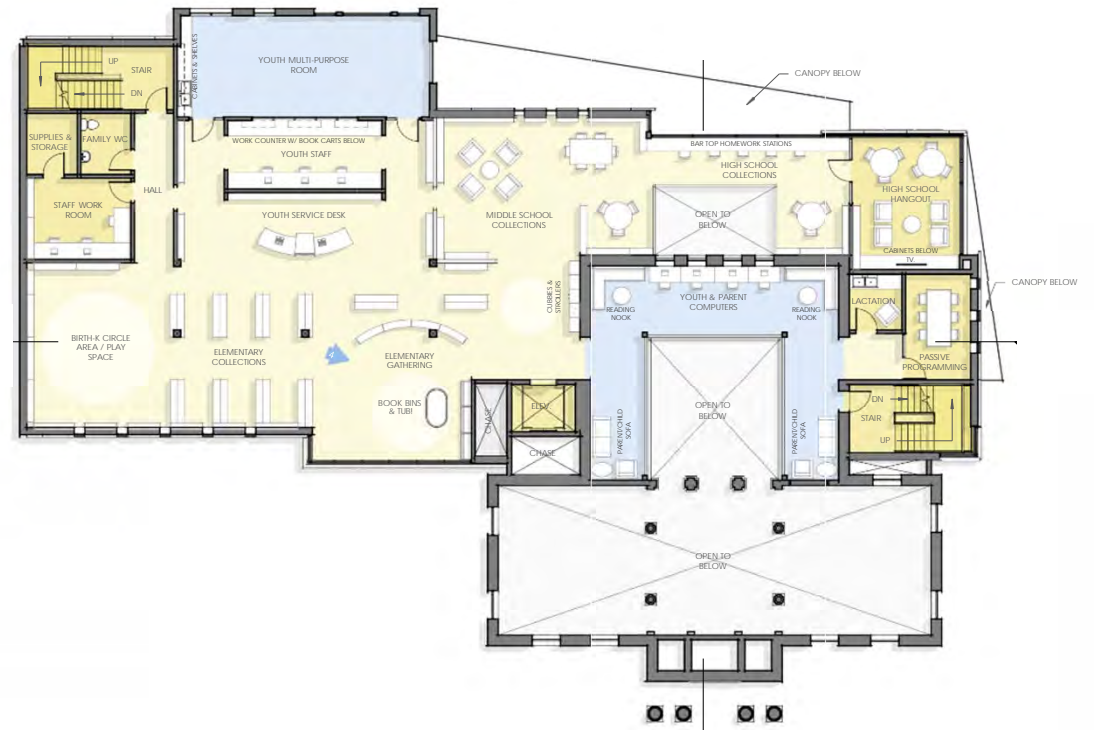


WALK-THROUGH



MAIN FLOOR LEVEL





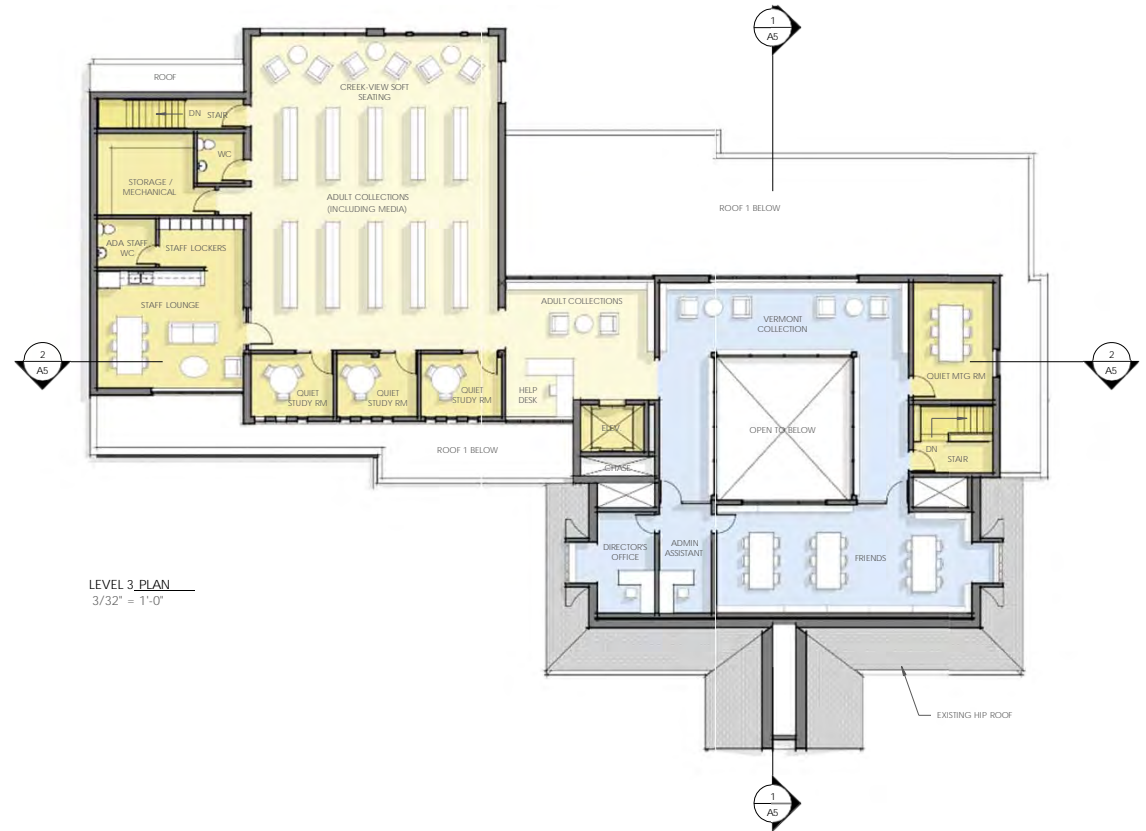


ILSLEY LIBRARY

WALK-THROUGH



THIRD FLOOR LEVEL





ILSLEY LIBRARY

FORM & MATERIAL



NEW EAST ENTRANCE



VERMONT INTEGRATED
ARCHITECTURE, PC

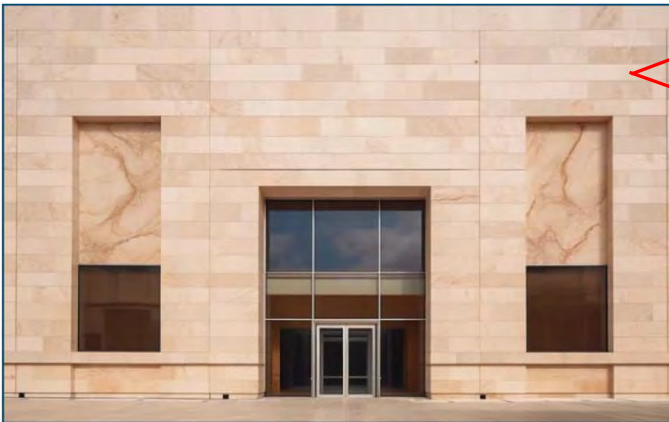


ILSLEY LIBRARY

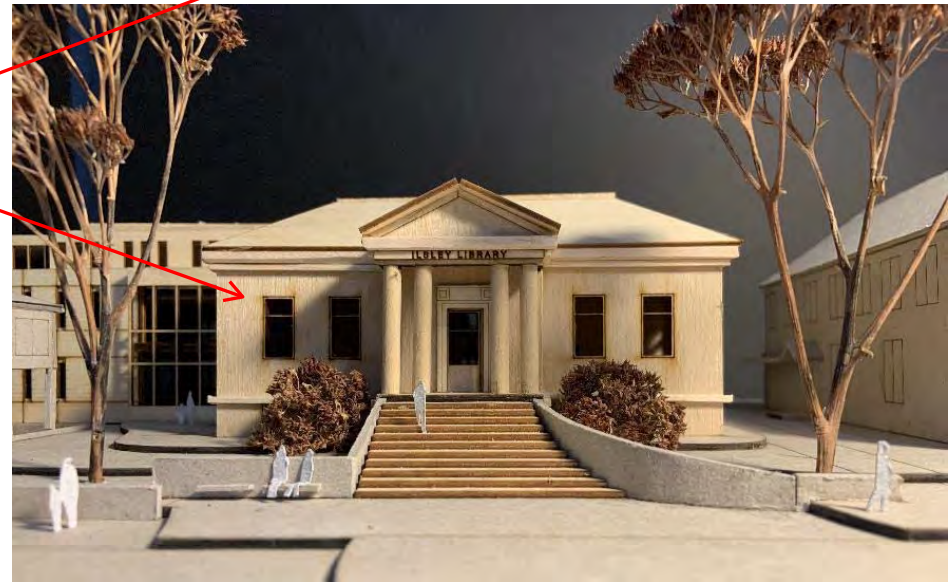
FORM & MATERIAL



EXAMPLE: LARGE GLASS OPENINGS AND SLATE - "LIGHT SKIN"



EXAMPLE: DEEP SET OPENINGS IN STONE MASONRY - "HEAVY MASS"





ILSLEY LIBRARY

FORM & MATERIAL



TRANSPARENT AND LIGHT BEHIND ORIGINAL STONE



ORIGINAL STONE FACADE AND INTERIOR SEEN THROUGH NEW TRANSPARENT ENTRY



ILSLEY LIBRARY

SUSTAINABILITY

Y



SUSTAINABLE DEVELOPMENT GOALS





ILSLEY LIBRARY

THANK
YOU!





**Your turn
to talk**

Wiemann Lamphere / ReArch



"The Secret Garden"

A novel by Frances Hodgson Burnett
Published 1911

 ILSLEY PUBLIC LIBRARY



 Wiemann
Lamphere
ARCHITECTS

 ReArch
COMPANY



WHO WE ARE: DESIGN + CONSTRUCTION EXPERTISE



ARCHITECTURE &
LIBRARY PLANNING



Steve Roy
Vice President



Kelley DesRoches
Vice President



Michael Minadeo
Design Director



Dennis Humphrey
Library Consultant



ESTIMATING,
CONSTRUCTABILITY



John Illick
CEO



Chris Huston
VP of Preconstruction

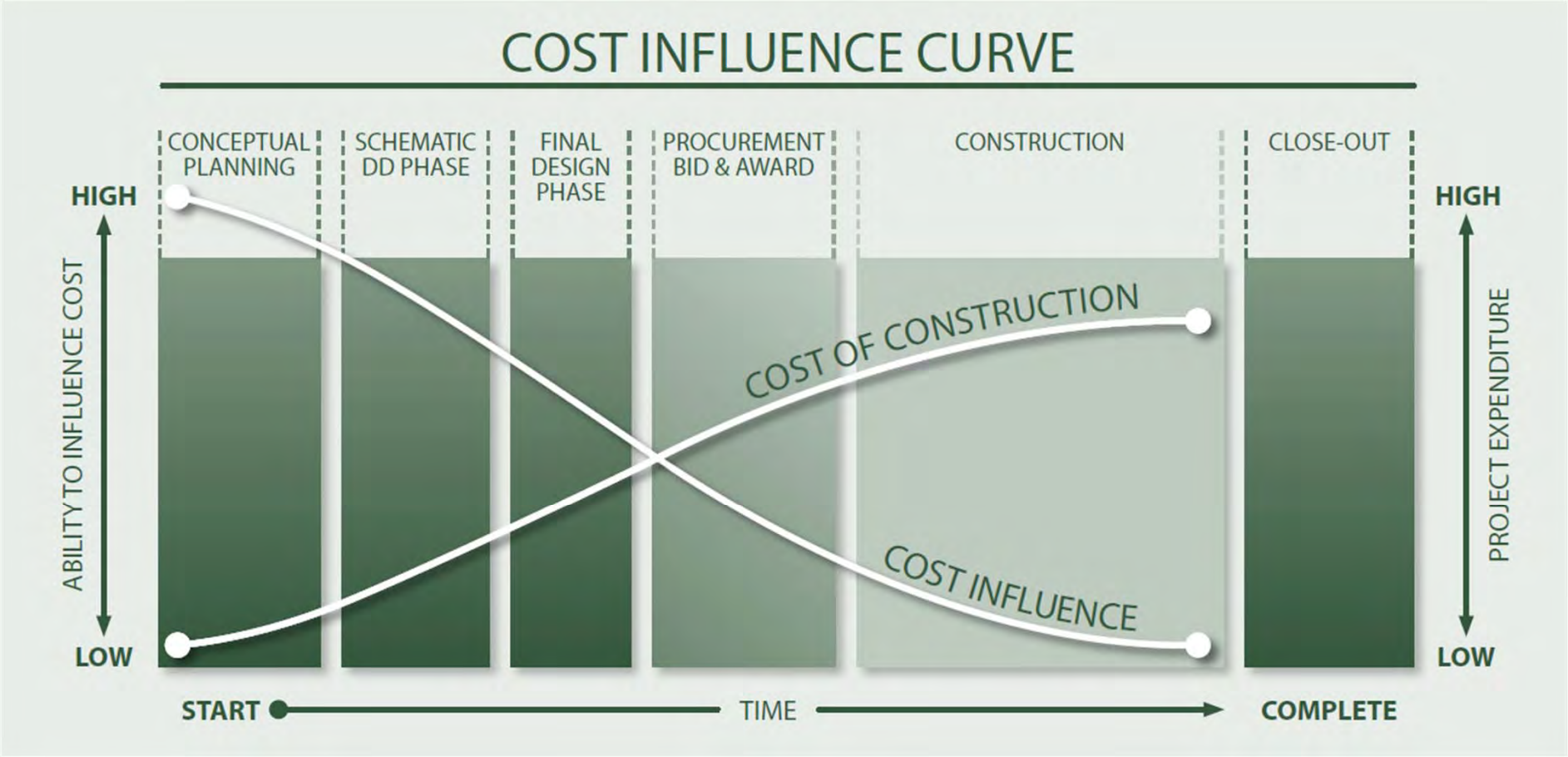


Jim Gardner
Senior Estimator



Bert DeLaBruere
President &
Chief Estimator

BENEFITS OF EARLY CONSTRUCTION TEAM INVOLVEMENT



WHY WE ARE HERE



Top 10 Design Challenges:

- Sightlines & Safety
- Accessibility
- Storage
- Maintenance
- Flexibility
- Comfortable for Patrons
- Functional for Staff
- Tech Support
- MCTV
- Outdoor Programming Spaces

Design Pillars:

- Welcoming
- Accessible
- Safe
- Community Hub
- Flexible
- Sustainable

Additionally:

- *Meet program requirements provided*
- *Follow Guidelines for Rehabilitating Historic Buildings*
- *Consider cost and budget limits provided*

THE DESIGN PROCESS

MOVE-IN & UNDERSTAND

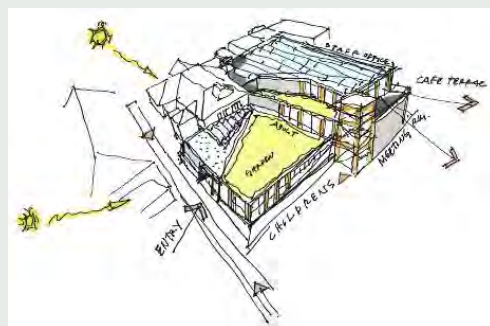
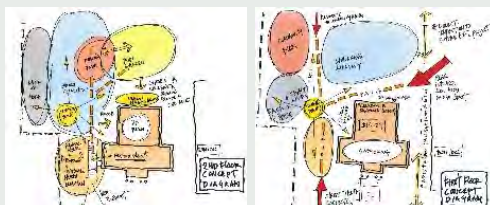


What we heard from everyone!



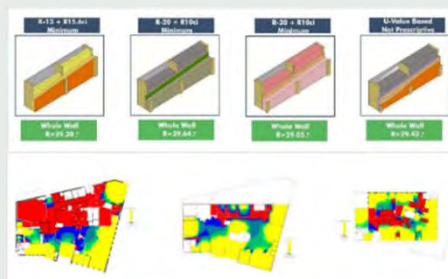
- ✓ PROGRAM OF SPACES
- ✓ ADJACENCY DIAGRAMS
- ✓ WRITTEN PROJECT GOALS
- DISCUSSION AND FEEDBACK

CREATE



- ✓ CONCEPT CREATION
- MULTIPLE CONCEPTS
- DISCUSSION AND FEEDBACK

AGREEMENT



- ENERGY MODELING
- VALUE MANAGEMENT
- DESIGN DEVELOPMENT

BUILDING IT TOGETHER

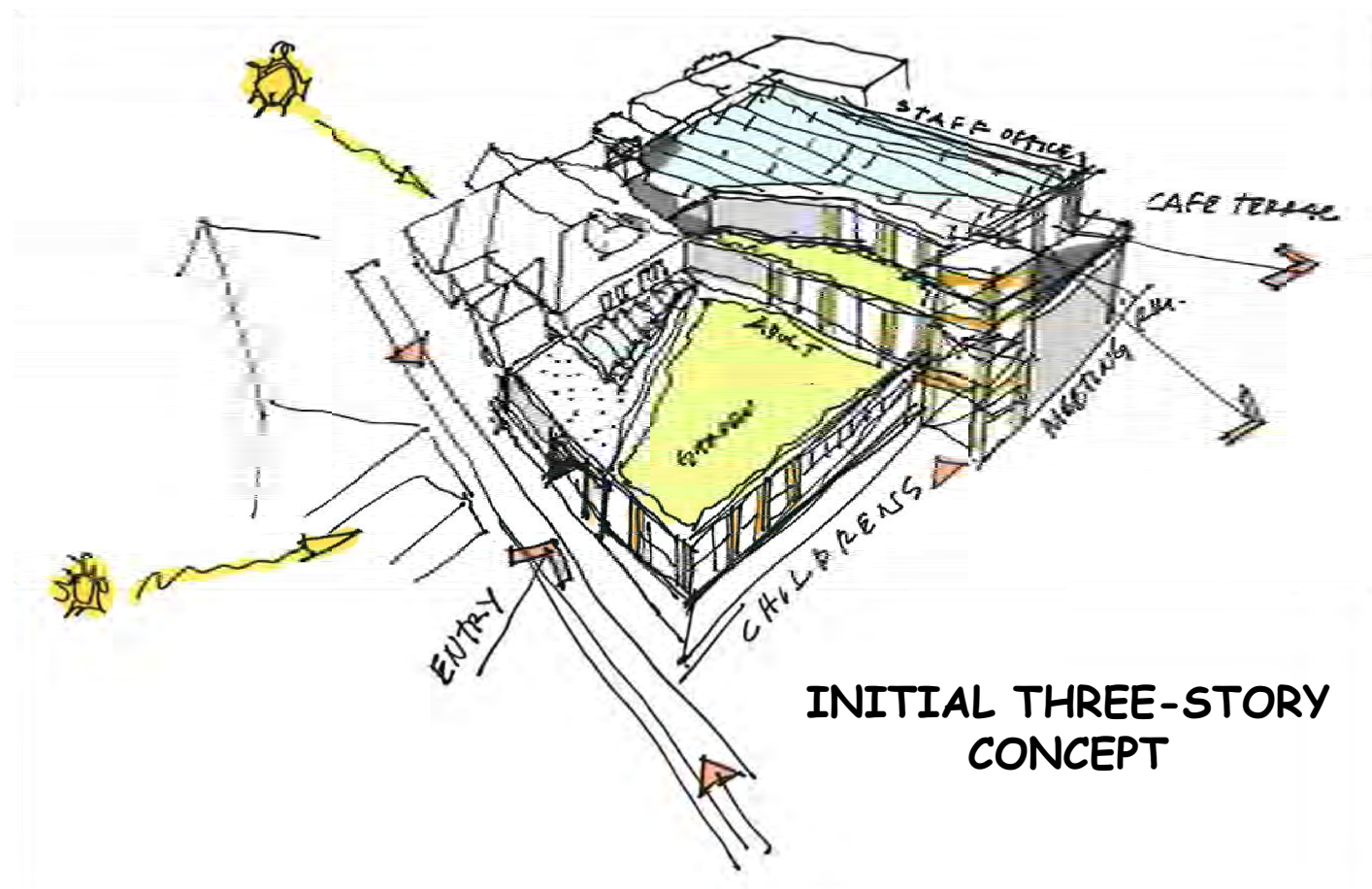


- DETAILED DRAWINGS
- CONSTRUCTION PARTNERSHIP
- CELEBRATION!

DEVELOPMENT OF "THE SECRET GARDEN" CONCEPT

OVERALL GOALS

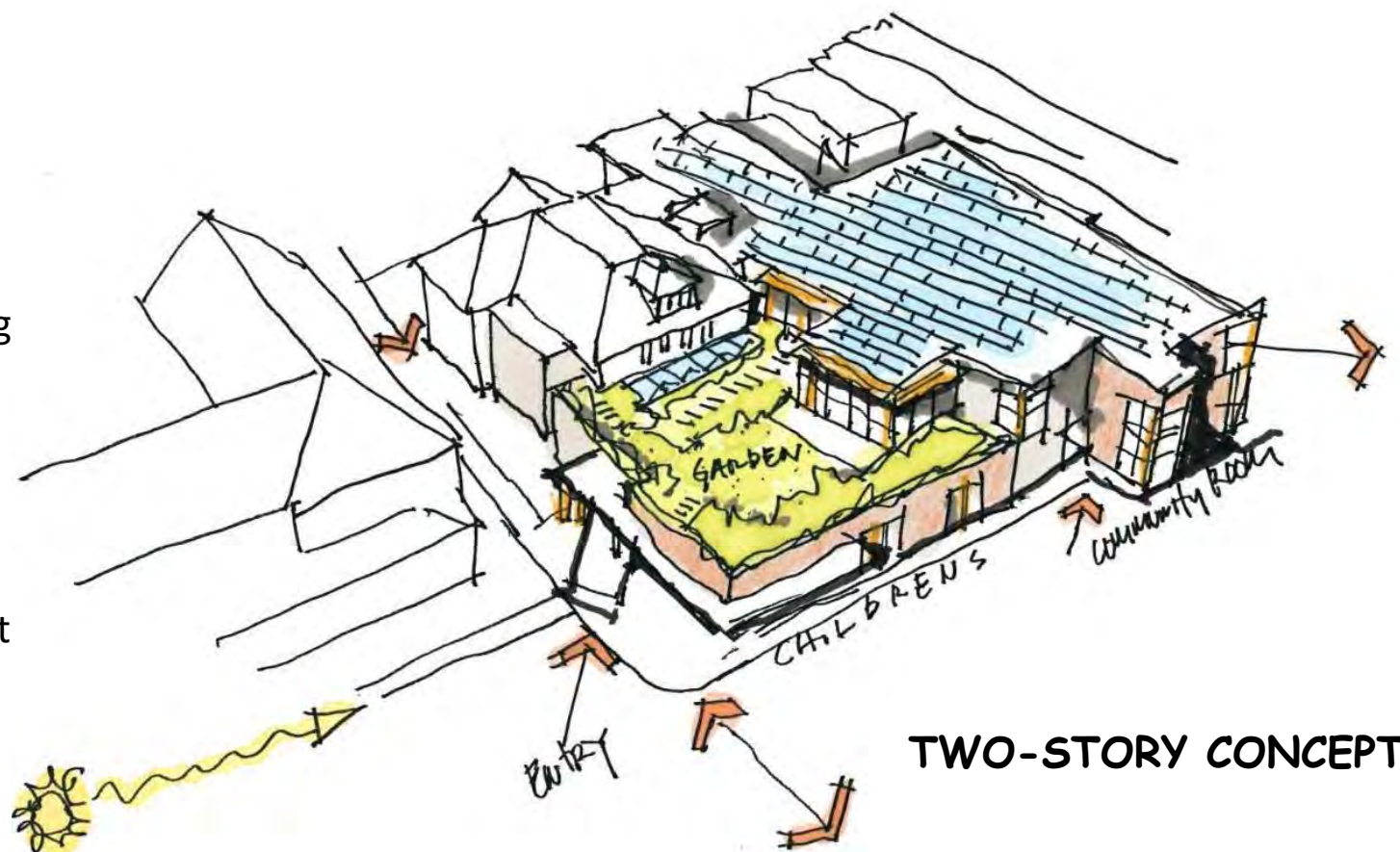
- Meet the program needs
- Minimize floors to reduce staffing needs, improve visibility and ease wayfinding
- Maintain integrity of 1924 building – restoration only
- Create a safe, welcoming, and sustainable environment for the community to enjoy for another century!



DEVELOPMENT OF "THE SECRET GARDEN" CONCEPT

OVERALL GOALS

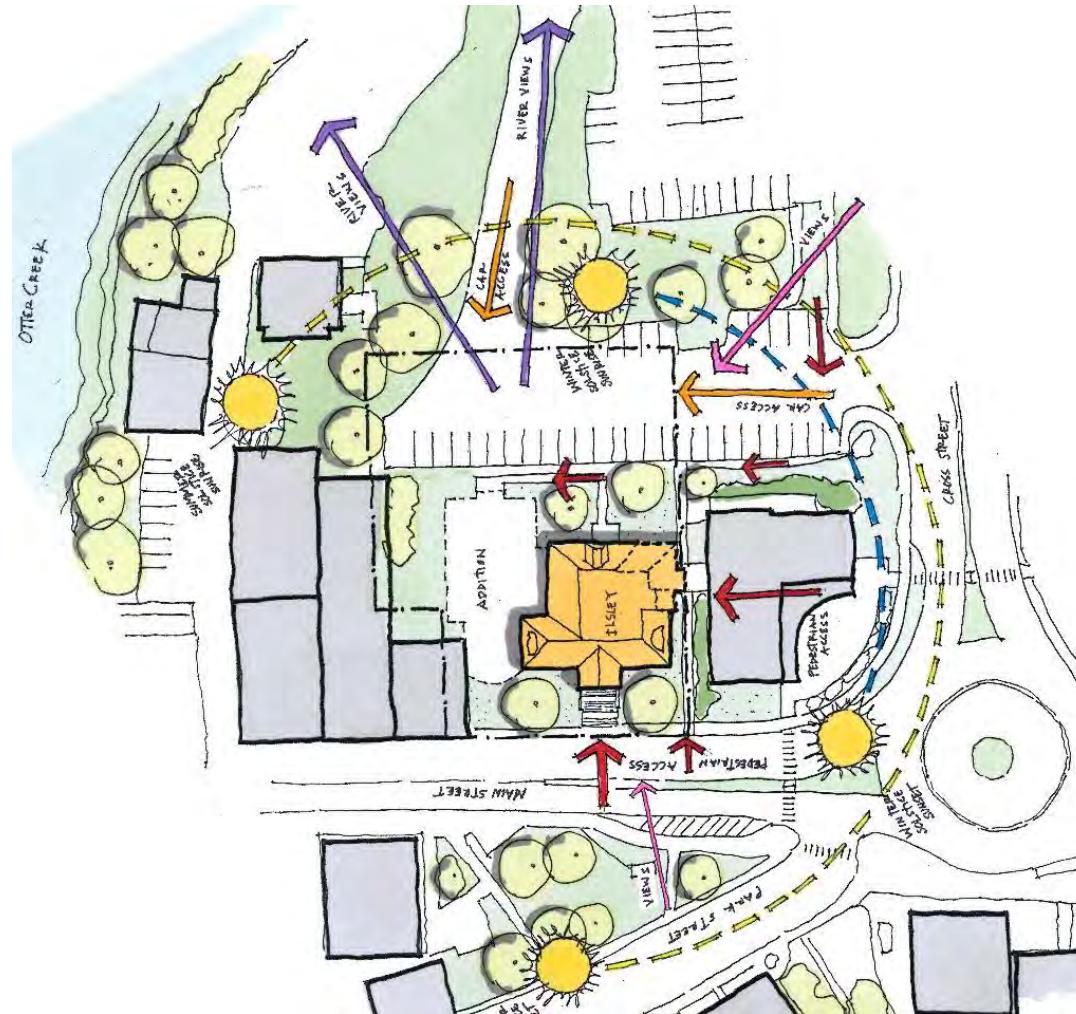
- Meet the program needs
- Minimize floors to reduce staffing needs, improve visibility and ease wayfinding
- Maintain integrity of 1924 building – restoration only
- Create a safe, welcoming, and sustainable environment for the community to enjoy for another century!



DEVELOPMENT OF "THE SECRET GARDEN" CONCEPT

SITE ANALYSIS

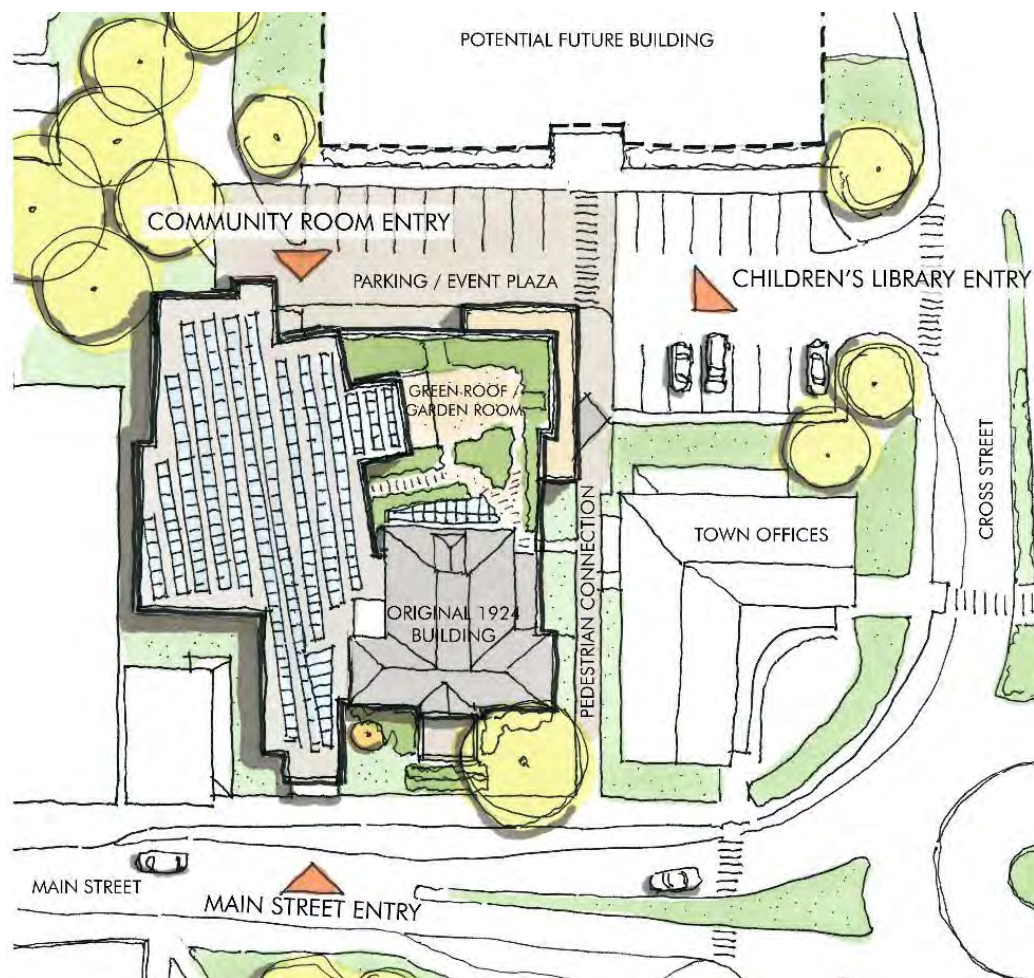
- Vehicle & Pedestrian movements
- Sun orientation
- Views of the site and from the site
- Analyze existing buildings



DEVELOPMENT OF "THE SECRET GARDEN" CONCEPT

OUR EXTERIOR GOALS

- Consider the entry experience from Main Street sidewalk & display activity happening within the library
- Enhance the sidewalk connection between Town Offices & Library and reinforce connection to future development (EDI)
- Create usable plaza space for occasional outdoor library & community events (book sales, food trucks, etc)



PROPOSED SITE PLAN

DEVELOPMENT OF "THE SECRET GARDEN" CONCEPT

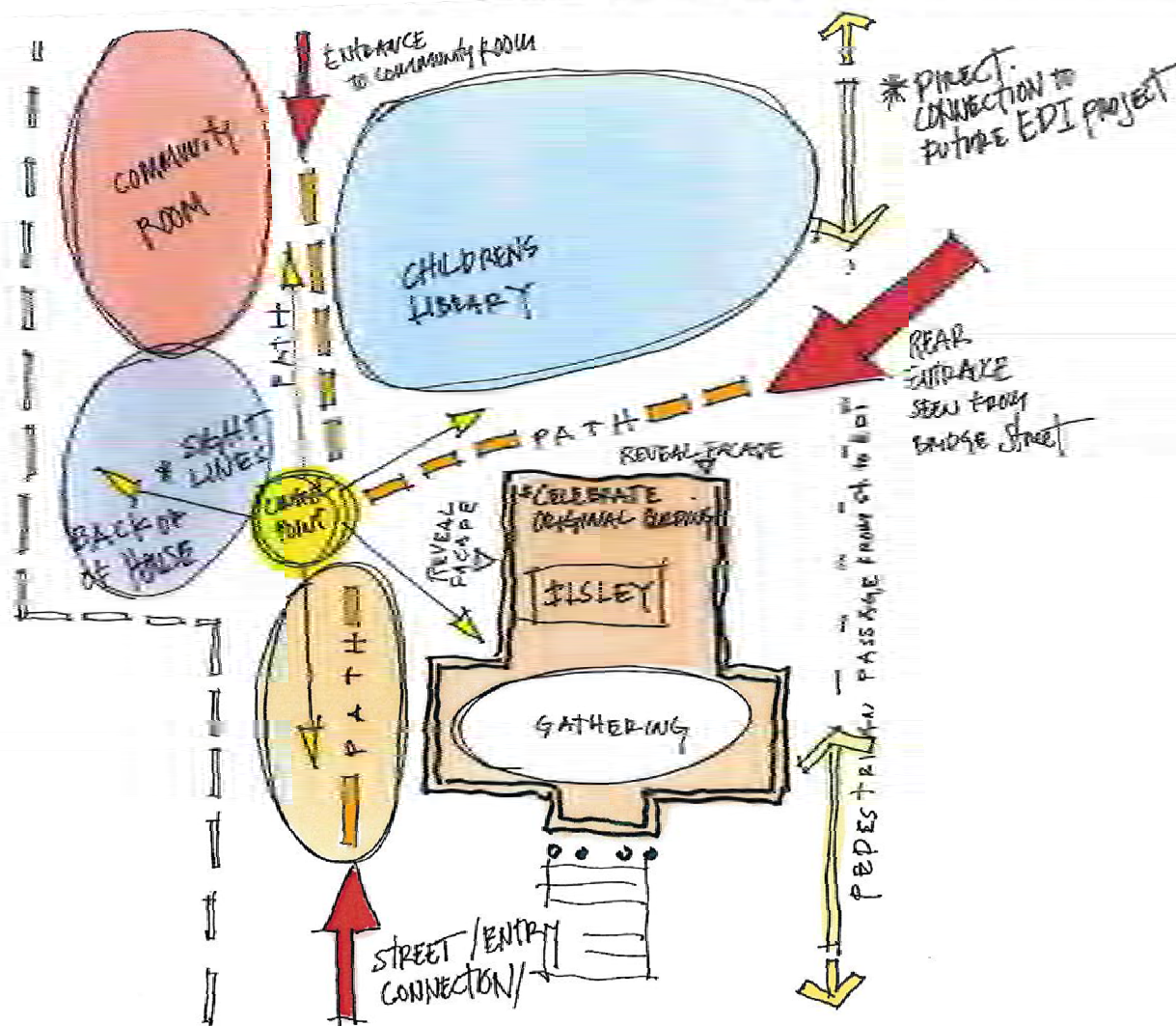


EXTERIOR – PEDESTRIAN PLAZA

DEVELOPMENT OF "THE SECRET GARDEN" CONCEPT

FIRST FLOOR GOALS

- Entrances that are accessible to all and easy to find
- Community spaces that are easily accessed after hours
- First floor children's library for easiest access with strollers and response to this heavily used part of the building
- Support spaces and control points placed to aid staff to do their best work

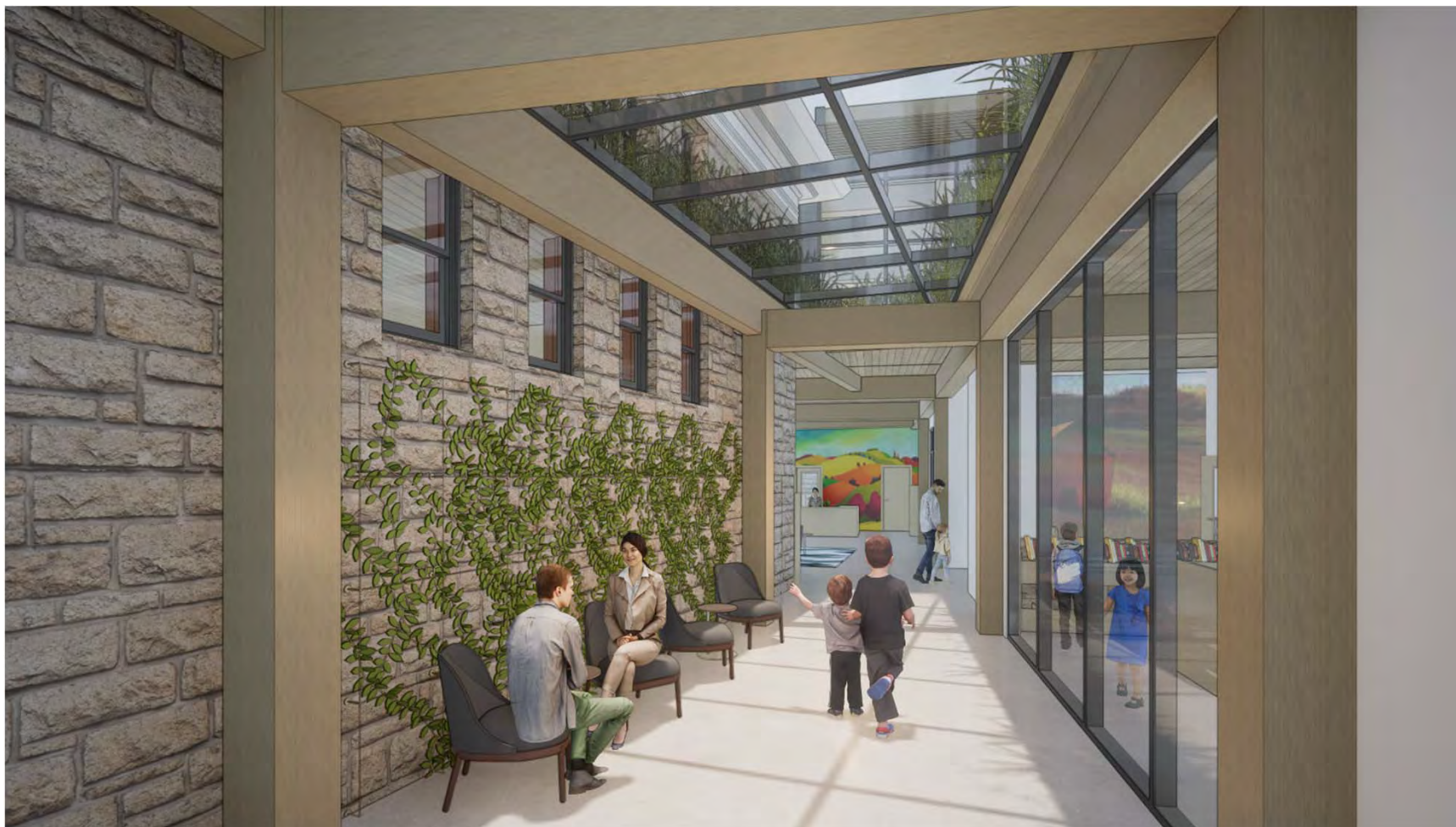


FIRST FLOOR GOALS

- Entrances that are accessible to all and easy to find
- Community spaces that are easily accessed after hours
- First floor children's library for easiest access with strollers and response to this heavily used part of the building
- Support spaces and control points placed to aid staff to do their best work



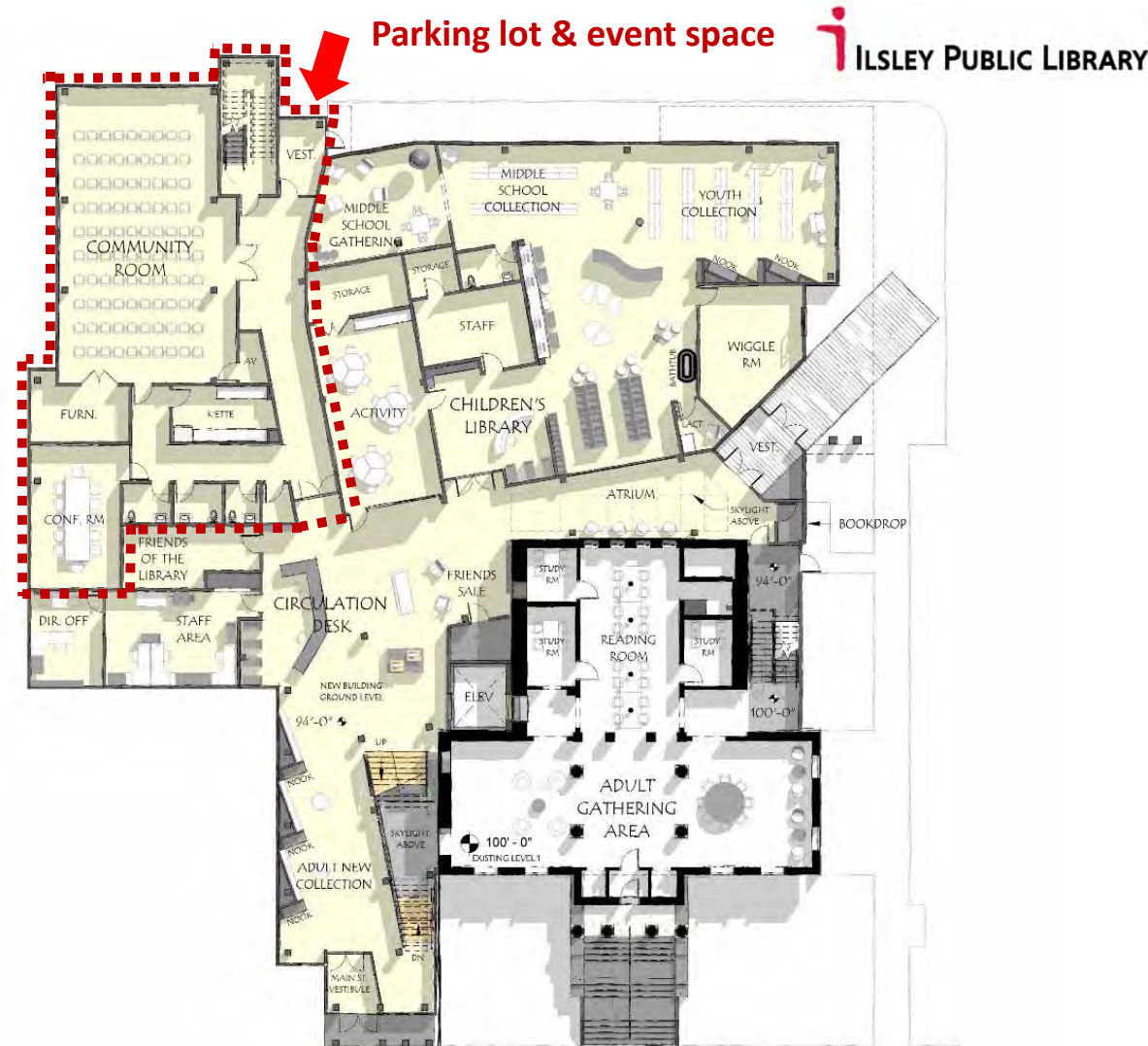
DEVELOPMENT OF "THE SECRET GARDEN" CONCEPT



LEVEL 1 – SOUTH ENTRY SKYLIGHT LOOKING TOWARDS CIRCULATION DESK

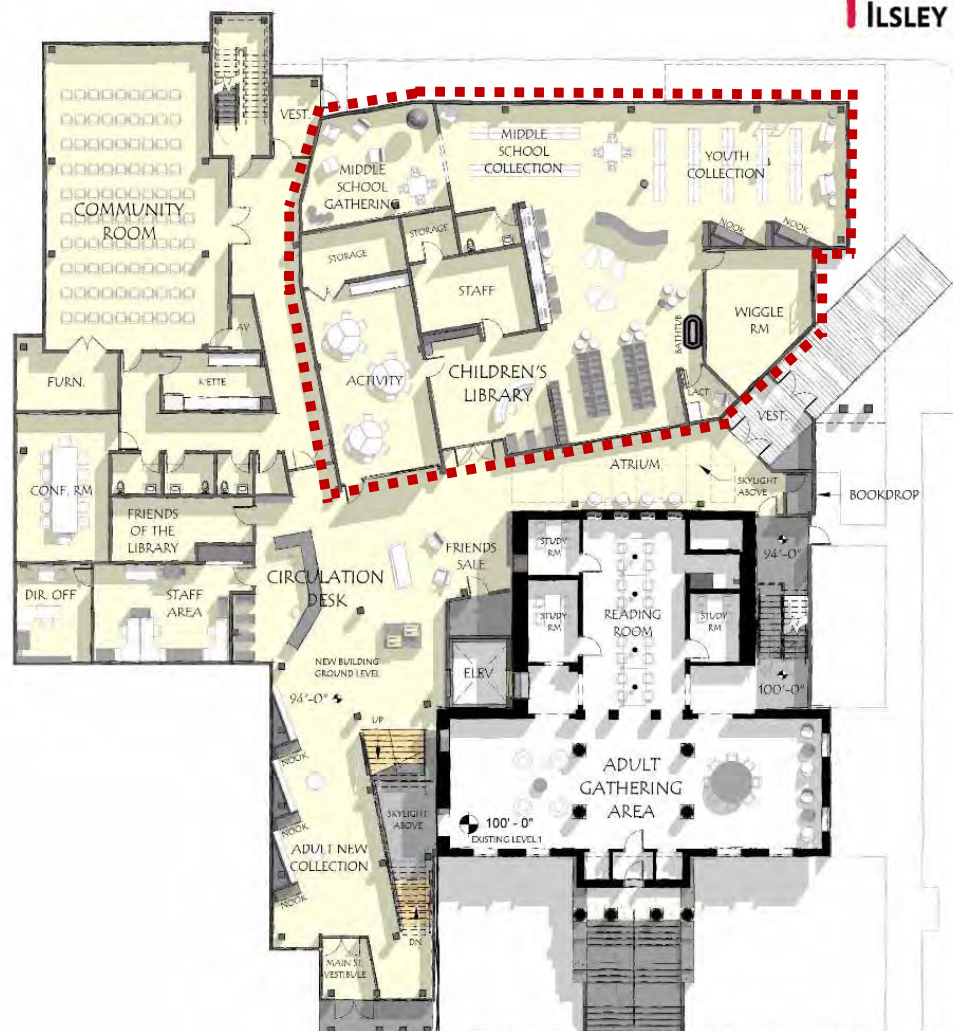
FIRST FLOOR GOALS

- Entrances that are accessible to all and easy to find
- **Community spaces that are easily accessed after hours**
- First floor children's library for easiest access with strollers and response to this heavily used part of the building
- Support spaces and control points placed to aid staff to do their best work



FIRST FLOOR GOALS

- Entrances that are accessible to all and easy to find
- Community spaces that are easily accessed after hours
- **First floor children's library for easiest access with strollers and response to this heavily used part of the building**
- Support spaces and control points placed to aid staff to do their best work



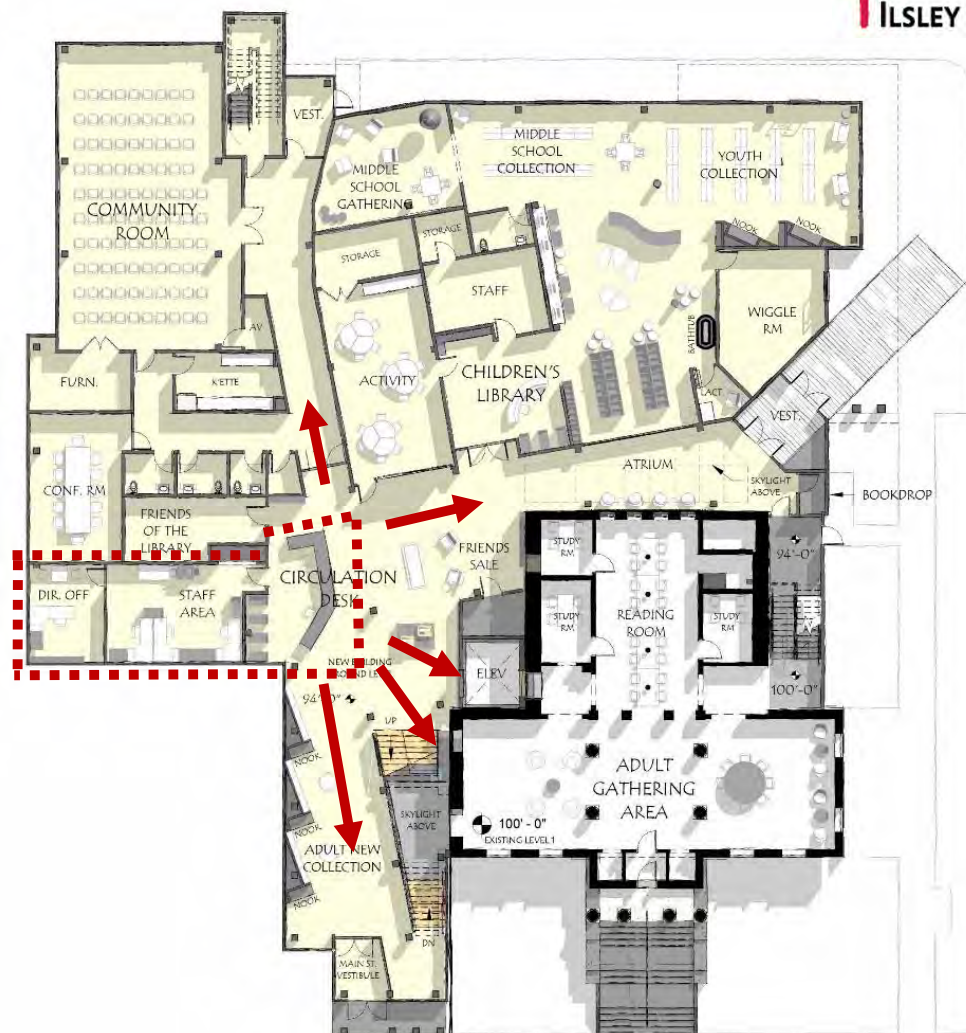
DEVELOPMENT OF "THE SECRET GARDEN" CONCEPT



LEVEL 1 - CHILDREN'S LIBRARY

FIRST FLOOR GOALS

- Entrances that are accessible to all and easy to find
- Community spaces that are easily accessed after hours
- First floor children's library for easiest access with strollers and response to this heavily used part of the building
- **Support spaces and control points placed to aid staff to do their best work**



DEVELOPMENT OF "THE SECRET GARDEN" CONCEPT



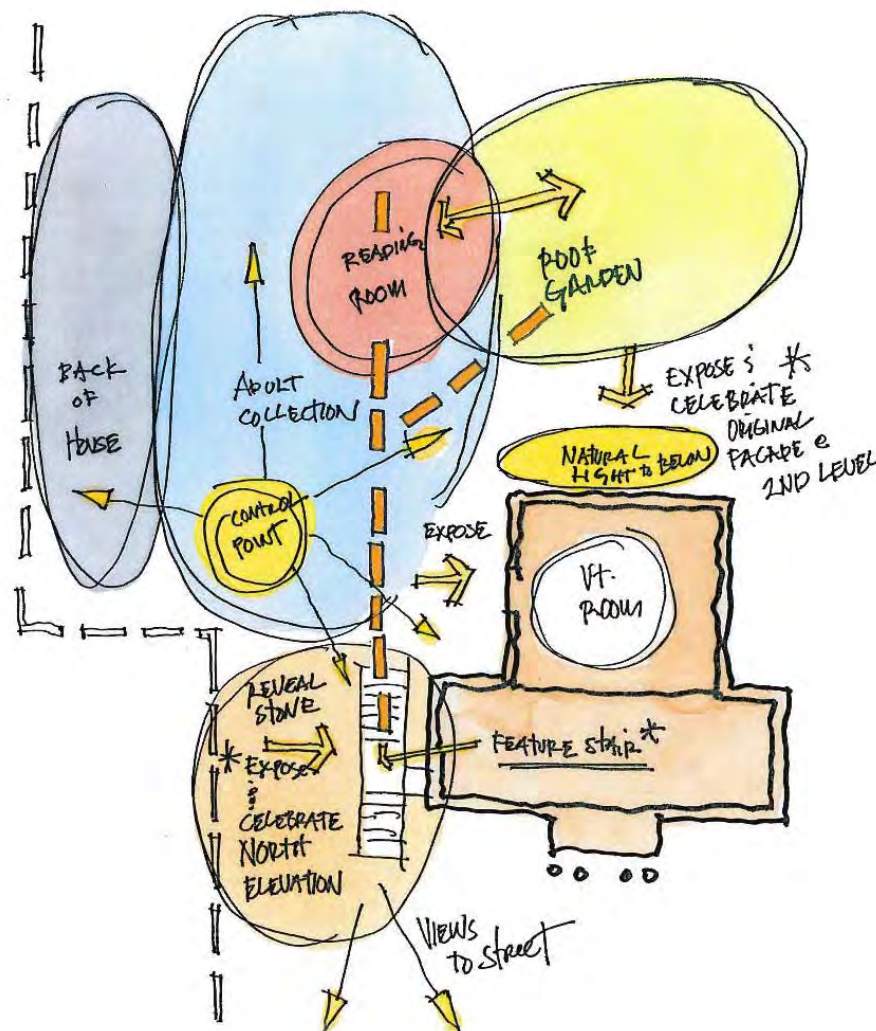
LEVEL 1 - CIRCULATION DESK LOOKING TOWARDS MAIN ST ENTRY



DEVELOPMENT OF "THE SECRET GARDEN" CONCEPT

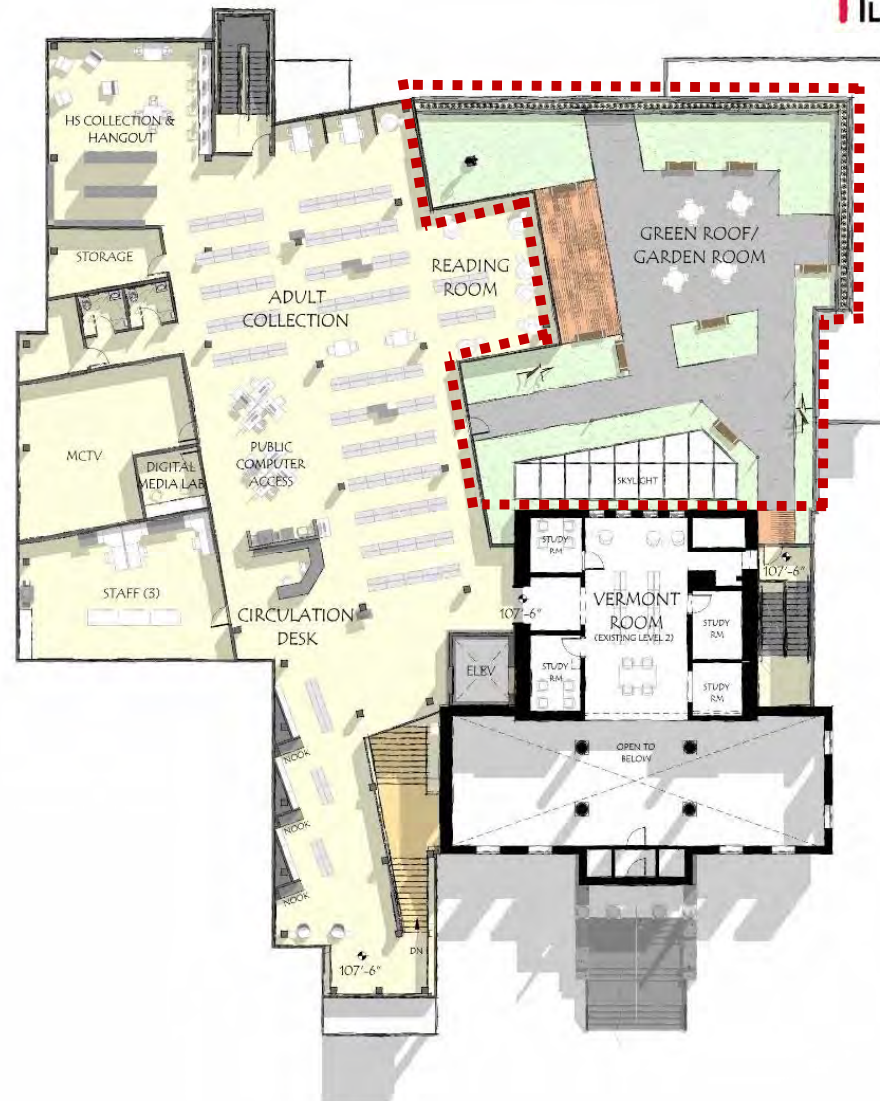
SECOND FLOOR GOALS

- Protected, peaceful, and programmable roof gardens
- Light filled reading room & adult collection spaces
- Expose 1924 library exterior to celebrate and interact with history of the building
- Support spaces and control points placed to aid staff to do their best work



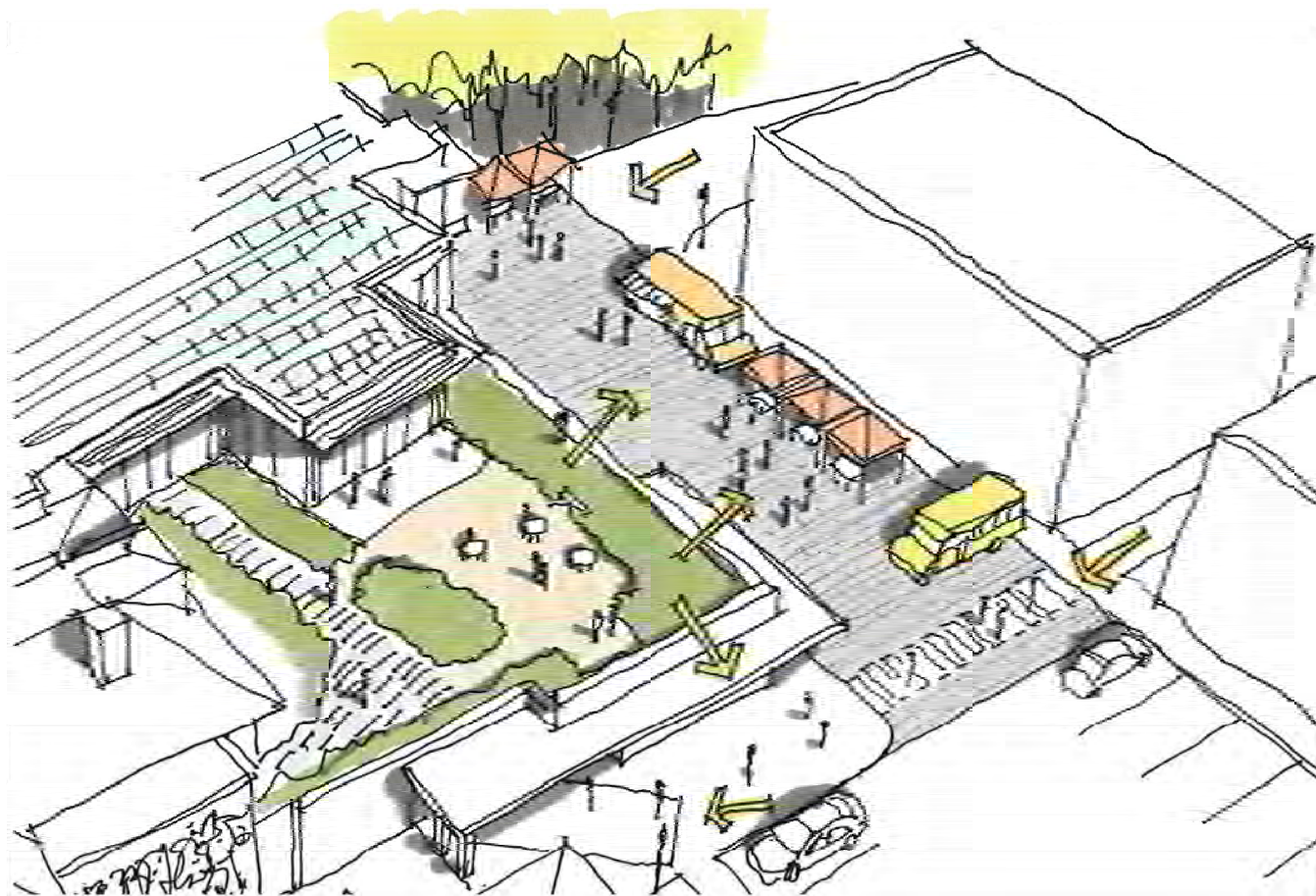
SECOND FLOOR GOALS

- **Protected, peaceful, and programmable roof gardens**
- Light filled reading room & adult collection spaces
- Expose 1924 library exterior to celebrate and interact with history of the building
- Support spaces and control points placed to aid staff to do their best work



SECOND FLOOR GOALS

- **Protected, peaceful, and programmable roof gardens**
- Light filled reading room & adult collection spaces
- Expose 1924 library exterior to celebrate and interact with history of the building
- Support spaces and control points placed to aid staff to do their best work



DEVELOPMENT OF "THE SECRET GARDEN" CONCEPT



LEVEL 2 – ROOFTOP GARDENS



SECOND FLOOR GOALS

- Protected, peaceful, and programmable roof gardens
- **Light filled reading room & adult collection spaces**
- Expose 1924 library exterior to celebrate and interact with history of the building
- Support spaces and control points placed to aid staff to do their best work



DEVELOPMENT OF "THE SECRET GARDEN" CONCEPT



LEVEL 2 – READING ROOM WITH VIEWS TO OUTDOOR GARDENS & ARTWORK



DEVELOPMENT OF "THE SECRET GARDEN" CONCEPT



LEVEL 2 – ADULT COLLECTION LOOKING TO NW MAIN ST

SECOND FLOOR GOALS

- Protected, peaceful, and programmable roof gardens
- Light filled reading room & adult collection spaces
- **Expose 1924 library exterior to celebrate and interact with history of the building**
- Support spaces and control points placed to aid staff to do their best work



SECOND FLOOR GOALS

- Protected, peaceful, and programmable roof gardens
- Light filled reading room & adult collection spaces
- Expose 1924 library exterior to celebrate and interact with history of the building
- **Support spaces and control points placed to aid staff to do their best work**



DEVELOPMENT OF "THE SECRET GARDEN" CONCEPT

ALL LEVELS

- Existing basement used for mechanical, storage and staff support spaces
- Attic to be air-sealed and insulated, no programmed space



BASEMENT FLOOR PLAN



LEVEL 1 FLOOR PLAN

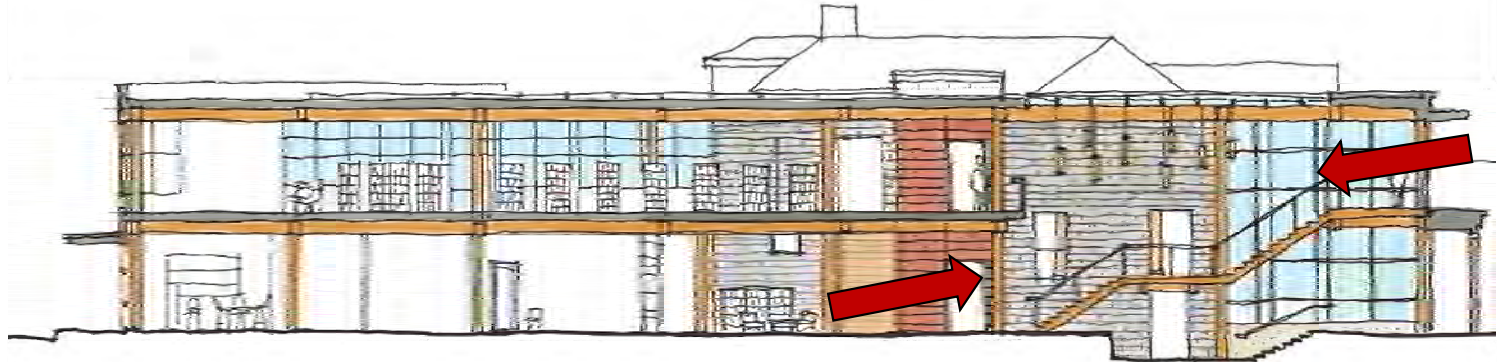


LEVEL 2 FLOOR PLAN

DEVELOPMENT OF "THE SECRET GARDEN" CONCEPT

ALL LEVELS

- New 2nd floor matches existing mezzanine
- Short transitions to existing levels



FIRST LEVEL VIEW TOWARDS STAIR



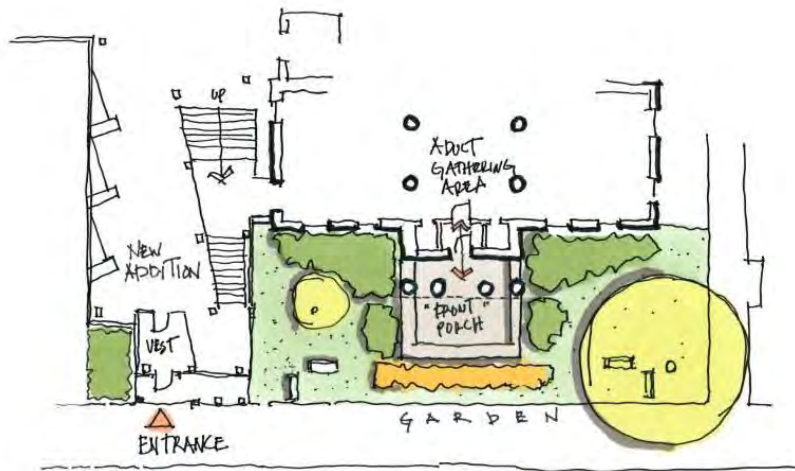
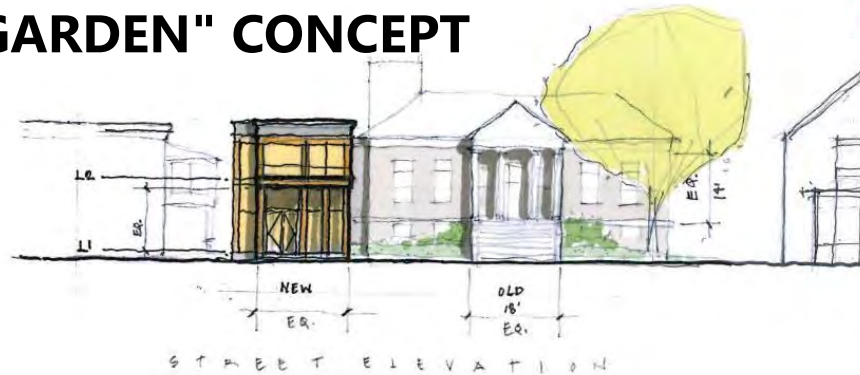
SECOND LEVEL VIEW TOWARDS STAIR



DEVELOPMENT OF "THE SECRET GARDEN" CONCEPT

MAIN STREET APPROACH

- Create a street entry to addition
- Scaled to be in keeping with historic entry
- Modern/transparent and inviting
- Continues street edge of downtown



WHERE DO WE GO FROM HERE?



THANK YOU!!

Please see our virtual walkthrough!!





**Your turn
to talk**

TIMELINE and FUNDING

- Recommendation to Selectboard - August
- Contract with design firm - September
- Begin schematic design – September/October
- Additional public input – October/November
- Align design with available funds -- ongoing
- Fundraising feasibility study – September/October
- Grant applications – Fall and ongoing
- Assess townspeople's willingness for a bond vote – fall
- Begin capital fundraising campaign -- December
- Selectboard decides on amount to bond for – January
- Bond vote ? March 2024



uē1j | 2 } 1<6t



dana.hart@ilsleypubliclibrary.org